

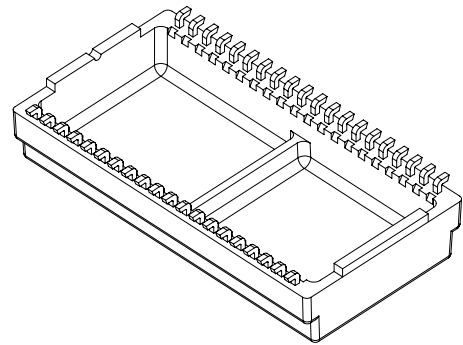
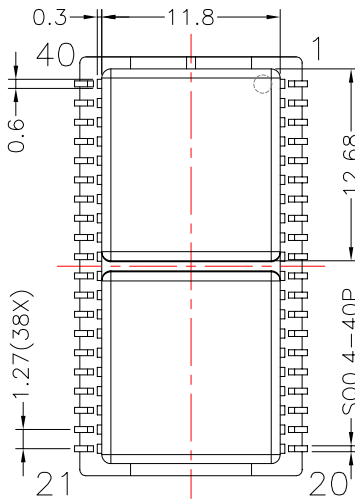
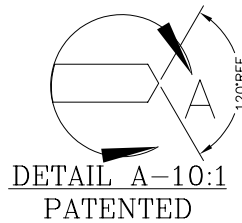
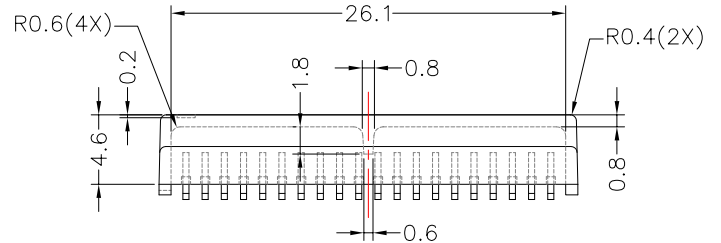
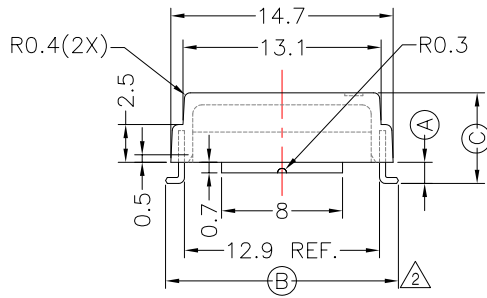
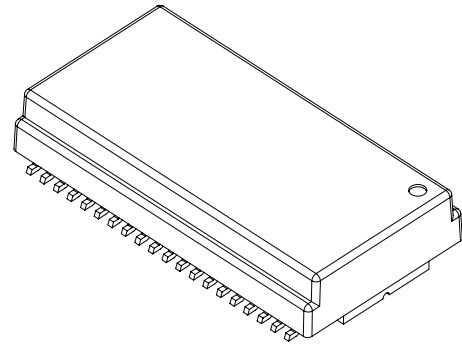
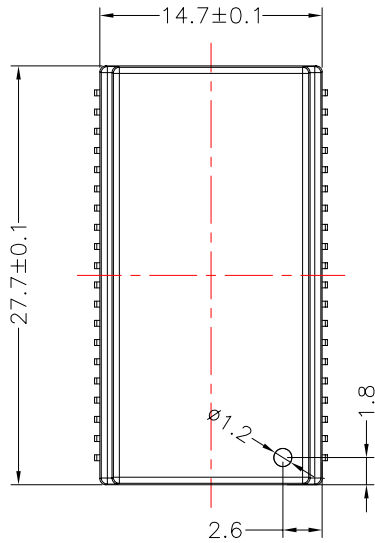


TRANSFORMER BOBBIN INDUSTRIAL CO.,LTD.

Tel : 86-769-88789999 Fax : 86-769-88789989
 http:// tbi-tw.com e-mail : tb6688@ms46.hinet.net

REVISIONS

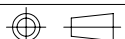
REV	SYM	DRAFTER	CHECKER	DATE
2		Y.G.HSU	W.H.HSU	02/01/07
3		Y.G.HSU	W.H.HSU	04/02/07
4		YAN.TANG	G.F.YANG	05/21/10



拉力:0.8Kg Min.

DWG NO. C0008-40P-L-1.27-B-11

PART NO.	MATERIAL (BOBBIN)	MATERIAL (TERMINAL)	TERMINAL (PLATING)	PIN ALLOCATION	NOTE
TBI-113-08021.1103	PM-9630JT	PB	Sn	ALL PIN (A)=1.4 (B)=15.4±0.2 (C)=6.0±0.15	
TBI-113-08021.1113	PM-9630JT	PB	Sn	ALL PIN (A)=1.0 (B)=15.1±0.2 (C)=5.6±0.15	
TBI-113-08021.1123	PM-9630JT	PB	Sn	ALL PIN (A)=1.13 (B)=16+0/-0.25 (C)=5.73+0.05/-0.2	



TOLERANCE: .X±0.15 .XX±0.10 .XXX±0.05

UNIT : m / m

SCALE 2 : 1

Finish: 1. PB wire Immersion Sn on terminal : Thickness:Sn plating,100,5 μm (200 μ inches) min,Base nickel 0.625 μm (25 μ inches) min.
 2. CP wire Immersion Sn on terminal : Thickness:Sn plating,100,5 μm (200 μ inches) min.
 3. Coplanarity deviation: 0.10 mm (0.004 inches) max.

REV 4