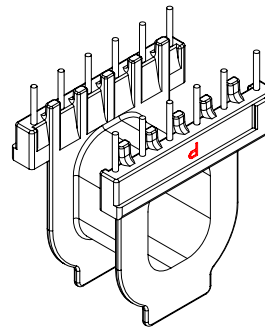
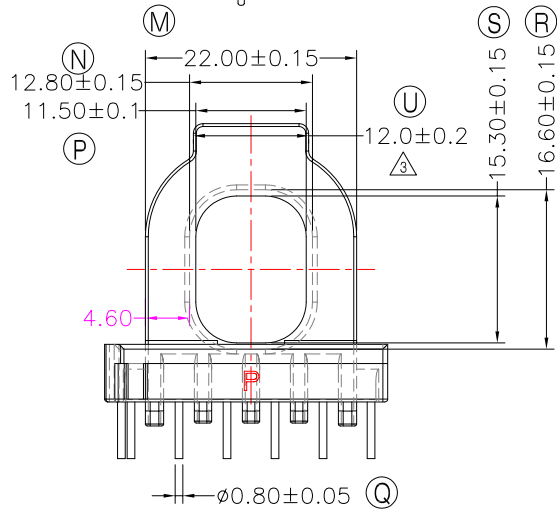
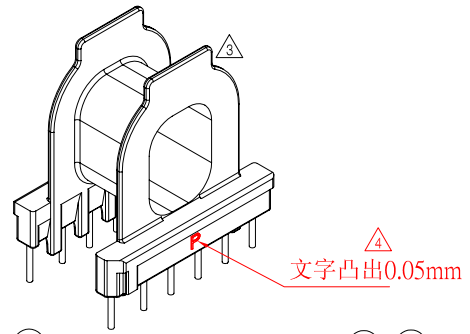
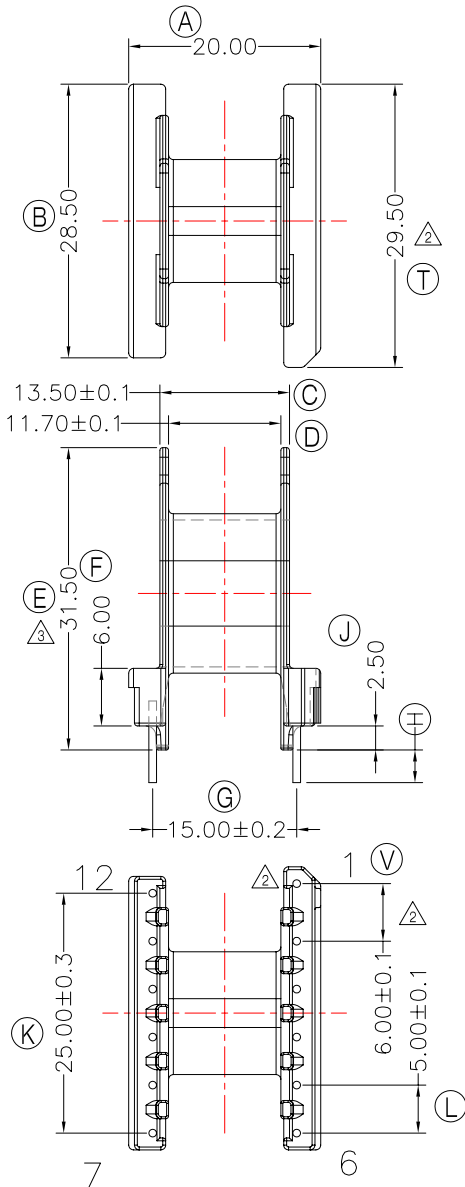




TRANSFORMER BOBBIN
INDUSTRIAL CO.,LTD.

Tel : 86-769-88789999 Fax : 86-769-88789989
http:// tbi-tw.com e-mail : tb6688@ms46.hinet.net

REVISIONS				
REV	SYM	DRAFTER	CHECKER	DATE
△2		G.F.YANG	W.H.HSU	07/03/09
△3		YAN.TANG	G.F.YANG	07/13/09
△4		X.H.GU	G.F.YANG	07/30/16



- NOTE:
1. WINDING SPACE: 11.7mm*4.6mm=53.82mm²
 2. 任意點結構強度為2.0kg MIN;
 3. 焊錫前拉力: 1.0KG MIN, 焊錫後拉力: 1.5KG MIN

DWG NO. ATP29-20.5-12P-TH-5.0-A-12

PART NO.	MATERIAL (BOBBIN)	MATERIAL (TERMINAL)	TERMINAL (PLATING)	PIN ALLOCATION	NOTE
TBI-238-18011.1206	PM-9820	CP WIRE	Sn	ALL PIN (H)=3.4±0.2	S
TBI-238-18011.1216	PM-9820	CP WIRE	Sn	CUT PIN #2,3,4,5,8,9,10,11 (H)=3.4±0.2	H
TBI-238-18011.1226	PM-9820	CP WIRE	Sn	CUT PIN # 2,3,4,5,6,8,9,10,11 (H)=3.4±0.2	
TBI-238-18011.1236	PM-9820	CP WIRE	Sn	CUT PIN #1,4 (H)=3.4±0.2	
TBI-238-18011.1246	PM-9820	CP WIRE	Sn	CUT PIN #1,4,12 (H)=3.4±0.2	
TBI-238-18011.1256	PM-9820	CP WIRE	Sn	CUT PIN #3,4,6,7,8,9,10,11 (H)=5.0±0.5	
TBI-238-18011.1266	PM-9820	CP WIRE	Sn	CUT PIN #3,4,6,7,8,9,10,11 (H)=3.7±0.2	
TBI-238-18011.1276	PM-9820	CP WIRE	Sn	CUT PIN #1,4,12 (H)=5.0±0.3	
TBI-238-18011.1286	PM-9820	CP WIRE	Sn	CUT PIN #PIN3,4,6,7,8,9,10 (H)=3.7±0.2	
TBI-238-18011.1296	PM-9820	CP WIRE	Sn	CUT PIN #PIN1,5,8,9,12 (H)=3.7±0.2	
TBI-238-18011.12A6	PM-9820	CP WIRE	Sn	CUT PIN #PIN2,3,6,7,8,9,10,11 (H)=3.7±0.2	
TBI-238-18011.12B6	PM-9820	CP WIRE	Sn	CUT PIN #1,5,8,9,12 (H)=3.4±0.2	
TBI-238-18011.12C6	PM-9820	CP WIRE	Sn	CUT PIN #4,9,10 (H)=3.4±0.2	

TOLERANCE: 0<L<=4:±0.1 4<L<=16:±0.2 16<L<=63:±0.3

UNIT : m / m

SCALE 1 : 1

Finish: 1. PB wire Immersion Sn on terminal : Thickness:Sn plating,100,5 μm (200 μ inches) min.Base nickel 0.625 μm (25 μ inches) min.
2. CP wire Immersion Sn on terminal : Thickness:Sn plating,100,5 μm (200 μ inches) min.
3. Coplanarity deviation: 0.10 mm (0.004 inches) max.

REV 4