

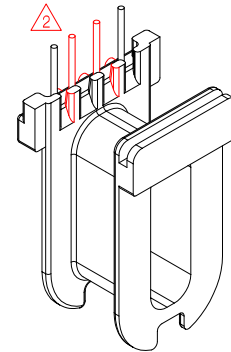
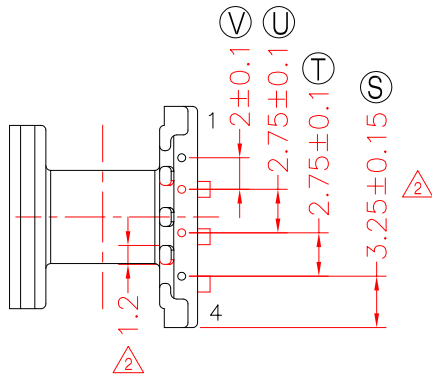
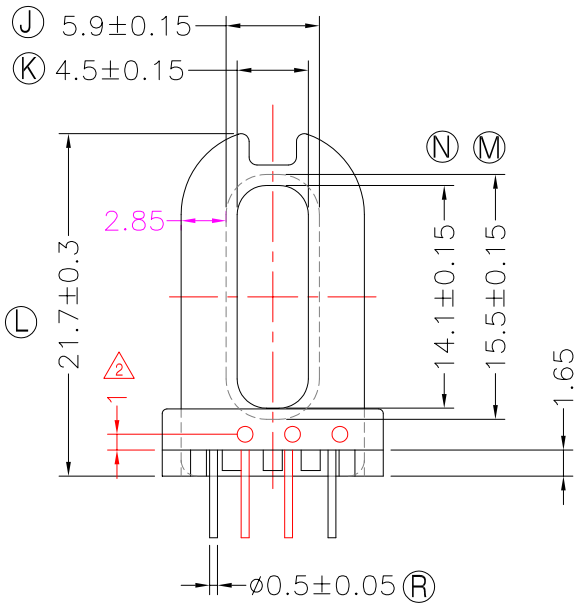
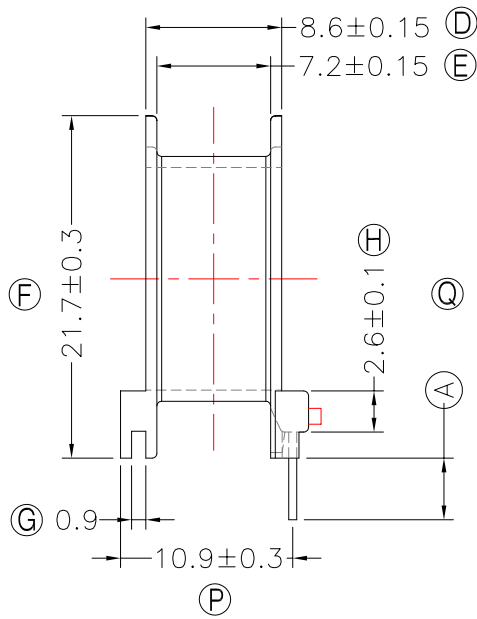
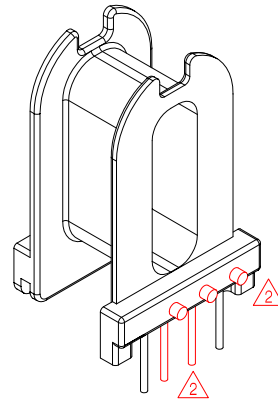
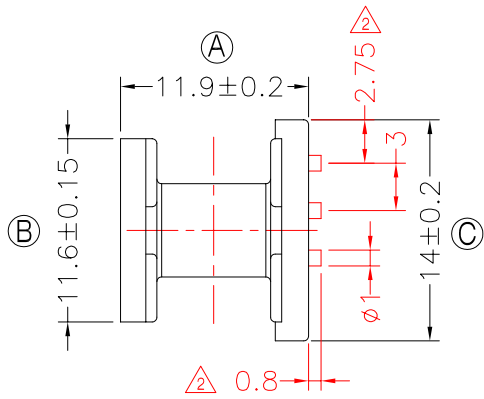


**TRANSFORMER BOBBIN
INDUSTRIAL CO.,LTD.**

Tel : 86-769-88789999 Fax : 86-769-88789989
http:// tbi-tw.com e-mail : tb6688@ms46.hinet.net

REVISIONS

REV	SYM	DRAFTER	CHECKER	DATE
①		X.H.GU	G.F.YANG	09/24/12
②		X.H.GU	G.F.YANG	11/09/12
③				



NOTE:

WINDING SPACE: 7.20mm*2.85mm=20.52 mm²

DWG NO.	ATP15-12A-4P-TH-H-11				NOTE	
PART NO.	MATERIAL (BOBBIN)	MATERIAL (TERMINAL)	TERMINAL (PLATING)	PIN ALLOCATION	NOTE	
TBI-238-27081.1106	PM-9630	CP WIRE	Sn	ALL PIN (A)=3.9±0.3		S
TBI-238-27081.1116	PM-9630	CP WIRE	Sn	ALL PIN (A)=6.0±0.3		
TBI-238-27081.1126	PM-9630	CP WIRE	Sn	CUT PIN#1,3 (A)=3.3±0.3		

	TOLERANCE: 0<L<=4:±0.1 4<L<=16:±0.2 16<L<=63:±0.3	UNIT : m / m	SCALE 1 : 1
Finish:	1. PB wire Immersion Sn on terminal : Thickness:Sn plating,100,5 μm (200 μ inches) min,Base nickel 0.625 μm (25 μ inches) min. 2. CP wire Immersion Sn on terminal : Thickness:Sn plating,100,5 μm (200 μ inches) min. 3. Coplanarity deviation: 0.10 mm (0.004 inches) max.		REV 2