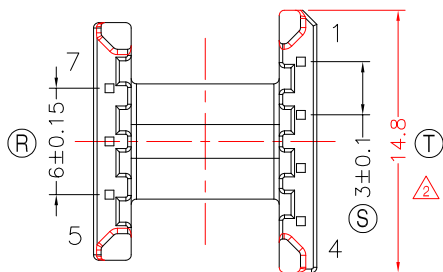
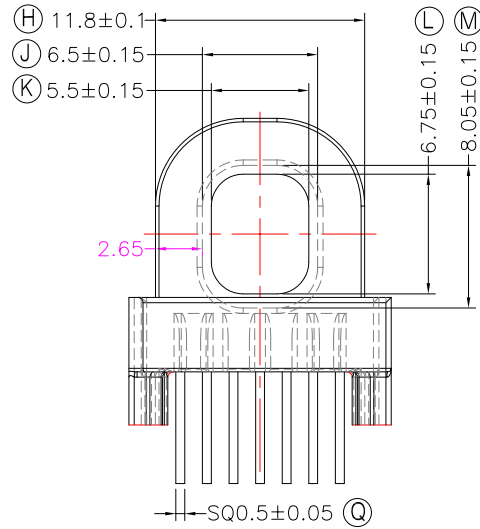
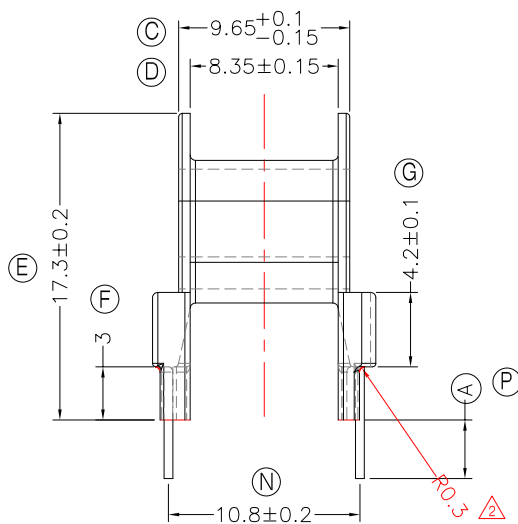
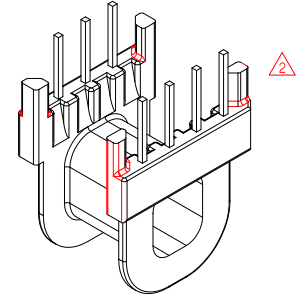
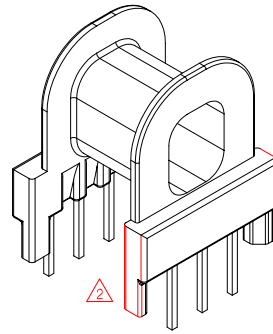
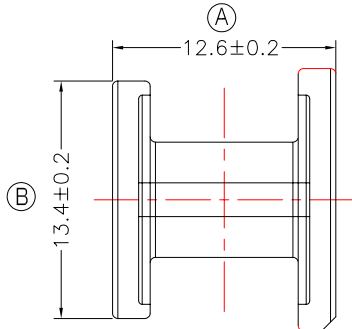




TRANSFORMER BOBBIN INDUSTRIAL CO.,LTD.

Tel : 86-769-88789999 Fax : 86-769-88789989
 http:// tbi-tw.com e-mail : tb6688@ms46.hinet.net

REVISIONS				
REV	SYM	DRAFTER	CHECKER	DATE
△1		X.H.GU	G.F.YANG	06/02/12
△2		F.LU	G.F.YANG	01/31/13
△3				



NOTE:

1. 焊錫前拉力:1.0KG MIN, 焊錫後拉力:1.5KG MIN;
2. 任意一點強度須1.5kg MIN;
3. 耐壓4.0Kv /1.5mA 60S;
4. 焊錫溫度:450°±10° 3SEC
5. WINDING SPACE:8.35mm*2.65mm=22.13 mm²

DWG NO. ATP15-13-7P-TH-F-11

PART NO.	MATERIAL (BOBBIN)	MATERIAL (TERMINAL)	TERMINAL (PLATING)	PIN ALLOCATION	NOTE
TBI-238-27061.1106	PM-9630	CP WIRE	Sn	ALL PIN (A)=3.3±0.3	S
TBI-238-27061.1116	PM-9630	CP WIRE	Sn	NO PIN#1,2,5,6,7 (A)=3.3±0.3	H
TBI-238-27061.1126	PM-9630	CP WIRE	Sn	NO PIN#2,3,5,6 (A)=3.5±0.3	
TBI-238-27061.1136	PM-9630	CP WIRE	Sn	NO PIN#1,3,5,6,7 (A)=3.3±0.3	
TBI-238-27061.1146	PM-9630	CP WIRE	Sn	NO PIN#1,2,7 (A)=3.3±0.3	
TBI-238-27061.1156	PM-9630	CP WIRE	Sn	NO PIN#1,3,5,6,7 (A)=5.0±0.5	暫無刀模
TBI-238-27061.1166	PM-9630	CP WIRE	Sn	NO PIN#1,2,5,7 (A)=3.3±0.3	
TBI-238-27061.1176	PM-9630	CP WIRE	Sn	NO PIN#1,2,6,7 (A)=3.3±0.3	
TBI-238-27061.1186	PM-9630	CP WIRE	Sn	NO PIN#1,2,3,5 (A)=3.3±0.3	
TBI-238-27061.1196	PM-9630	CP WIRE	Sn	NO PIN#1,3,6,7 (A)=3.3±0.3	
TBI-238-27061.11A6	PM-9630	CP WIRE	Sn	NO PIN#1,3,6,7 (A)=5.0±0.5	暫無刀模
TBI-238-27061.11B6	PM-9630	CP WIRE	Sn	NO PIN#1,2,3,5 (A)=5.0±0.5	暫無刀模
TBI-238-27061.11C6	PM-9630	CP WIRE	Sn	NO PIN#2 (A)=3.5±0.3	
TBI-238-27061.11D6	PM-9630	CP WIRE	Sn	NO PIN#3,4,5,7 (A)=3.3±0.3	

TOLERANCE: 0<L<=4:±0.1 4<L<=16:±0.2 16<L<=63:±0.3 UNIT : m / m SCALE 1 : 1

Finish: 1. PB wire Immersion Sn on terminal : Thickness:Sn plating,100,5 μm (200 μ inches) min, Base nickel 0.625 μm (25 μ inches) min.
 2. CP wire Immersion Sn on terminal : Thickness:Sn plating,100,5 μm (200 μ inches) min.
 3. Coplanarity deviation: 0.10 mm (0.004 inches) max.

REV 2