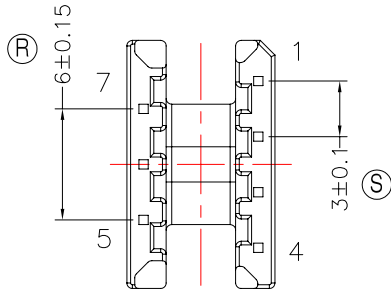
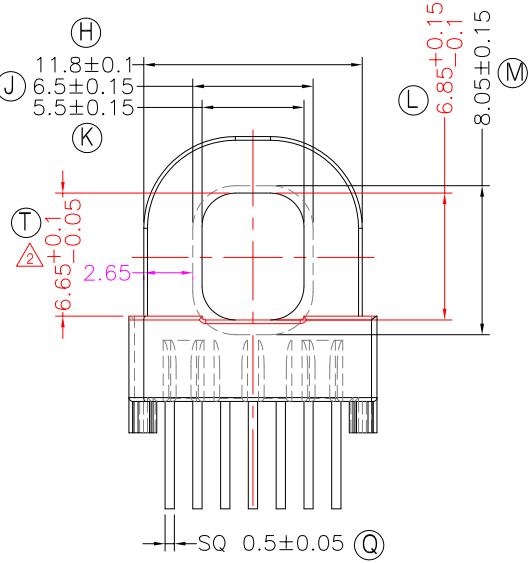
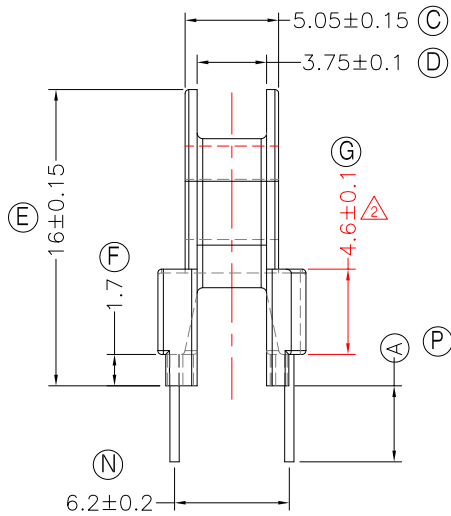
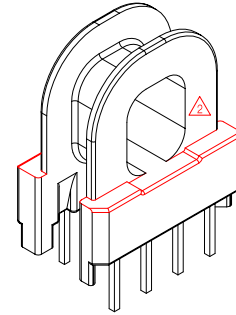
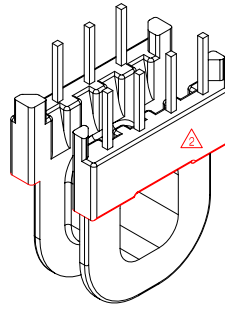
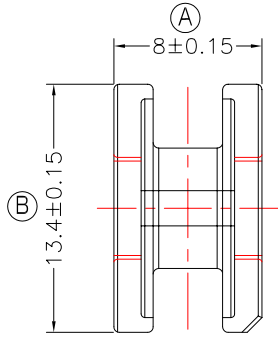




TRANSFORMER BOBBIN
INDUSTRIAL CO.,LTD.

Tel : 86-769-88789999 Fax : 86-769-88789989
http:// tbi-tw.com e-mail : tb6688@ms46.hinet.net

REVISIONS				
REV	SYM	DRAFTER	CHECKER	DATE
△1		X.H.GU	G.F.YANG	10/08/10
△2		G.F.YANG	W.H.HSU	06/03/15
△3				



NOTE:

- 1.CORE TYPE :ATP15/8.4
- 2.任意一點強度須1.5kg MIN;
- 3.耐壓4.0Kv /1.5mA 60S;
- 4.焊錫溫度:450°±10° 3SEC
- 5.焊錫前拉力:1.0KG MIN,焊錫後拉力:1.5KG MIN;
- 6.WINDING SPACE:3.75mm*2.65mm=9.9375 mm²

DWG NO. ATP15-8.3-7P-TH-C-11

PART NO.	MATERIAL (BOBBIN)	MATERIAL (TERMINAL)	TERMINAL (PLATING)	PIN ALLOCATION	NOTE
TBI-238-27031.1106	PM-9630	CP WIRE	Sn	ALL PIN (A)=4.1±0.3	S
TBI-238-27031.1116	PM-9630	CP WIRE	Sn	CUT PIN#1,4,5,6,7 (A)=3.0±0.3	H
TBI-238-27031.1126	PM-9630	CP WIRE	Sn	ALL PIN (A)=3.0±0.3	
TBI-238-27031.1136	PM-9630	CP WIRE	Sn	CUT PIN#2,3,7 (A)=3.3±0.3	
TBI-238-27031.1146	PM-9630	CP WIRE	Sn	ALL PIN (A)=3.3±0.3	
TBI-238-27031.1156	PM-9630	CP WIRE	Sn	CUT PIN#2,3,6,7 (A)=3.3±0.3	
TBI-238-27031.1166	PM-9630	CP WIRE	Sn	ALL PIN (A)=2.7±0.2	
TBI-238-27031.1176	PM-9630	CP WIRE	Sn	CUT PIN#1,2,3,6,7, (A)=3.3±0.2	
TBI-238-27031.1186	PM-9630	CP WIRE	Sn	CUT PIN#1,3,5,6,7, (A)=2.7±0.2	
TBI-238-27031.1196	PM-9630	CP WIRE	Sn	CUT PIN#1,2,6,7 (A)=3.3±0.2	
TBI-238-27031.11A6	PM-9630	CP WIRE	Sn	CUT PIN#3,4,5, (A)=3.3±0.2	
TBI-238-27031.11B6	PM-9630	CP WIRE	Sn	CUT PIN#1,2,7 (A)=3.3±0.2	
TBI-238-27031.11C6	PM-9630	CP WIRE	Sn	CUT PIN#1,2,3,6,7, (A)=3.5±0.2	

TOLERANCE: 0<L<=4:±0.1 4<L<=16:±0.2 16<L<=63:±0.3 UNIT : m / m SCALE 1 : 1

Finish: 1. PB wire Immersion Sn on terminal : Thickness:Sn plating,100,5 μm (200 μ inches) min.Base nickel 0.625 μm (25 μ inches) min.
2. CP wire Immersion Sn on terminal : Thickness:Sn plating,100,5 μm (200 μ inches) min.
3. Coplanarity deviation: 0.10 mm (0.004 inches)max.

REV 2