

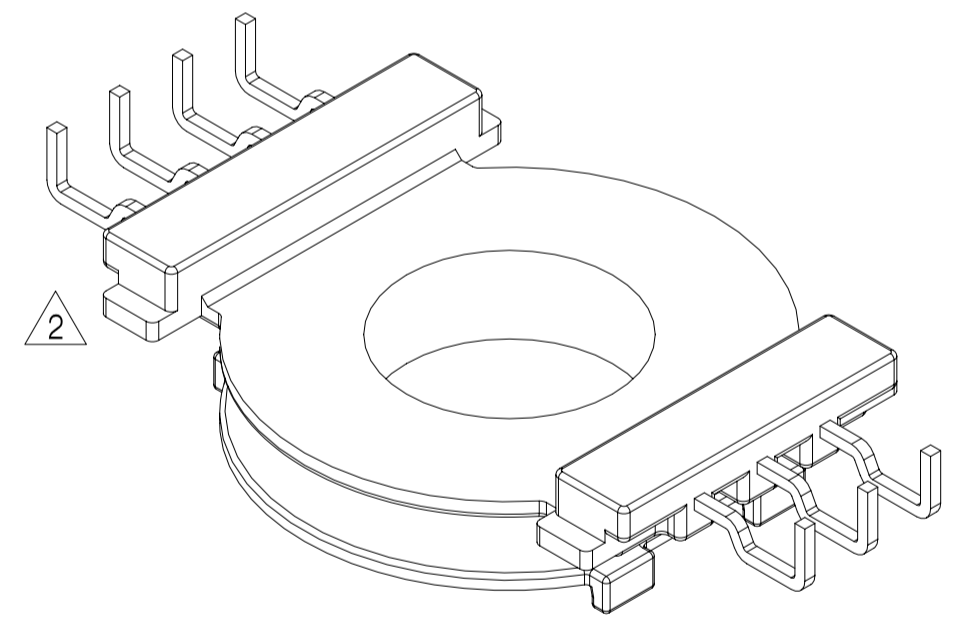
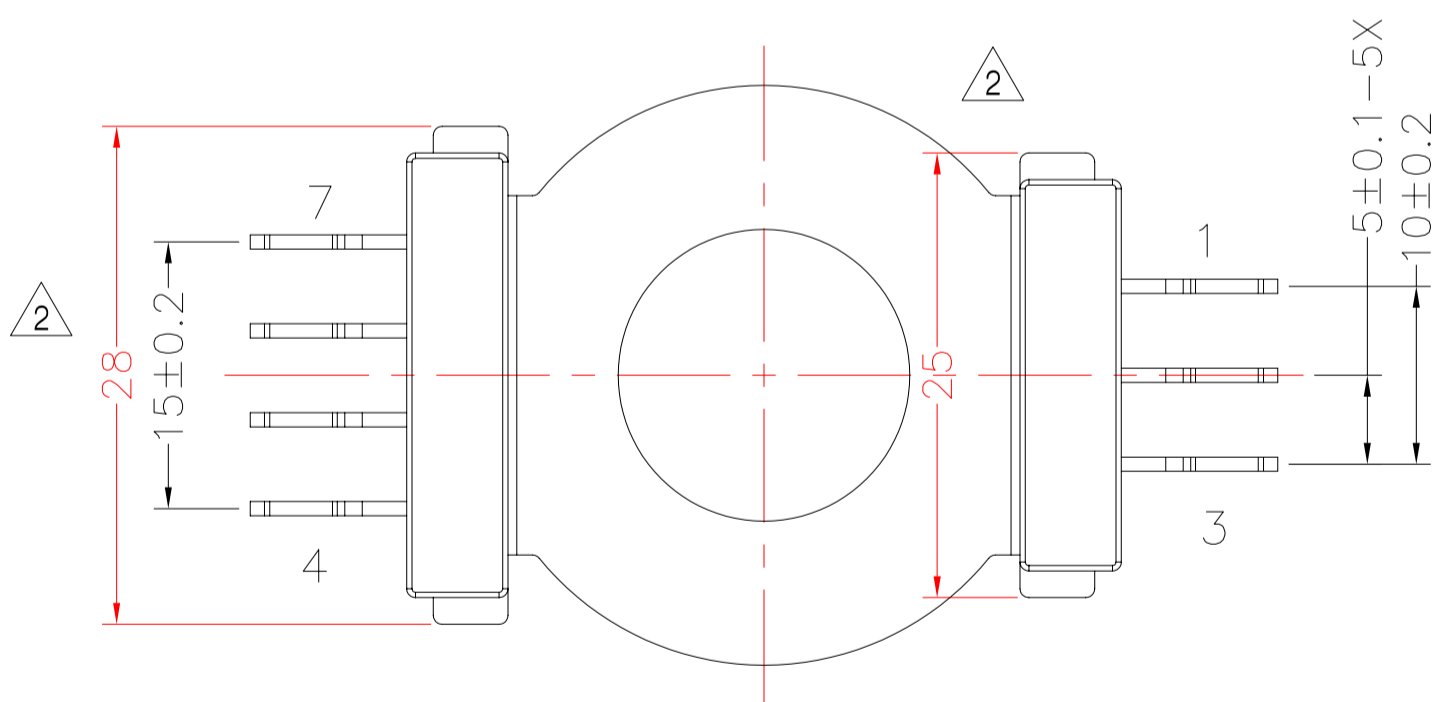
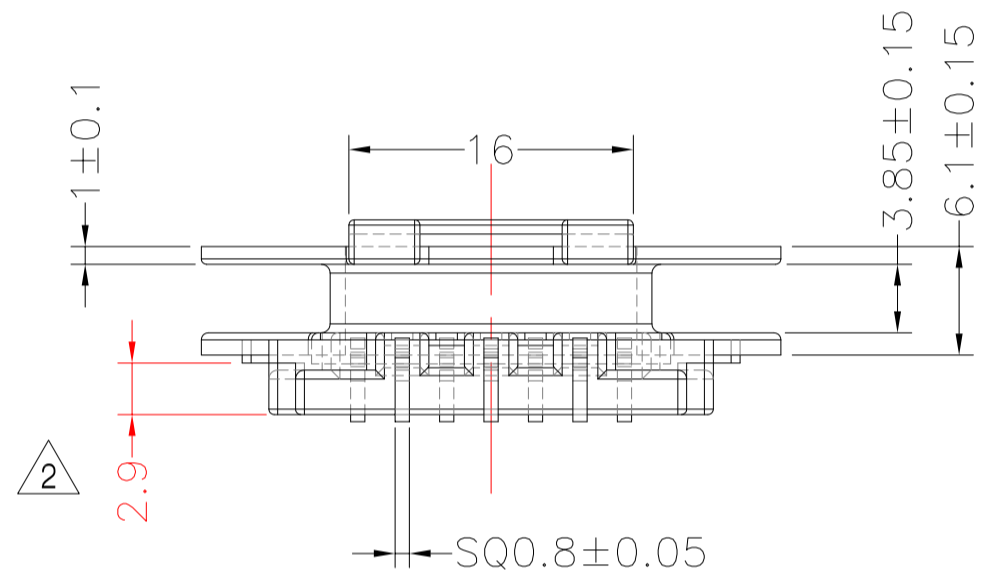
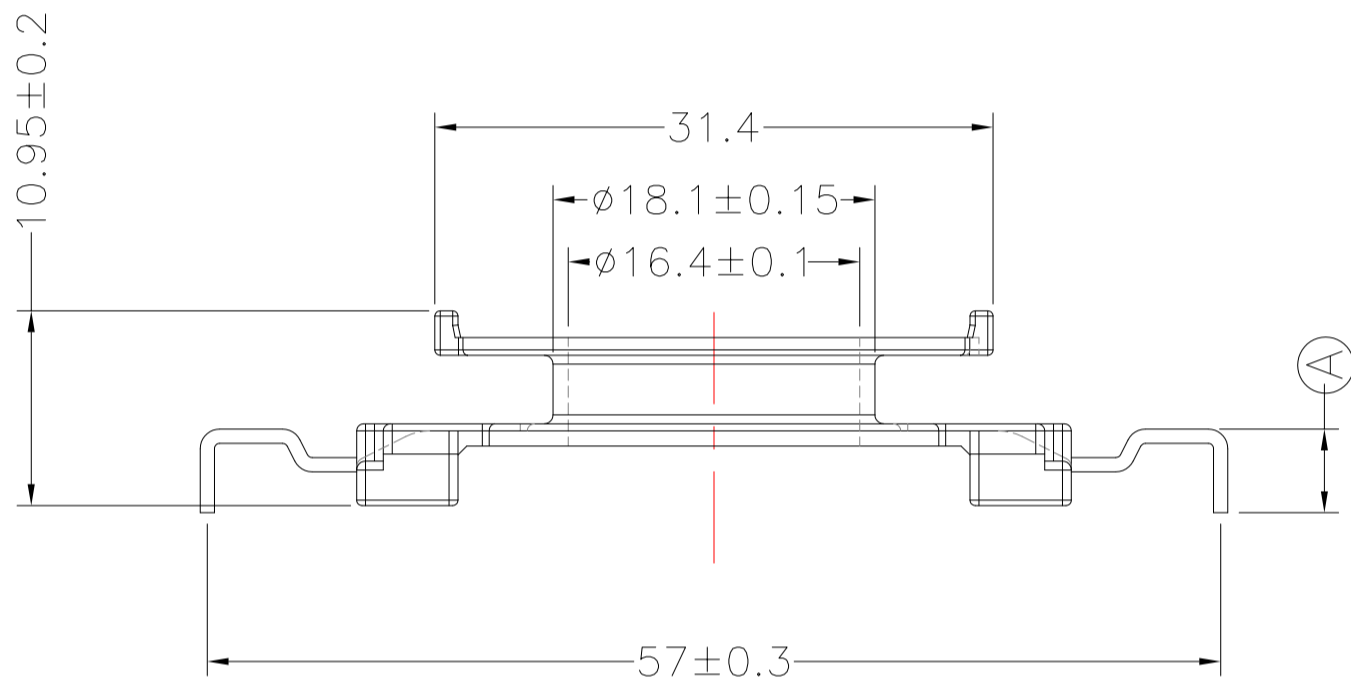
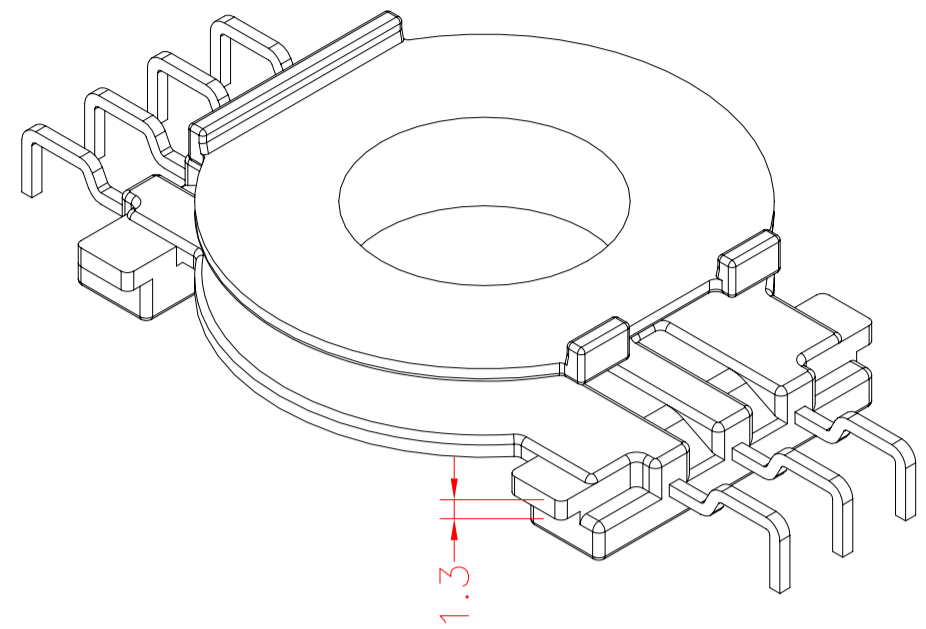
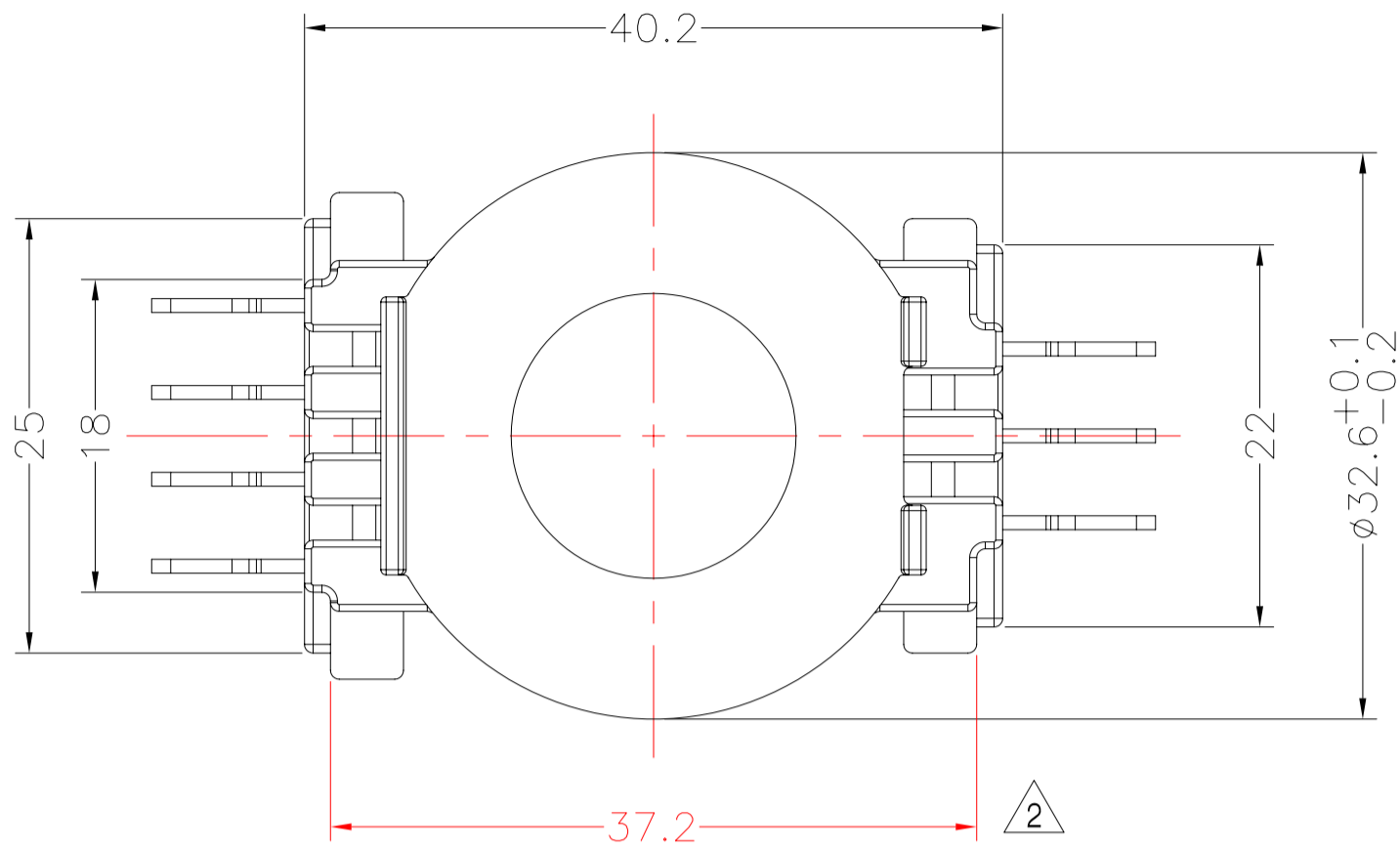


TRANSFORMER BOBBIN  
INDUSTRIAL CO.,LTD.

Tel : 86-769-88789999 Fax : 86-769-88789989  
http:// tbi-tw.com e-mail : tb6688@ms46.hinet.net

REVISIONS

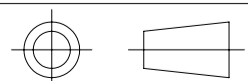
REV	SYM	DRAFTER	CHECKER	DATE
1		YAN.TANG	G.F.YANG	02/03/10
2		X.H.GU	G.F.YANG	04/23/10
3				



焊錫前拉力:1.5KG MIN  
焊錫後拉力:2.04KG MIN  
任意一點強度須3.0kg MIN;

DWG NO. CC40-12.6A-7P-THT-5.0-1B-12

PART NO.	MATERIAL (BOBBIN)	MATERIAL (TERMINAL)	TERMINAL (PLATING)	PIN ALLOCATION	NOTE
TBI-239-01121.1206	PM-9820	CP WIRE	Sn	ALL PIN (A) = 4.7±0.2	S
TBI-239-01121.1216	PM-9820	CP WIRE	Sn	ALL PIN (A) = 4.5±0.2	H



TOLERANCE: 0<L<=4:±0.1 4<L<=16:±0.2 16<L<=63:±0.3

UNIT : m / m

SCALE 1 : 1

Finish: 1. PB wire Immersion Sn on terminal : Thickness:Sn plating,100,5 μm (200 μ inches) min,Base nickel 0.625 μm (25 μ inches) min.  
2. CP wire Immersion Sn on terminal : Thickness:Sn plating,100,5 μm (200 μ inches) min.  
3. Coplanarity deviation: 0.10 mm (0.004 inches )max.

REV 2