

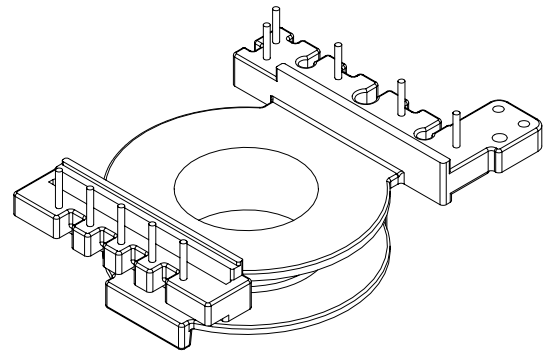
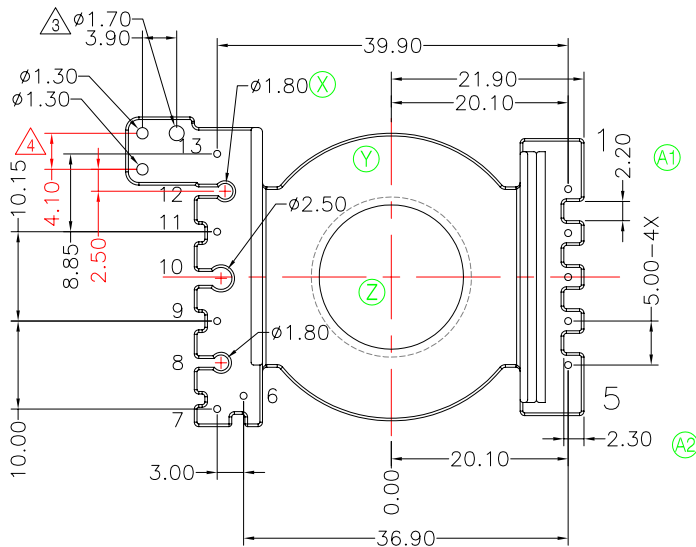
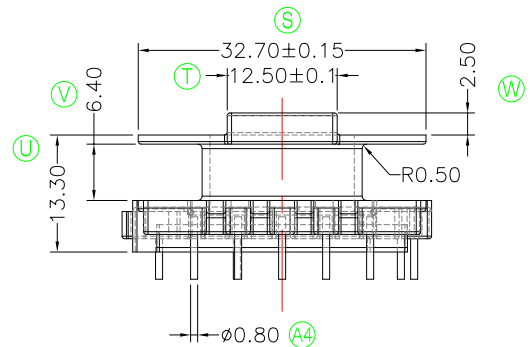
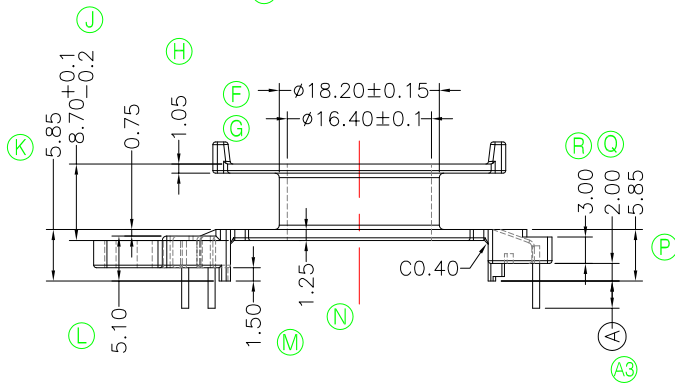
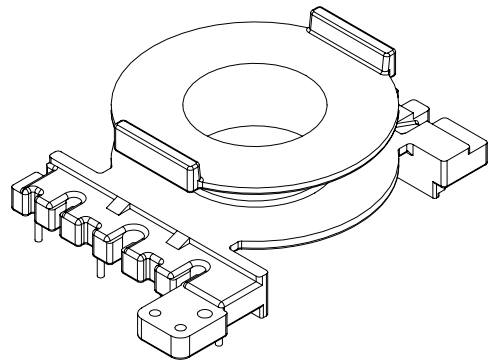
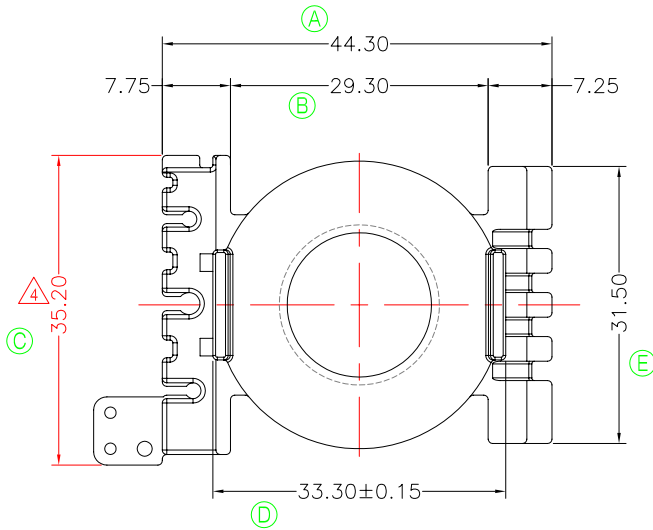


**TRANSFORMER BOBBIN
INDUSTRIAL CO.,LTD.**

Tel : 86-769-88789999 Fax : 86-769-88789999
http:// tbi-tw.com e-mail : tb6688@ms46.hinet.net

REVISIONS

REV	SYM	DRAFTER	CHECKER	DATE
△2		G.F.YANG	W.H.HSU	06/21/10
△3		G.F.YANG	W.H.HSU	07/28/10
△4		G.F.YANG	W.H.HSU	07/28/10



焊錫前拉力:1.0KG MIN
焊錫後拉力:1.5KG MIN
任意一點強度須3.0kg MIN;
WINDING SPACE:7.25mm*6.4mm=46.4 mm²

DWG NO. CC40-16.5-13P-TH-F-15

PART NO.	MATERIAL (BOBBIN)	MATERIAL (TERMINAL)	TERMINAL (PLATING)	PIN ALLOCATION	NOTE
TBI-239-01061.1506	CPJ-8800	CP WIRE	Sn	ALL PIN (A)=3.3±0.2 △3	S
TBI-239-01061.1516	CPJ-8800	CP WIRE	Sn	CUT PIN #6,13 (A)=5.0±0.2	H
TBI-239-01061.1526	CPJ-8800	CP WIRE	Sn	CUT PIN #6,13 (A)=3.3±0.2 △B	
TBI-239-01061.1536	CPJ-8800	CP WIRE	Sn	CUT PIN #6,13 (A)=4.0±0.2	

TOLERANCE: 0<L<=4:±0.1 4<L<=16:±0.2 16<L<=50:±0.3 PIN PITCH±0.2

UNIT : m / m

SCALE 1 : 1

Finish: 1. PB wire Immersion Sn on terminal : Thickness:Sn plating,100,5 μm (200 μ inches) min,Base nickel 0.625 μm (25 μ inches) min.
2. CP wire Immersion Sn on terminal : Thickness:Sn plating,100,5 μm (200 μ inches) min.
3. Coplanarity deviation: 0.10 mm (0.004 inches) max.

REV 4