

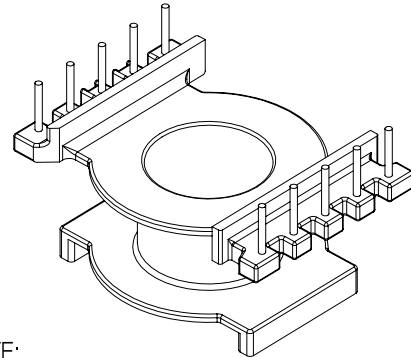
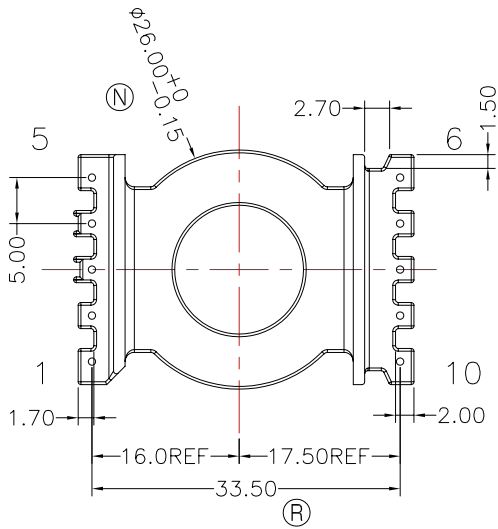
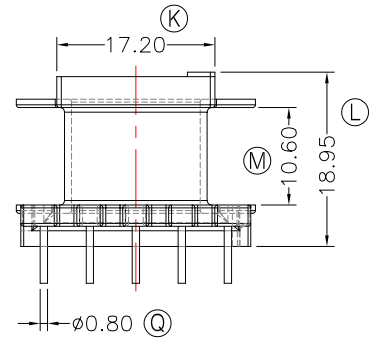
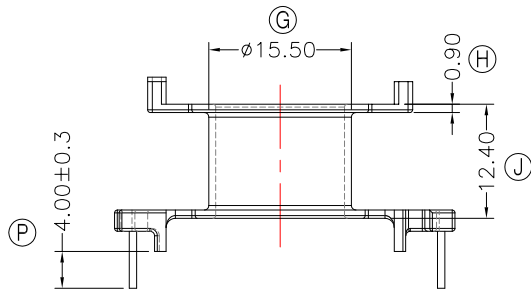
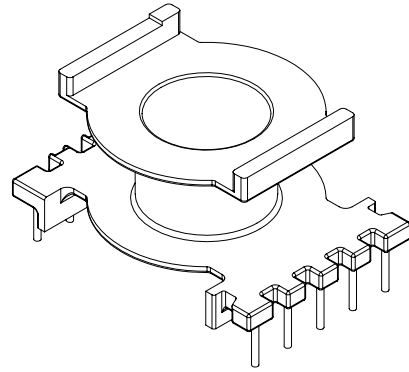
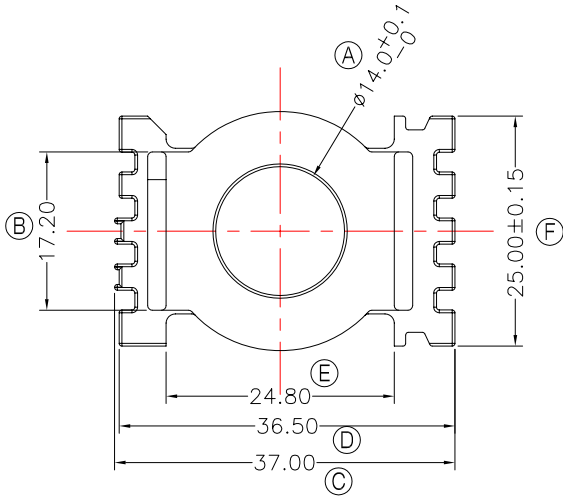


**TRANSFORMER BOBBIN
INDUSTRIAL CO.,LTD.**

Tel : 86-769-88789999 Fax : 86-769-88789989
http://tbi-tw.com e-mail : tb6688@ms46.hinet.net

REVISIONS

REV	SYM	DRAFTER	CHECKER	DATE
①		F.LU	G.F.YANG	03/25/13
②				
③				



NOTE:

- 1.WINDING SPACE: $5.25\text{mm} \times 10.6\text{mm} = 55.65 \text{mm}^2$
- 2.焊錫前拉力:1.0KG MIN,焊錫後拉力:1.5KG MIN;
- 3.任意一點強度須2.0kg MIN;

DWG NO.	CC3319-10P-TH-5.0-D6-12			PIN ALLOCATION	NOTE
PART NO.	MATERIAL (BOBBIN)	MATERIAL (TERMINAL)	TERMINAL (PLATING)		
TBI-239-04461.1206	PM-9820	CP WIRE	Sn	ALL PIN	S
					H

TOLERANCE: $0 < L \leq 4: \pm 0.1$ $4 < L \leq 16: \pm 0.2$ $16 < L \leq 63: \pm 0.3$ UNIT : m / m SCALE 1 : 1

Finish: 1. PB wire Immersion Sn on terminal : Thickness:Sn plating,100,5 μm (200 μinches) min,Base nickel 0.625 μm (25 μinches) min.
2. CP wire Immersion Sn on terminal : Thickness:Sn plating,100,5 μm (200 μinches) min.
3. Coplanarity deviation: 0.10 mm (0.004 inches) max.

REV 1