

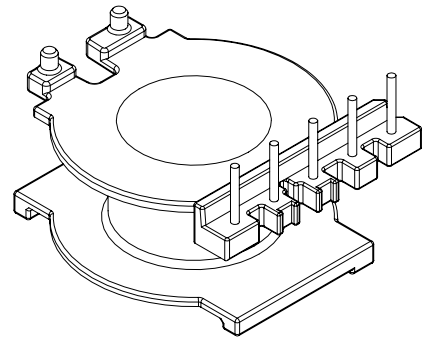
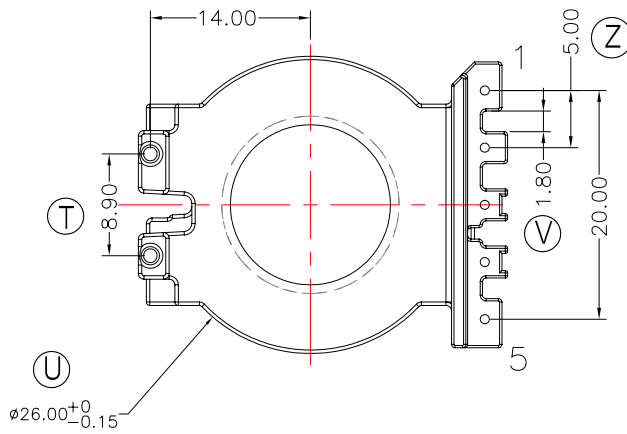
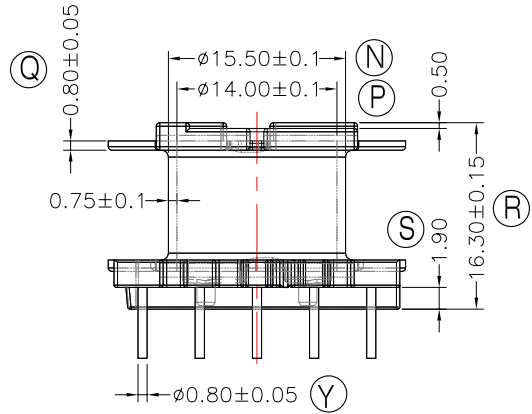
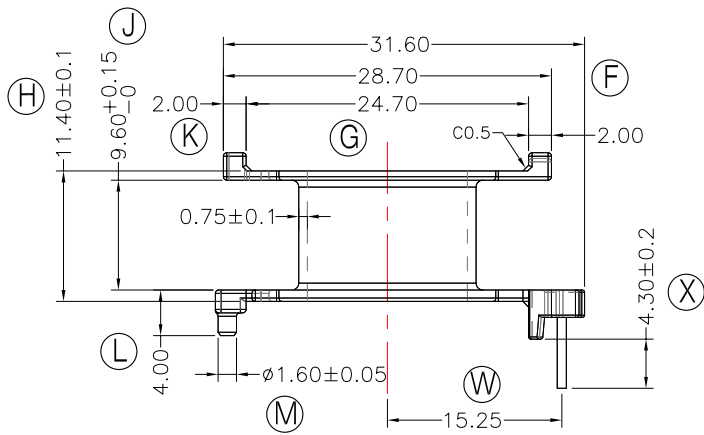
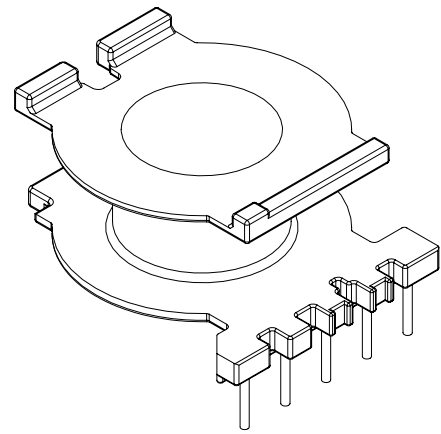
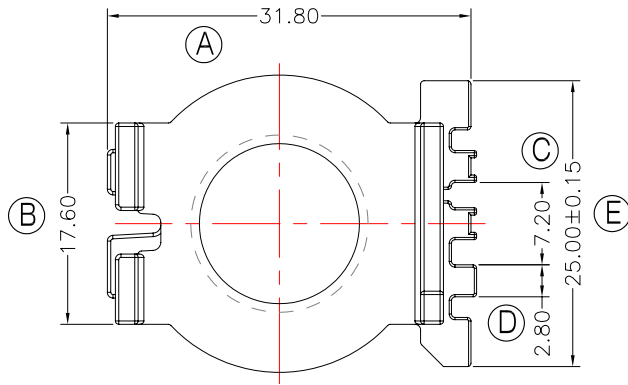


TRANSFORMER BOBBIN  
INDUSTRIAL CO.,LTD.

Tel : 86-769-88789999 Fax : 86-769-88789989  
http:// tbi-tw.com e-mail : tb6688@ms46.hinet.net

REVISIONS

REV	SYM	DRAFTER	CHECKER	DATE
△1		X.H.GU	G.F.YANG	09/01/10
△2				
△3				



注：1.强度:2.0Kg MIN。  
2.PIN拉力須焊前1.5Kg MIN焊后2.0Kg MIN。  
與TBI-239-04281.91C(CC3318-CASE-B8-91)配套使用；

DWG NO.	CC3318-5P-TH-5.0-B8-12				
PART NO.	MATERIAL (BOBBIN)	MATERIAL (TERMINAL)	TERMINAL (PLATING)	PIN ALLOCATION	NOTE
TBI-239-04281.1206	PM-9820	CP WIRE	Sn	ALL PIN	S
TOLERANCE: 0<L<=4:±0.1 4<L<=16:±0.2 16<L:±0.3 PIN PITCH:±0.2					
				UNIT : m / m	SCALE 1 : 1

Finish: 1. PB wire Immersion Sn on terminal : Thickness:Sn plating,100,5  $\mu$ m (200  $\mu$  inches) min,Base nickel 0.625  $\mu$ m (25  $\mu$  inches) min.  
2. CP wire Immersion Sn on terminal : Thickness:Sn plating,100,5  $\mu$ m (200  $\mu$  inches) min.  
3. Coplanarity deviation: 0.10 mm (0.004 inches) max.

REV	1
-----	---