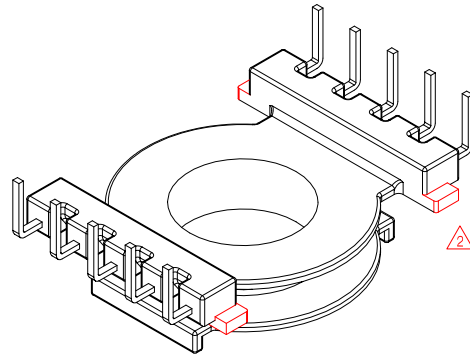
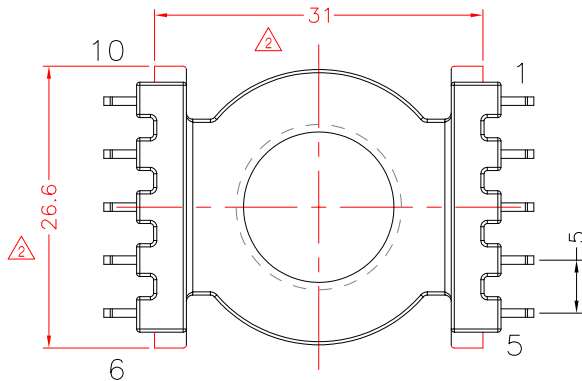
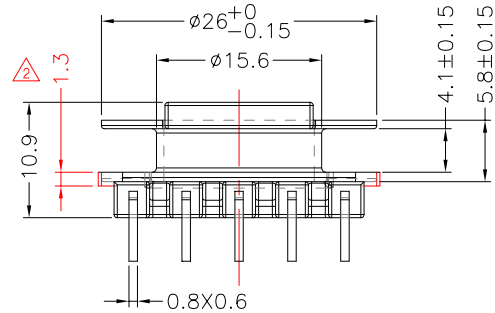
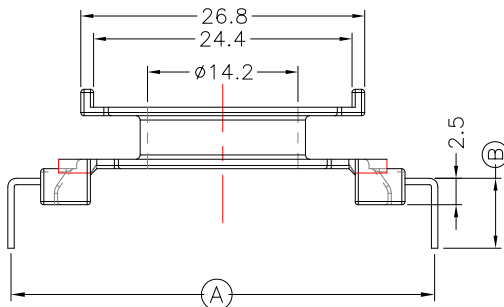
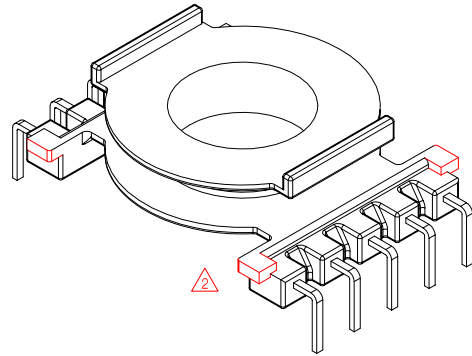
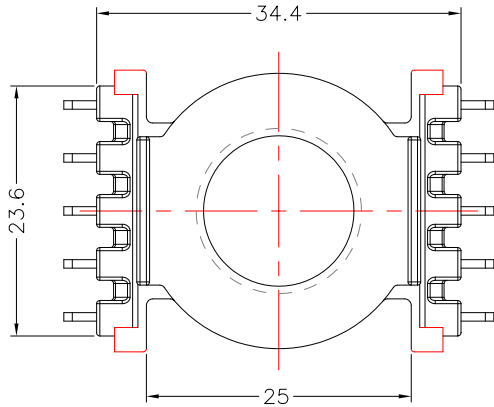




TRANSFORMER BOBBIN
INDUSTRIAL CO.,LTD.

Tel : 86-769-88789999 Fax : 86-769-88789989
http:// tbi-tw.com e-mail : tb6688@ms46.hinet.net

REVISIONS				
REV	SYM	DRAFTER	CHECKER	DATE
△1		X.H.GU	G.F.YANG	11/24/09
△2		X.H.GU	G.F.YANG	05/17/10
△3				



DWG NO.	CC33-12.2-10P-THT-5.0-0H-12				
PART NO.	MATERIAL (BOBBIN)	MATERIAL (TERMINAL)	TERMINAL (PLATING)	PIN ALLOCATION	NOTE
TBI-239-04081.1206	PM-9820	CP WIRE	Sn	ALL PIN (A)=40±0.3 (B)=6.6±0.2	S
TBI-239-04081.1216	PM-9820	CP WIRE	Sn	ALL PIN (A)=38.5±0.3 (B)=6.6±0.2	H
TBI-239-04081.1226	PM-9820	CP WIRE	Sn	CUT PIN #2,3,4,6,10 (A)=40±0.3 (B)=6.6±0.2	
TBI-239-04081.1236	PM-9820	CP WIRE	Sn	CUT PIN #2,3,5,6,8,9 (A)=40±0.3 (B)=6.6±0.2	
TBI-239-04081.1246	PM-9820	CP WIRE	Sn	CUT PIN #8 (A)=40±0.3 (B)=6.6±0.2	
TBI-239-04081.1256	PM-9820	CP WIRE	Sn	CUT PIN #2,3,4,6,10 (A)=40±0.3 (B)=5.9±0.3	
TBI-239-04081.1266	PM-9820	CP WIRE	Sn	CUT PIN #2,4,7,8 (A)=40±0.3 (B)=6.6±0.2	
TBI-239-04081.1276	PM-9820	CP WIRE	Sn	ALL PIN (A)=40±0.3 (B)=5.9±0.3	
TBI-239-04081.1286	PM-9820	CP WIRE	Sn	CUT PIN #2,4,7,8,9 (A)=40±0.3 (B)=6.6±0.2	
TBI-239-04081.1296	PM-9820	CP WIRE	Sn	CUT PIN #2,3,4,6,8,10 (A)=40±0.3 (B)=6.6±0.2	
TBI-239-04081.12A6	PM-9820	CP WIRE	Sn	CUT PIN #1,6,7,8,9,10 (A)=40±0.3 (B)=6.6±0.2	
TBI-239-04081.12B6	PM-9820	CP WIRE	Sn	CUT PIN #1,6,7,8,9,10 (A)=40±0.3 (B)=5.5±0.2	
TBI-239-04081.12C6	PM-9820	CP WIRE	Sn	CUT PIN #1,6,7,8,9,10 (A)=40±0.3 (B)=6.0±0.2	
TBI-239-04081.12D6	PM-9820	CP WIRE	Sn	CUT PIN #6,7,8,9,10 (A)=40±0.3 (B)=6.0±0.2	
TBI-239-04081.12E6	PM-9820	CP WIRE	Sn	ALL PIN (A)=40±0.3 (B)=6.0±0.2	

TOLERANCE: 0<L<=4: ±0.1 4<L<=16: ±0.2 16<L<=63: ±0.3 UNIT : m / m SCALE 1 : 1

Finish: 1. PB wire Immersion Sn on terminal : Thickness:Sn plating,100,5 μm (200 μ inches) min.Base nickel 0.625 μm (25 μ inches) min.
2. CP wire Immersion Sn on terminal : Thickness:Sn plating,100,5 μm (200 μ inches) min.
3. Coplanarity deviation: 0.10 mm (0.004 inches) max.

REV 2