

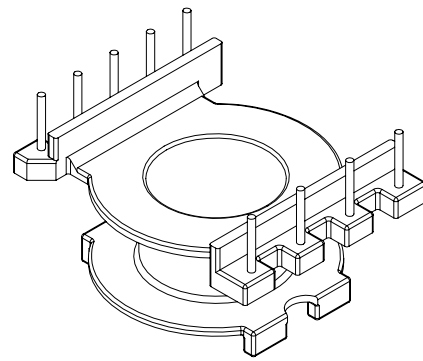
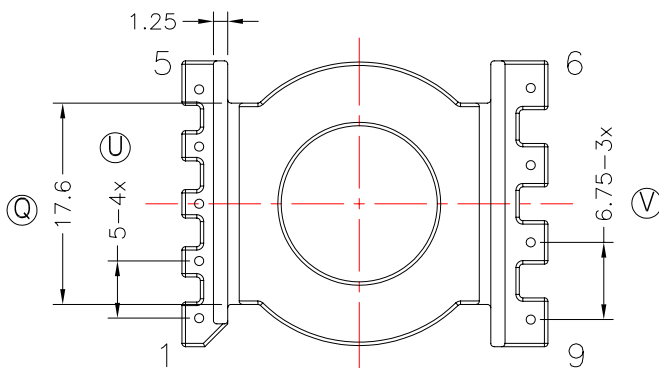
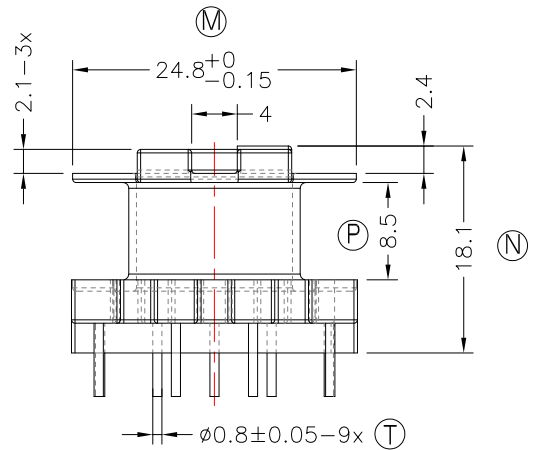
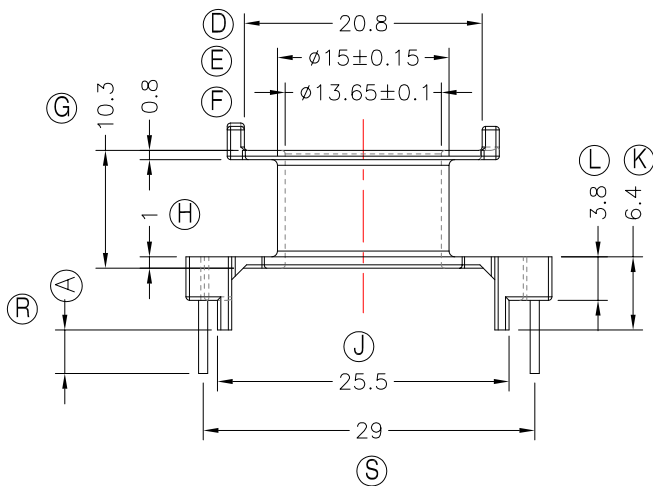
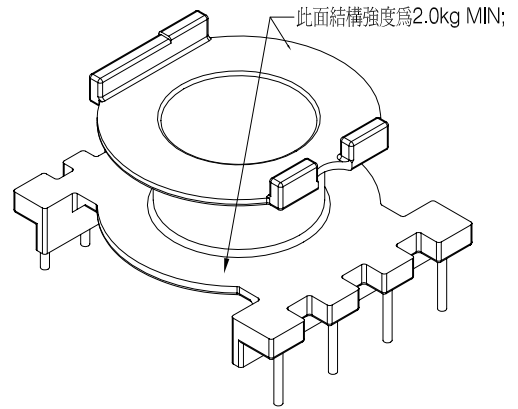
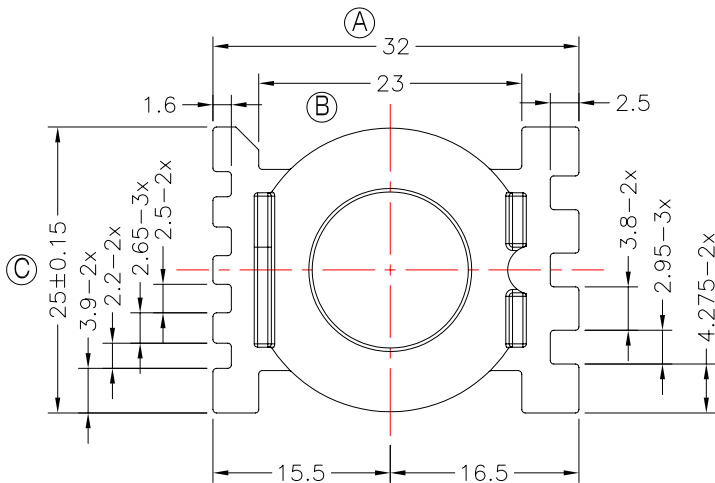


**TRANSFORMER BOBBIN
INDUSTRIAL CO.,LTD.**

Tel : 86-769-88789999 Fax : 86-769-88789989
http:// tbi-tw.com e-mail : tb6688@ms46.hinet.net

REVISIONS

REV	SYM	DRAFTER	CHECKER	DATE
1		X.H.GU	G.F.YANG	04/06/12
2				
3				



1. 焊錫前拉力:1.0KG MIN, 焊錫後拉力:2.0KG MIN
與TBI-239-02021.91C(CC30-16.6-9P-CASE-B-91)配套使用;

DWG NO. CC30-16.6-9P-TH-B6-12

PART NO.	MATERIAL (BOBBIN)	MATERIAL (TERMINAL)	TERMINAL (PLATING)	PIN ALLOCATION	NOTE
TBI-239-02261.1206	PM-9820	CP WIRE	Sn	ALL PIN (A)=3.8±0.2	S
TBI-239-02261.1216	PM-9820	CP WIRE	Sn	CUT PIN#4 (A)=5.0±0.3	暫無刀模 H
TBI-239-02261.1226	PM-9820	CP WIRE	Sn	CUT PIN#4 (A)=4.5±0.3	

TOLERANCE: 0<L<=4: ±0.1 4<L<=16: ±0.2 16<L<=63: ±0.3

UNIT : m / m

SCALE 3 : 2

Finish: 1. PB wire Immersion Sn on terminal : Thickness:Sn plating,100,5 μm (200 μ inches) min,Base nickel 0.625 μm (25 μ inches) min.
2. CP wire Immersion Sn on terminal : Thickness:Sn plating,100,5 μm (200 μ inches) min.
3. Coplanarity deviation: 0.10 mm (0.004 inches) max.

REV 1