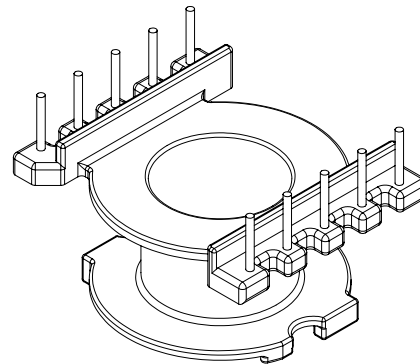
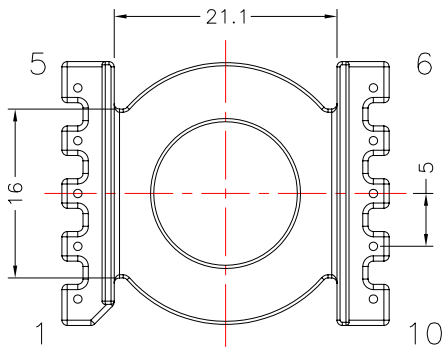
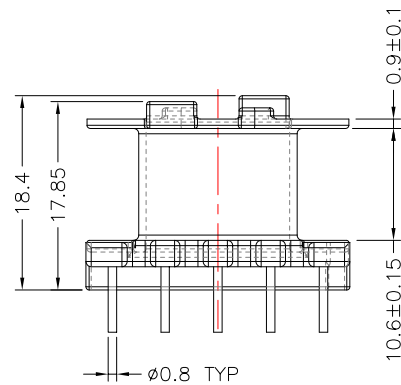
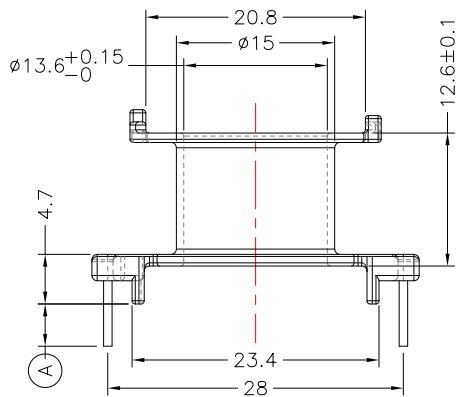
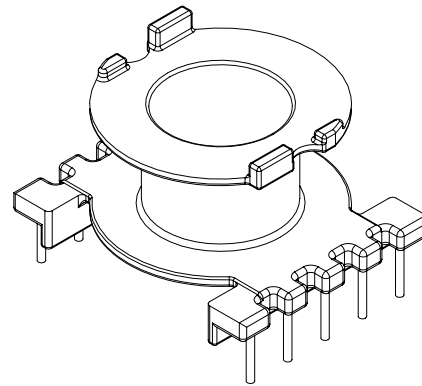
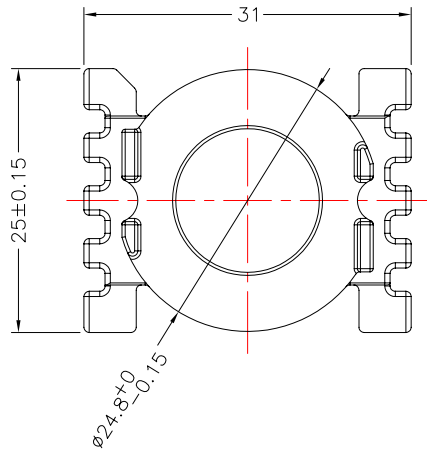




**TRANSFORMER BOBBIN
INDUSTRIAL CO.,LTD.**

Tel : 86-769-88789999 Fax : 86-769-88789989
http:// tbi-tw.com e-mail : tb6688@ms46.hinet.net

| REVISIONS | | | | |
|-----------|-----|----------|----------|----------|
| REV | SYM | DRAFTER | CHECKER | DATE |
| 1 | | YAN.TANG | G.F.YANG | 12/18/09 |
| 2 | | | | |
| 3 | | | | |



NOTE:
1. 焊錫前拉力: 1.0KG MIN, 焊錫後拉力: 1.5KG MIN

| DWG NO. | CC30-19-10P-TH-5.0-E-12 | | | | |
|--------------------|-------------------------|---------------------|--------------------|----------------------------------|------|
| PART NO. | MATERIAL (BOBBIN) | MATERIAL (TERMINAL) | TERMINAL (PLATING) | PIN ALLOCATION | NOTE |
| TBI-239-02051.1206 | PM-9820 | CP WIRE | Sn | ALL PIN (A)=4.0±0.2 | |
| TBI-239-02051.1216 | PM-9820 | CP WIRE | Sn | ALL PIN (A)=4.5±0.3 | H |
| TBI-239-02051.1226 | PM-9820 | CP WIRE | Sn | CUT PIN #3,8 (A)=3.1±0.3 | |
| TBI-239-02051.1236 | PM-9820 | CP WIRE | Sn | CUT PIN #2,3,4,8 (A)=4.0±0.2 | |
| TBI-239-02051.1246 | PM-9820 | CP WIRE | Sn | CUT PIN #6,10 (A)=3.1±0.3 | |
| TBI-239-02051.1256 | PM-9820 | CP WIRE | Sn | CUT PIN #2,3,5,6,7,8 (A)=4.0±0.2 | |
| TBI-239-02051.1266 | PM-9820 | CP WIRE | Sn | CUT PIN #2,3,5,6,7,8 (A)=5.0±0.3 | |
| TBI-239-02051.1276 | PM-9820 | CP WIRE | Sn | CUT PIN #7 (A)=5.0±0.3 | |
| TBI-239-02051.1286 | PM-9820 | CP WIRE | Sn | ALL PIN (A)=3.1±0.2 | |
| TBI-239-02051.1296 | PM-9820 | CP WIRE | Sn | ALL PIN (A)=3.5±0.2 | |

TOLERANCE: 0<L<=4: ±0.1 4<L<=16: ±0.2 16<L<=63: ±0.3 UNIT : m / m SCALE 3 : 2

Finish: 1. PB wire Immersion Sn on terminal : Thickness:Sn plating,100,5 μm (200 μ inches) min,Base nickel 0.625 μm (25 μ inches) min.
2. CP wire Immersion Sn on terminal : Thickness:Sn plating,100,5 μm (200 μ inches) min.
3. Coplanarity deviation: 0.10 mm (0.004 inches) max.

REV 1