

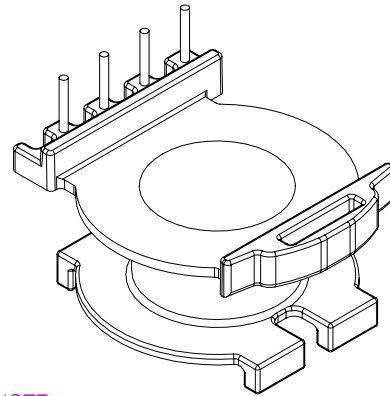
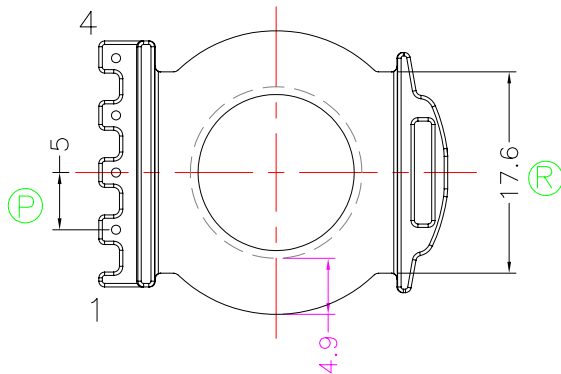
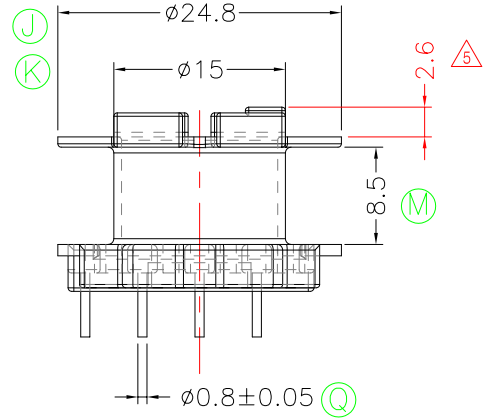
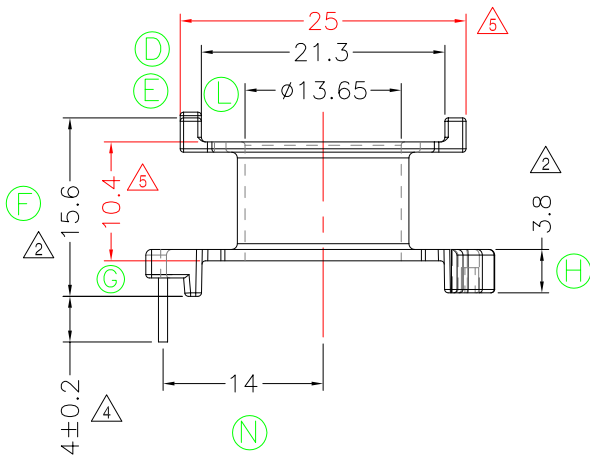
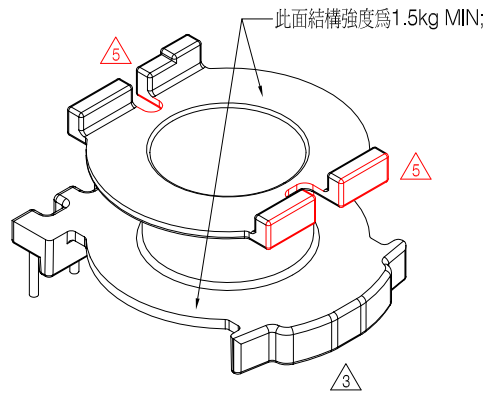
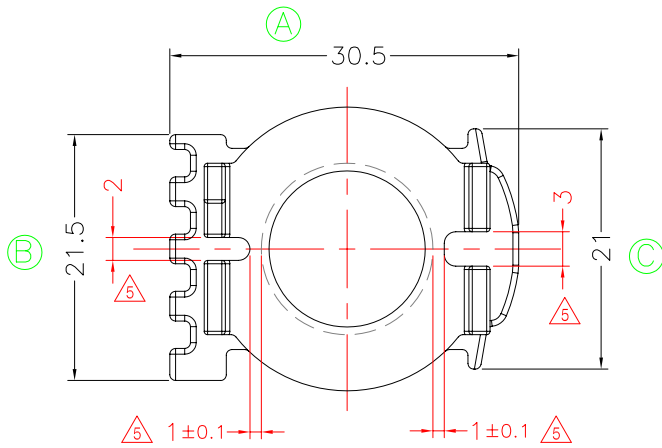


**TRANSFORMER BOBBIN  
INDUSTRIAL CO.,LTD.**

Tel : 86-769-88789999 Fax : 86-769-88789989  
 http:// tbi-tw.com e-mail : tb6688@ms46.hinet.net

REVISIONS

REV	SYM	DRAFTER	CHECKER	DATE
3		X.H.GU	G.F.YANG	08/11/09
4		YAN.TANG	G.F.YANG	12/16/09
5		X.H.GU	G.F.YANG	07/08/10



NOTE:

- 1. 焊錫前拉力:1.0KG MIN, 焊錫後拉力:1.5KG MIN
- 2. Winding Space=8.5\*4.9=41.65mm<sup>2</sup>

DWG NO. CC30-16.6-4P-TH-D-12

PART NO. MATERIAL (BOBBIN) MATERIAL (TERMINAL) TERMINAL (PLATING) PIN ALLOCATION NOTE

TBI-239-02041.1206	PM-9820	CP WIRE	Sn	ALL PIN	S
					H

TOLERANCE: 0<L<=4: ±0.1 4<L<=16: ±0.2 16<L<=63: ±0.3 UNIT : m / m SCALE 1 : 1

Finish: 1. PB wire Immersion Sn on terminal : Thickness:Sn plating,100,5 μm (200 μ inches) min,Base nickel 0.625 μm (25 μ inches) min.  
 2. CP wire Immersion Sn on terminal : Thickness:Sn plating,100,5 μm (200 μ inches) min.  
 3. Coplanarity deviation: 0.10 mm (0.004 inches) max.

REV 5