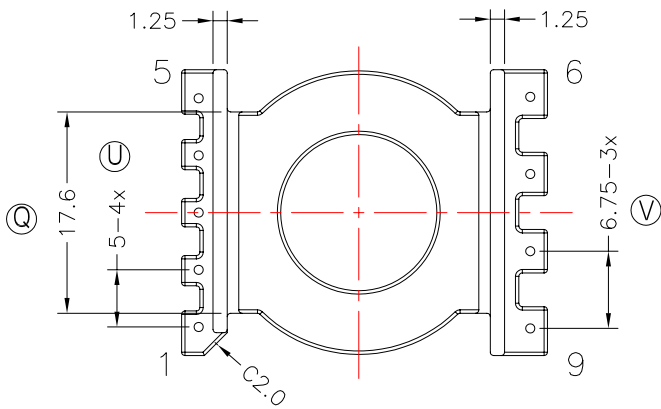
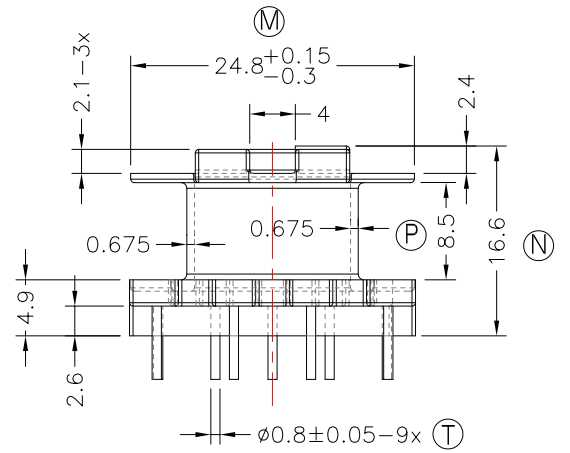
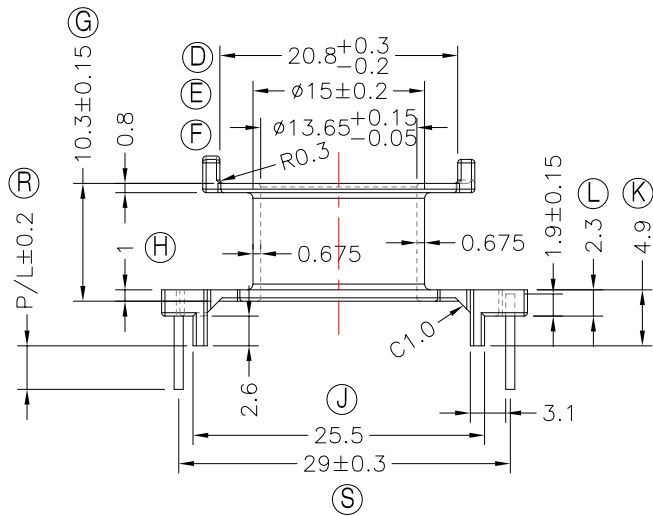
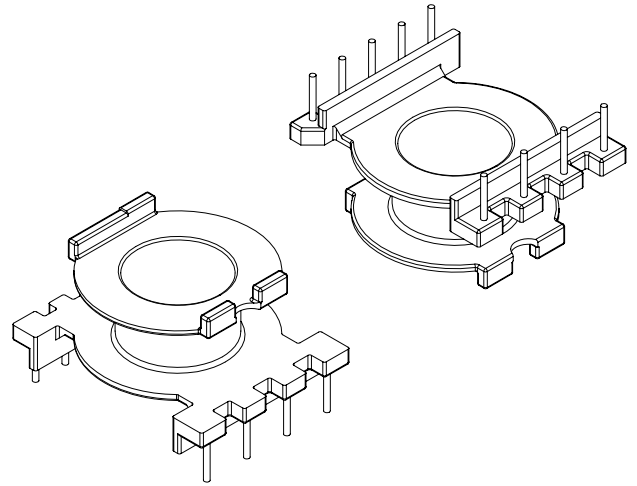
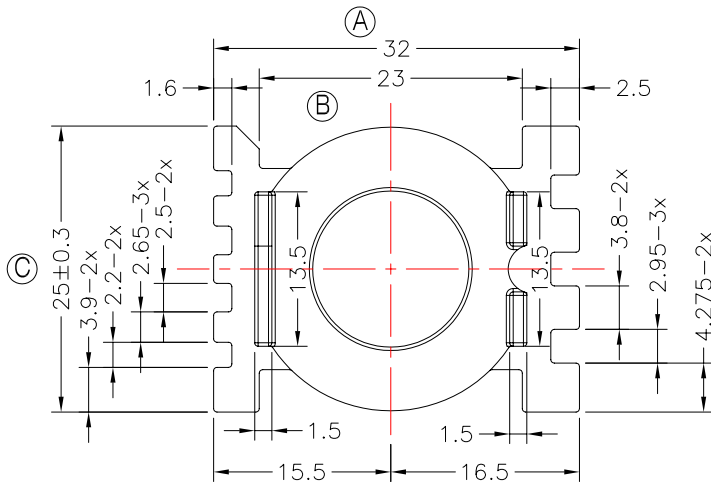


REVISIONS				
REV	SYM	DRAFTER	CHECKER	DATE
①		X.X.YUAN	G.F.YANG	01/29/15
②				
③				



量產模

- NOTE:
- 任意一點強度須2.0kg MIN;
 - 耐壓4.0Kv /1.5mA 60S;
 - 焊錫溫度:450°±10° 3SEC;
 - 焊錫前拉力:1.0KG MIN,焊錫後拉力:2.0KG MIN;

DWG NO.	CC30-16.6-9P-TH-B-11				PIN ALLOCATION		NOTE
PART NO.	MATERIAL (BOBBIN)	MATERIAL (TERMINAL)	TERMINAL (PLATING)	PIN ALLOCATION		NOTE	
TBI-239-02021.1106	PM-9630	CP WIRE	Sn	ALL PIN	P/L=4.5±0.2		S
TBI-239-02021.1116	PM-9630	CP WIRE	Sn	ALL PIN	P/L=3.0±0.2		H
TBI-239-02021.1126	PM-9630	CP WIRE	Sn	ALL PIN	P/L=3.1±0.2		

Finish:	TOLERANCE: 0<L<=4: ±0.1 4<L<=16: ±0.2 16<L<=63: ±0.3			UNIT : m / m	SCALE 3 : 2
	1. PB wire Immersion Sn on terminal : Thickness:Sn plating,100%,5 μm (200 μ inches) min,Base nickel 0.625 μm (25 μ inches) min. 2. CP wire Immersion Sn on terminal : Thickness:Sn plating,100%,5 μm (200 μ inches) min. 3. Coplanarity deviation: 0.10 mm (0.004 inches) max.			REV	1