

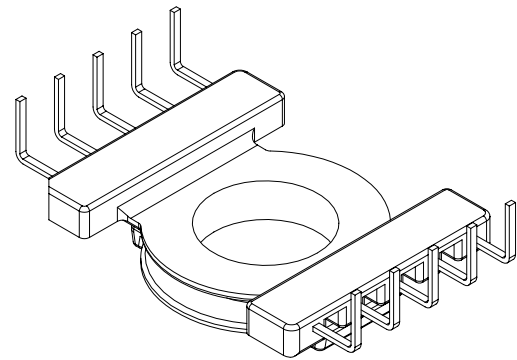
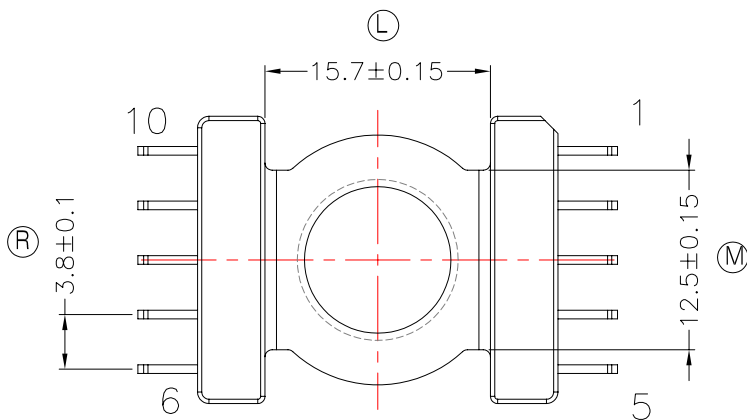
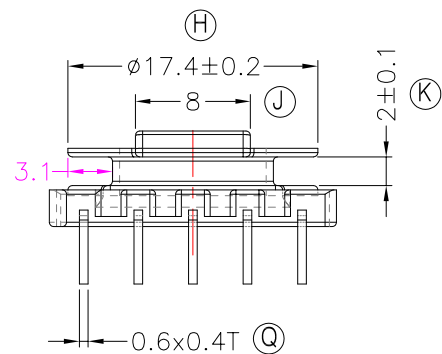
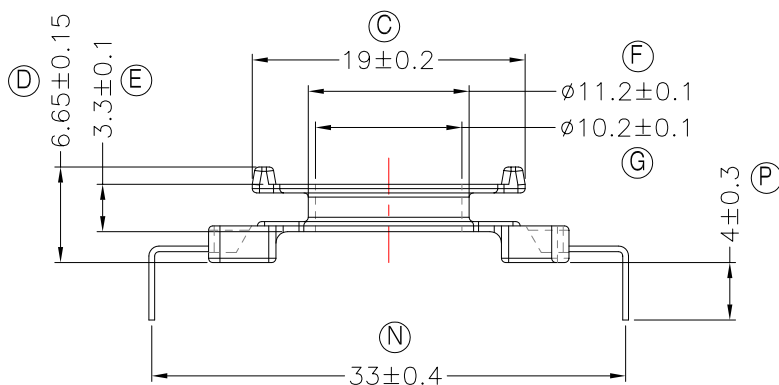
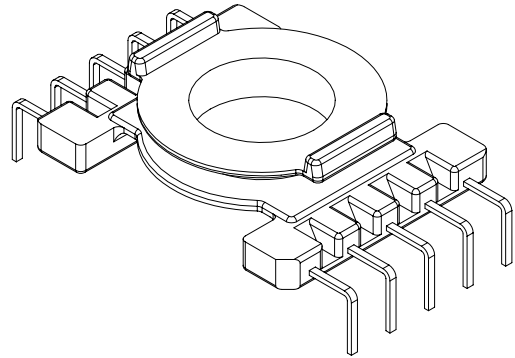
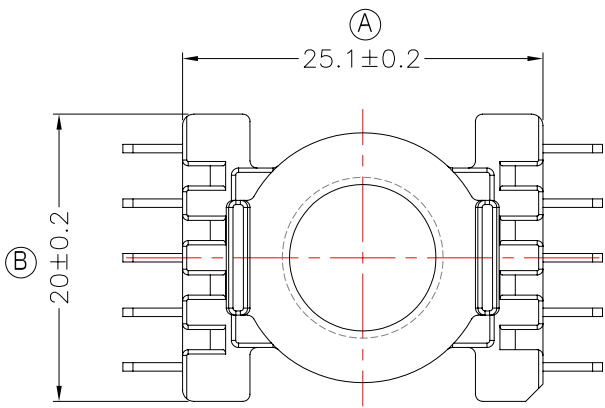


TRANSFORMER BOBBIN INDUSTRIAL CO.,LTD.

Tel : 86-769-88789999 Fax : 86-769-88789989
 http:// tbi-tw.com e-mail : tb6688@ms46.hinet.net

REVISIONS

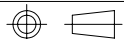
REV	SYM	DRAFTER	CHECKER	DATE
1		H.X.DUAN	W.H.HSU	06/12/10
2				
3				



NOTE:
 WINDING SPACE: $2 \times 3.1 \text{mm} = 6.2 \text{mm}^2$

DWG NO. CC23-7.1-10P-THT-0D-11

PART NO.	MATERIAL (BOBBIN)	MATERIAL (TERMINAL)	TERMINAL (PLATING)	PIN ALLOCATION	NOTE
TBI-239-05041.1106	PM-9630	CP WIRE	Sn	ALL PIN	S



TOLERANCE: $0 < L \leq 4: \pm 0.1$ $4 < L \leq 16: \pm 0.2$ $16 < L \leq 63: \pm 0.3$

UNIT : m / m

SCALE 1 : 1

Finish: 1. PB wire Immersion Sn on terminal : Thickness:Sn plating, $100,5 \mu\text{m}$ (200μ inches) min, Base nickel $0.625 \mu\text{m}$ (25μ inches) min.
 2. CP wire Immersion Sn on terminal : Thickness:Sn plating, $100,5 \mu\text{m}$ (200μ inches) min.
 3. Coplanarity deviation: 0.10 mm (0.004 inches) max.

REV 1