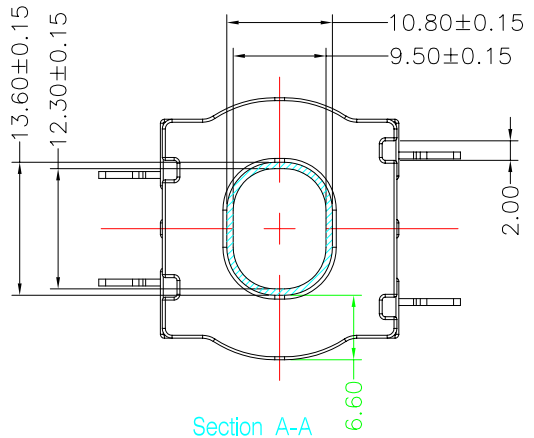
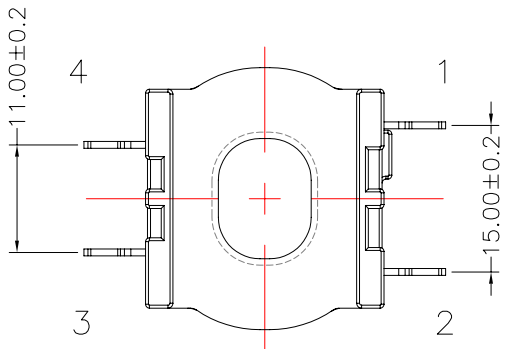
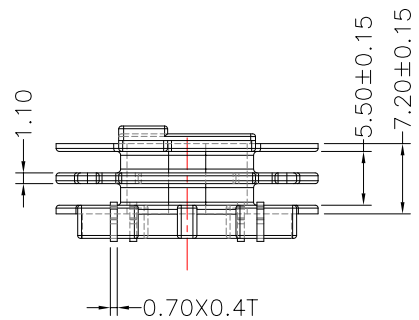
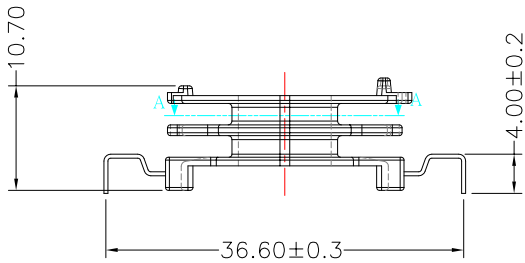
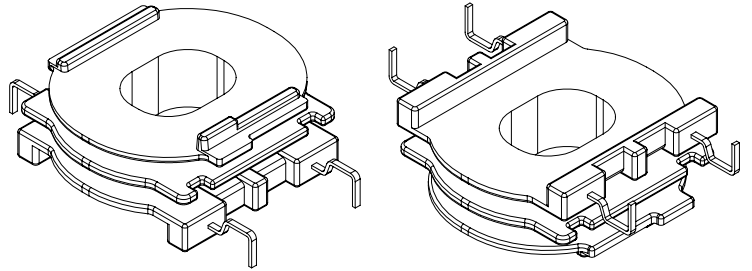
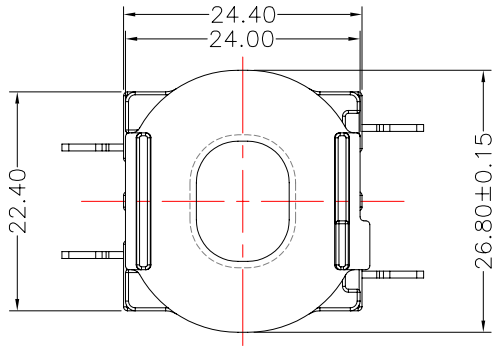




TRANSFORMER BOBBIN  
INDUSTRIAL CO.,LTD.

Tel : 86-769-88789999 Fax : 86-769-88789989  
http:// tbi-tw.com e-mail : tb6688@ms46.hinet.net

REVISIONS				
REV	SYM	DRAFTER	CHECKER	DATE
①		G.F.YANG	W.H.HSU	03/25/10
②				
③				



NOTE:  
1. WINDING SPACE:  $6.6\text{mm} \times 4.4\text{mm} = 29.04\text{mm}^2$

DWG NO.	ATQ32-12.3A-4P-THT-0G-12-2S				
PART NO.	MATERIAL (BOBBIN)	MATERIAL (TERMINAL)	TERMINAL (PLATING)	PIN ALLOCATION	NOTE
TBI-238-16072.1206	PM-9820	CP WIRE	Sn	ALL PIN	
	TOLERANCE: $0 < L \leq 4: \pm 0.1$ $4 < L \leq 16: \pm 0.2$ $16 < L \leq 63: \pm 0.3$			UNIT : m / m	SCALE 1 : 1

Finish: 1. PB wire Immersion Sn on terminal : Thickness:Sn plating,  $100,5 \mu\text{m}$  ( $200 \mu$  inches) min,Base nickel  $0.625 \mu\text{m}$  ( $25 \mu$  inches) min.  
2. CP wire Immersion Sn on terminal : Thickness:Sn plating,  $100,5 \mu\text{m}$  ( $200 \mu$  inches) min.  
3. Coplanarity deviation:  $0.10 \text{ mm}$  ( $0.004$  inches) max.

REV 1