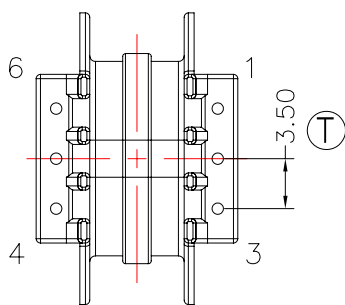
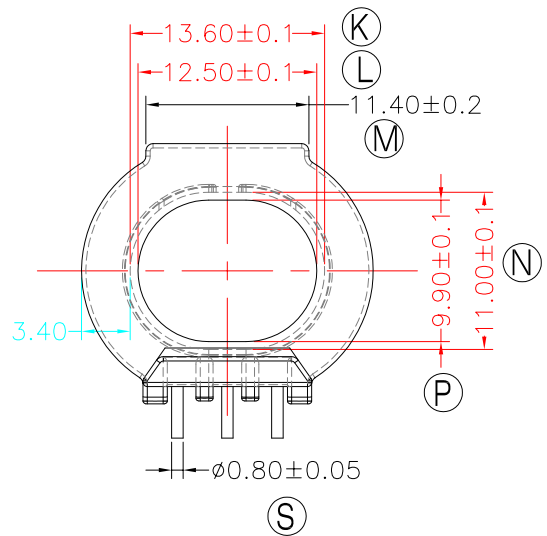
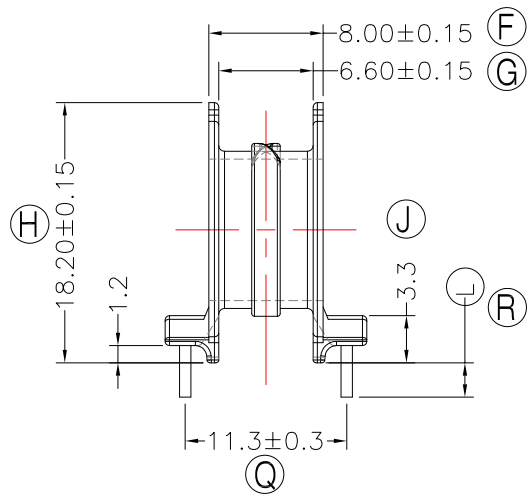
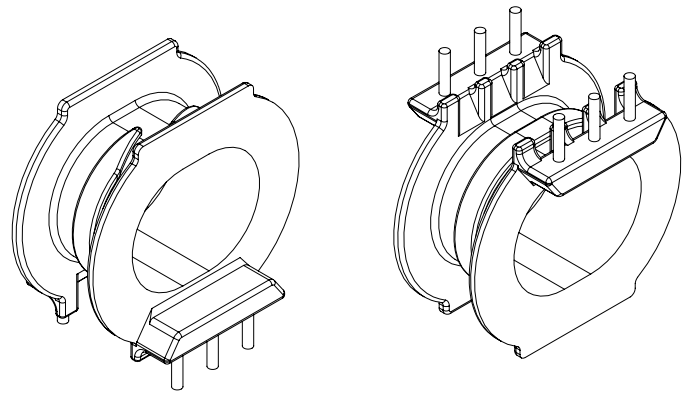
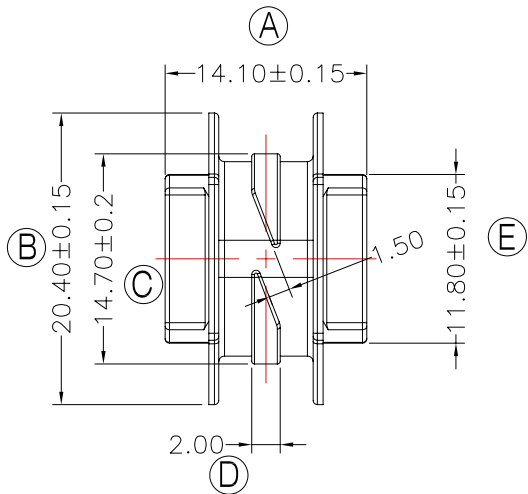




TRANSFORMER BOBBIN  
INDUSTRIAL CO.,LTD.

Tel : 86-769-88789999 Fax : 86-769-88789989  
http:// tbi-tw.com e-mail : tb6688@ms46.hinet.net

REVISIONS				
REV	SYM	DRAFTER	CHECKER	DATE
1		X.H.GU	G.F.YANG	08/14/13
2				
3				



NOTE:

- 1.任一點的強度為1.5kgMIN.
- 2.PIN拉力須焊前1.0KgMIN焊后1.5KgMIN.
- 3.切斷面焊錫必須能帶出錫尖.
- 4.Winding Space=6.6\*3.4=22.44mm<sup>2</sup>

DWG NO.	ATQ23.7-14.6-6P-TH-C0-12				
PART NO.	MATERIAL (BOBBIN)	MATERIAL (TERMINAL)	TERMINAL (PLATING)	PIN ALLOCATION	NOTE
TBI-238-10301.1206	PM-9820	CP WIRE	Sn	ALL PIN ⌀= 2.2+/-0.2	
TBI-238-10301.1216	PM-9820	CP WIRE	Sn	CUT PIN#3,5⌀=2.2+/-0.2	
TBI-238-10301.1226	PM-9820	CP WIRE	Sn	ALL PIN ⌀= 3.0+/-0.2	
TBI-238-10301.1236	PM-9820	CP WIRE	Sn	CUT PIN#3,5⌀=3.0+/-0.2	
	TOLERANCE: 0<L<=4: ±0.1 4<L<=16: ±0.2 16<L<=63: ±0.3			UNIT : m / m	SCALE 1 : 1
Finish:	1. PB wire Immersion Sn on terminal : Thickness:Sn plating,100,5 μm (200 μ inches) min,Base nickel 0.625 μm (25 μ inches) min. 2. CP wire Immersion Sn on terminal : Thickness:Sn plating,100,5 μm (200 μ inches) min. 3. Coplanarity deviation: 0.10 mm (0.004 inches) max.				REV 1