

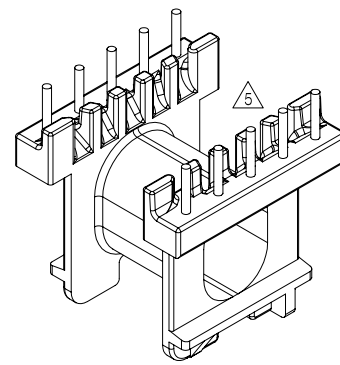
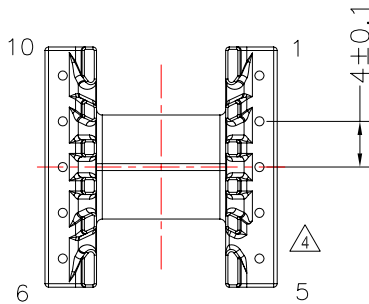
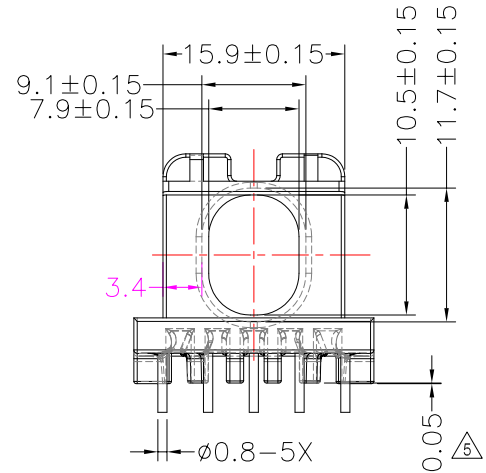
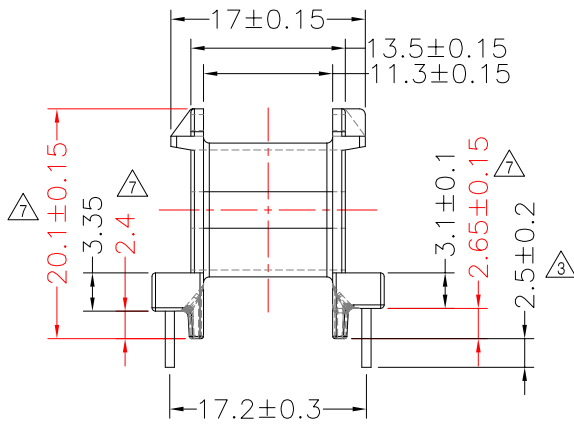
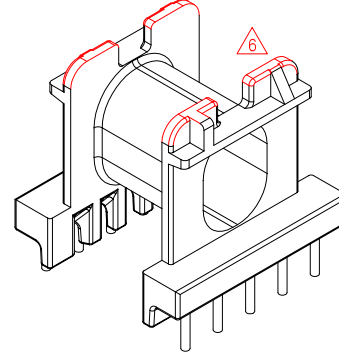
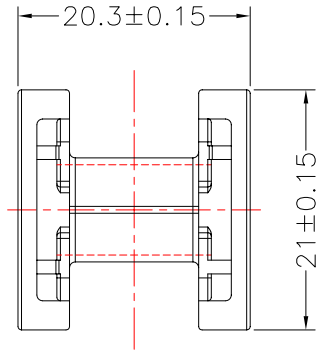


TRANSFORMER BOBBIN INDUSTRIAL CO.,LTD.

Tel : 86-769-88789999 Fax : 86-769-88789989
 http:// tbi-tw.com e-mail : tb6688@ms46.hinet.net

REVISIONS

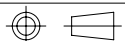
REV	SYM	DRAFTER	CHECKER	DATE
△5		G.F.YANG	W.H.HSU	06/24/10
△6		X.H.GU	G.F.YANG	07/08/10
△7		X.H.GU	G.F.YANG	07/29/10



NOTE:
 WINDING SPACE: 11.3mm*3.4mm=38.42mm²

DWG NO. ATQ23-20A-10P-TH-H-12

PART NO.	MATERIAL (BOBBIN)	MATERIAL (TERMINAL)	TERMINAL (PLATING)	PIN ALLOCATION	NOTE
TBI-238-10081.1206	PM-9820	CP WIRE	Sn	ALL PIN	S
TBI-238-10081.1216	PM-9820	CP WIRE	Sn	CUT PIN#8,9,10	H



TOLERANCE: 0<L<=4:±0.1 4<L<=16:±0.2 16<L<=63:±0.3

UNIT : m / m

SCALE 1 : 1

Finish: 1. PB wire Immersion Sn on terminal : Thickness:Sn plating,100,5 μm (200 μ inches) min,Base nickel 0.625 μm (25 μ inches) min.
 2. CP wire Immersion Sn on terminal : Thickness:Sn plating,100,5 μm (200 μ inches) min.
 3. Coplanarity deviation: 0.10 mm (0.004 inches) max.

REV 7