

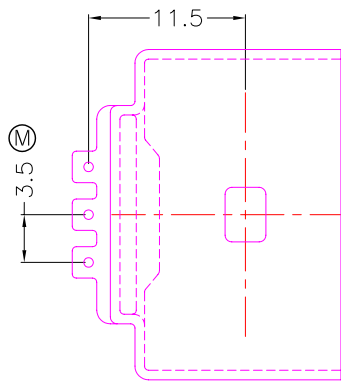
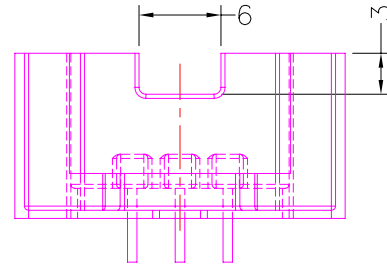
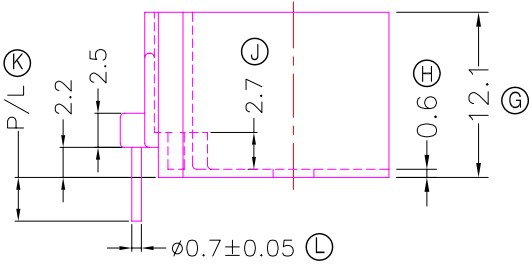
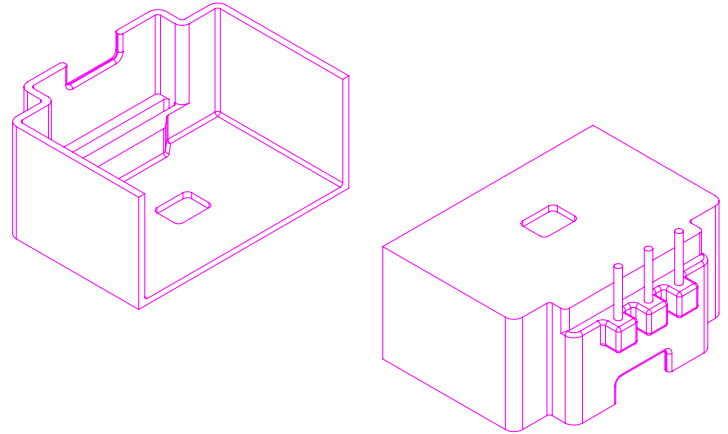
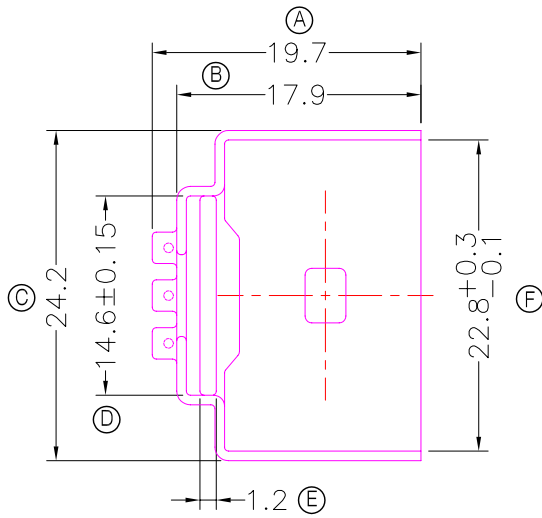


TRANSFORMER BOBBIN
INDUSTRIAL CO.,LTD.

Tel : 86-769-88789999 Fax : 86-769-88789989
http:// tbi-tw.com e-mail : tb6688@ms46.hinet.net

REVISIONS

REV	SYM	DRAFTER	CHECKER	DATE
①		X.H.GU	G.F.YANG	12/07/15
②				
③				



NOTE:

- 1.耐壓4.0Kv /1.5mA 60S;
 - 2.焊錫溫度:450°±10° 3SEC
 - 3.任意一點強度須1.5kg MIN;
 - 4.焊錫前拉力:1.0KG MIN,焊錫後拉力:1.5KG MIN;
- 與TBI-238-43211.11XX(ATQ22-11.8-5P-TL-2A-11)配套使用;

DWG NO. ATQ22-11.8-3P-CASE-B2-11

PART NO.	MATERIAL (BOBBIN)	MATERIAL (TERMINAL)	TERMINAL (PLATING)	PIN ALLOCATION	NOTE
TBI-238-43221.1106	PM-9630	CP WIRE	Sn	ALL PIN P/L=3.2±0.2	S
TBI-238-43221.1116	PM-9630	CP WIRE	Sn	ALL PIN P/L=3.0±0.2	H
TBI-238-43221.1126	PM-9630	CP WIRE	Sn	ALL PIN P/L=2.7±0.2	

TBI-238-43221.1106	PM-9630	CP WIRE	Sn	ALL PIN P/L=3.2±0.2	S
TBI-238-43221.1116	PM-9630	CP WIRE	Sn	ALL PIN P/L=3.0±0.2	H
TBI-238-43221.1126	PM-9630	CP WIRE	Sn	ALL PIN P/L=2.7±0.2	

TBI-238-43221.1106	PM-9630	CP WIRE	Sn	ALL PIN P/L=3.2±0.2	S
TBI-238-43221.1116	PM-9630	CP WIRE	Sn	ALL PIN P/L=3.0±0.2	H
TBI-238-43221.1126	PM-9630	CP WIRE	Sn	ALL PIN P/L=2.7±0.2	

TBI-238-43221.1106	PM-9630	CP WIRE	Sn	ALL PIN P/L=3.2±0.2	S
TBI-238-43221.1116	PM-9630	CP WIRE	Sn	ALL PIN P/L=3.0±0.2	H
TBI-238-43221.1126	PM-9630	CP WIRE	Sn	ALL PIN P/L=2.7±0.2	

TBI-238-43221.1106	PM-9630	CP WIRE	Sn	ALL PIN P/L=3.2±0.2	S
TBI-238-43221.1116	PM-9630	CP WIRE	Sn	ALL PIN P/L=3.0±0.2	H
TBI-238-43221.1126	PM-9630	CP WIRE	Sn	ALL PIN P/L=2.7±0.2	

TBI-238-43221.1106	PM-9630	CP WIRE	Sn	ALL PIN P/L=3.2±0.2	S
TBI-238-43221.1116	PM-9630	CP WIRE	Sn	ALL PIN P/L=3.0±0.2	H
TBI-238-43221.1126	PM-9630	CP WIRE	Sn	ALL PIN P/L=2.7±0.2	

TBI-238-43221.1106	PM-9630	CP WIRE	Sn	ALL PIN P/L=3.2±0.2	S
TBI-238-43221.1116	PM-9630	CP WIRE	Sn	ALL PIN P/L=3.0±0.2	H
TBI-238-43221.1126	PM-9630	CP WIRE	Sn	ALL PIN P/L=2.7±0.2	

TBI-238-43221.1106	PM-9630	CP WIRE	Sn	ALL PIN P/L=3.2±0.2	S
TBI-238-43221.1116	PM-9630	CP WIRE	Sn	ALL PIN P/L=3.0±0.2	H
TBI-238-43221.1126	PM-9630	CP WIRE	Sn	ALL PIN P/L=2.7±0.2	

TBI-238-43221.1106	PM-9630	CP WIRE	Sn	ALL PIN P/L=3.2±0.2	S
TBI-238-43221.1116	PM-9630	CP WIRE	Sn	ALL PIN P/L=3.0±0.2	H
TBI-238-43221.1126	PM-9630	CP WIRE	Sn	ALL PIN P/L=2.7±0.2	

TBI-238-43221.1106	PM-9630	CP WIRE	Sn	ALL PIN P/L=3.2±0.2	S
TBI-238-43221.1116	PM-9630	CP WIRE	Sn	ALL PIN P/L=3.0±0.2	H
TBI-238-43221.1126	PM-9630	CP WIRE	Sn	ALL PIN P/L=2.7±0.2	

TBI-238-43221.1106	PM-9630	CP WIRE	Sn	ALL PIN P/L=3.2±0.2	S
TBI-238-43221.1116	PM-9630	CP WIRE	Sn	ALL PIN P/L=3.0±0.2	H
TBI-238-43221.1126	PM-9630	CP WIRE	Sn	ALL PIN P/L=2.7±0.2	

Finish: 1. PB wire Immersion Sn on terminal : Thickness:Sn plating,100%,5 μm (200 μ inches) min,Base nickel 0.625 μm (25 μ inches) min.
2. CP wire Immersion Sn on terminal : Thickness:Sn plating,100%,5 μm (200 μ inches) min.
3. Coplanarity deviation: 0.10 mm (0.004 inches) max.

REV 1