

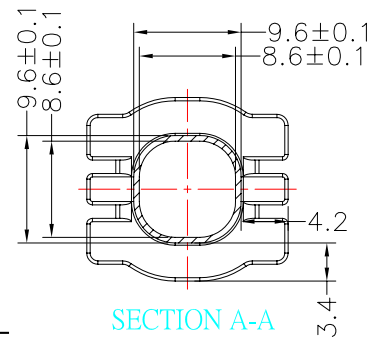
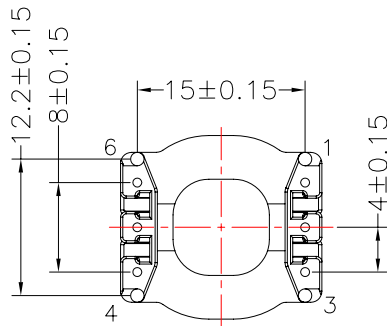
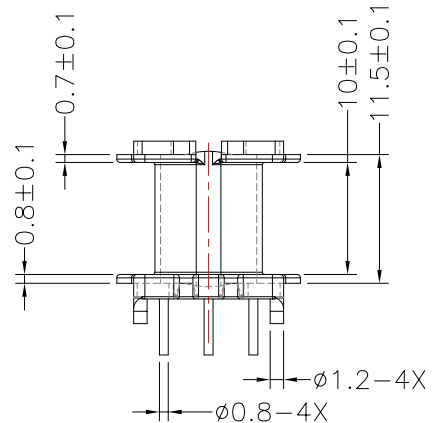
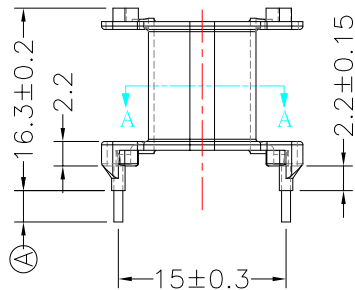
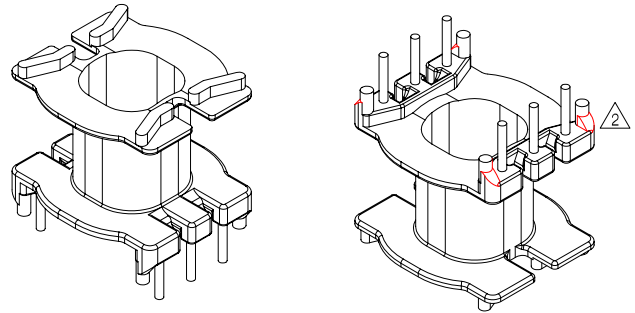
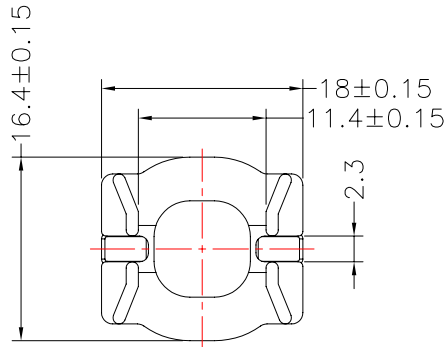


TRANSFORMER BOBBIN
INDUSTRIAL CO.,LTD.

Tel : 86-769-88789999 Fax : 86-769-88789989
http:// tbi-tw.com e-mail : tb6688@ms46.hinet.net

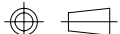
REVISIONS

REV	SYM	DRAFTER	CHECKER	DATE
①		YAN.TANG	G.F.YANG	04/03/09
②		YAN.TANG	G.F.YANG	06/10/09
③				



NOTE:
WINDING SPACE: 3.4mm*10mm=34mm²

DWG NO.	ATQ21-16.8-6P-TH-D-12				
PART NO.	MATERIAL (BOBBIN)	MATERIAL (TERMINAL)	TERMINAL (PLATING)	PIN ALLOCATION	NOTE
TBI-238-13041.1206	PM-9820	CP WIRE	Sn	ALL PIN ① =2.8±0.3	S
TBI-238-13041.1216	PM-9820	CP WIRE	Sn	CUT PIN # 5 ① =2.8±0.3	H
TBI-238-13041.1226	PM-9820	CP WIRE	Sn	CUT PIN # 2 ① =2.8±0.3	
TBI-238-13041.1236	PM-9820	CP WIRE	Sn	CUT PIN # 1 ① =3.0±0.2	
TBI-238-13041.1246	PM-9820	CP WIRE	Sn	CUT PIN # 4 ① =3.3±0.3	
TBI-238-13041.1256	PM-9820	CP WIRE	Sn	CUT PIN #1,2 ① =3.3±0.3	
TBI-238-13041.1266	PM-9820	CP WIRE	Sn	CUT PIN #3,5 ① =3.5±0.3	
TBI-238-13041.1276	PM-9820	CP WIRE	Sn	ALL PIN ① =3.5±0.3	
TBI-238-13041.1286	PM-9820	CP WIRE	Sn	ALL PIN ① =3.3±0.3	



TOLERANCE: .XX±0.1 .XXX±0.05

UNIT : m/m

SCALE 1 : 1

Finish: 1. PB wire Immersion Sn on terminal : Thickness:Sn plating,100,5 μm (200 μ inches) min,Base nickel 0.625 μm (25 μ inches) min.
2. CP wire Immersion Sn on terminal : Thickness:Sn plating,100,5 μm (200 μ inches) min.
3. Coplanarity deviation: 0.10 mm (0.004 inches)max.

REV 2