

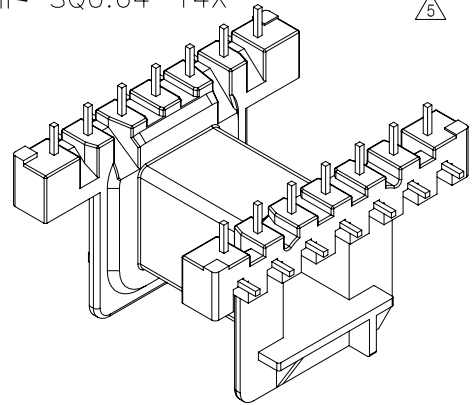
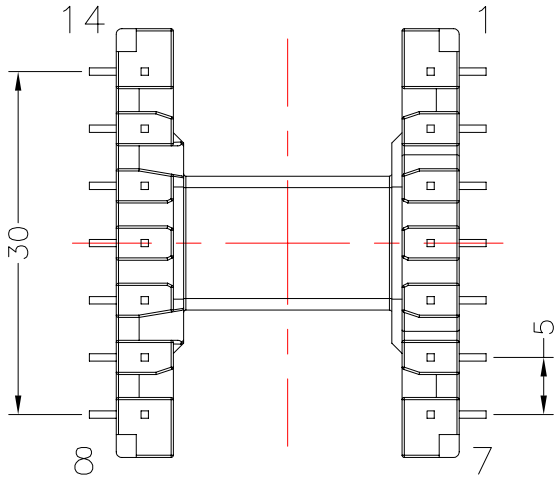
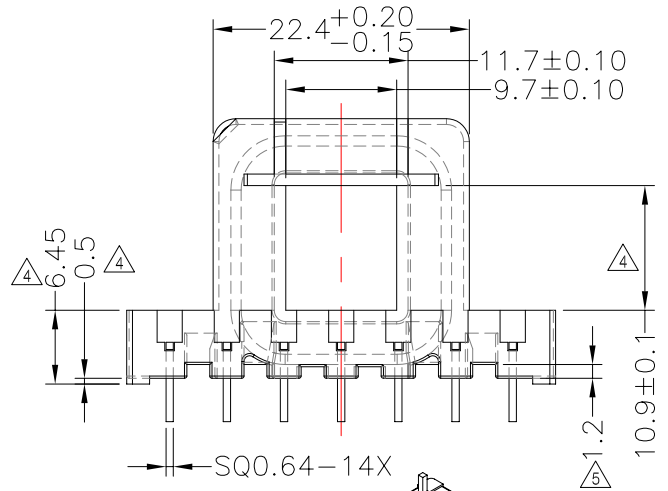
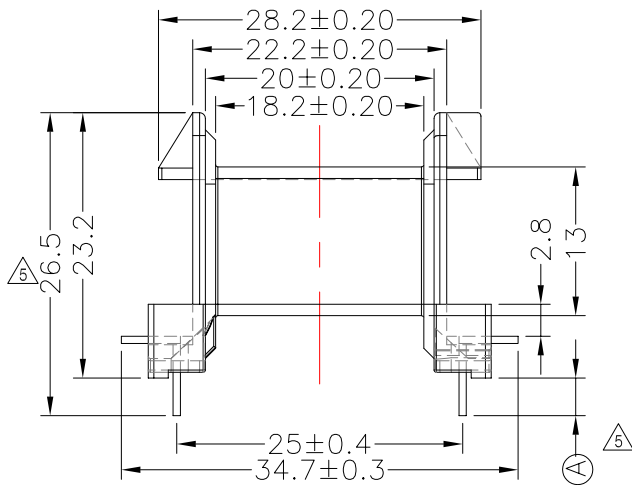
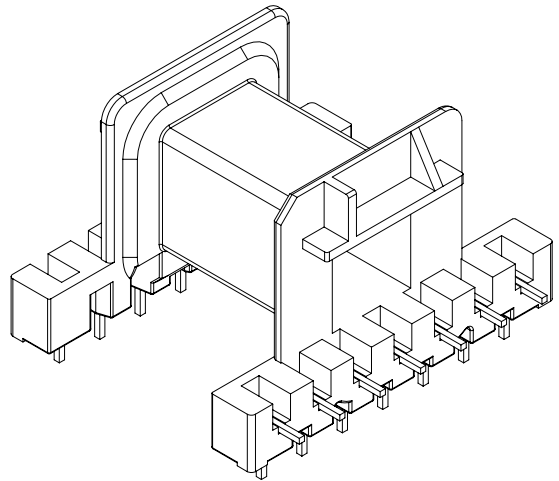
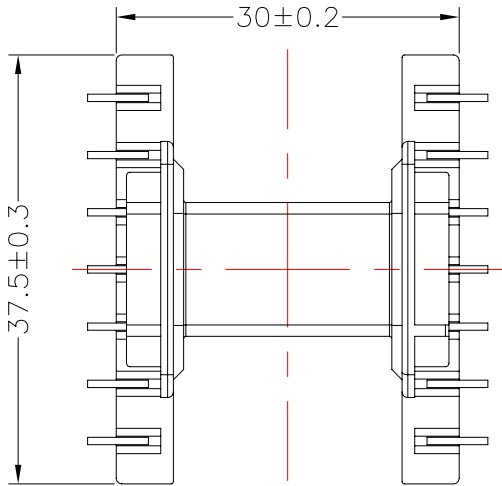


TRANSFORMER BOBBIN  
INDUSTRIAL CO.,LTD.

Tel : 86-769-88789999 Fax : 86-769-88789989  
http:// tbi-tw.com e-mail : tb6688@ms46.hinet.net

REVISIONS

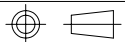
REV	SYM	DRAFTER	CHECKER	DATE
3		S.Y.TANG	S.M.SHIH	01/26/07
4		G.F.YANG	W.H.HSU	04/01/08
5		G.F.YANG	W.H.HSU	01/16/09



△ Note : 推力要求最小 2.0Kg

DWG NO. E32/11A-14P-THL-5.0-B-9

PART NO.	MATERIAL (BOBBIN)	MATERIAL (TERMINAL)	TERMINAL (PLATING)	PIN ALLOCATION	NOTE
TBI-201-05021.906	PET(FR530 or VG30)	CP WIRE	Sn	△5 ALL PIN (A)=3.3+0.1/-0.2	
TBI-201-05021.916	PET(FR530 or VG30)	CP WIRE	Sn	△5 CUT PIN 9,11,13 (A)=3.3+0.1/-0.2	52GTR6120001
TBI-201-05021.926	PET(FR530 or VG30)	CP WIRE	Sn	CUT PIN 4,11,12 (A)=3.1±0.2	52GEF3212P04



TOLERANCE: .X±0.15 .XX±0.10 .XXX±0.05

UNIT : m / m

SCALE 3 : 2

Finish: 1. Pb wire Immersion Sn on terminal : Thickness:Sn plating,100,5 μm (200 μ inches) min,Base nickel 0.625 μm (25 μ inches) min.  
2. CP wire Immersion Sn on terminal : Thickness:Sn plating,100,5 μm (200 μ inches) min.  
3. Coplanarity deviation: 0.10 mm (0.004 inches) max.

REV 5