

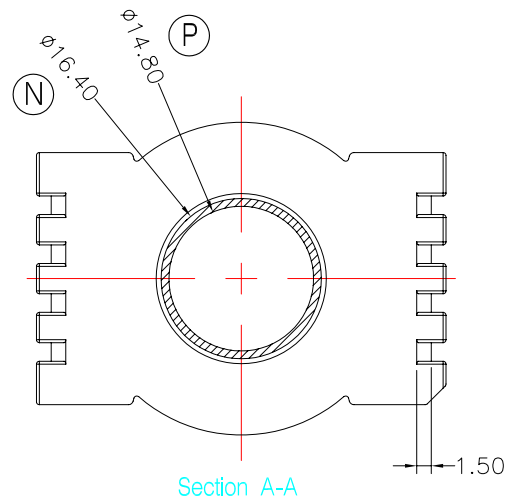
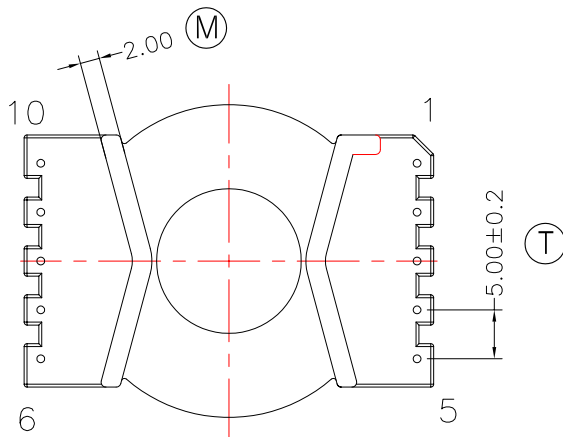
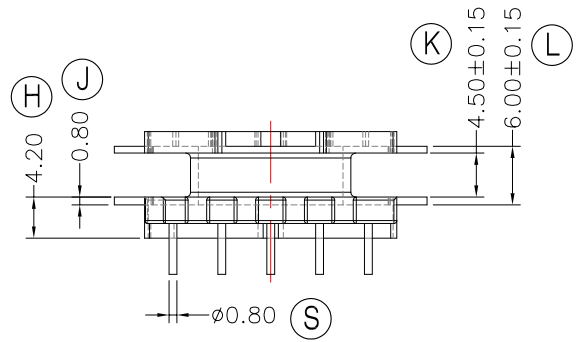
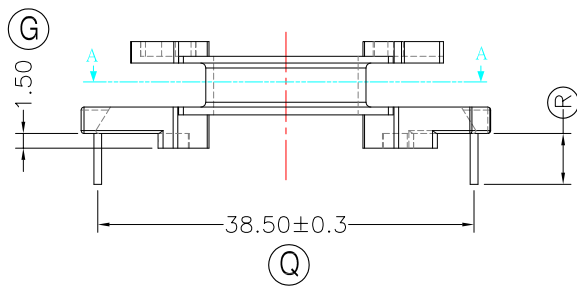
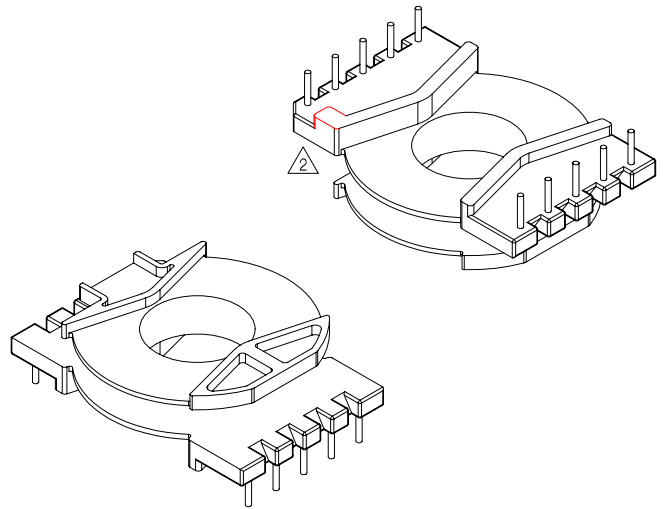
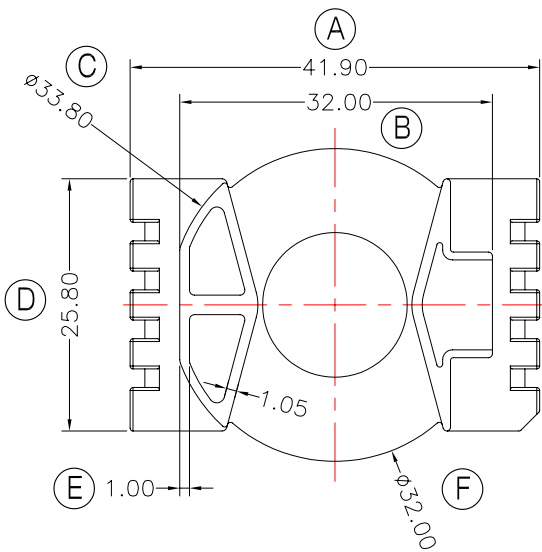


**TRANSFORMER BOBBIN
INDUSTRIAL CO.,LTD.**

Tel : 86-769-88789999 Fax : 86-769-88789989
http:// tbi-tw.com e-mail : tb6688@ms46.hinet.net

REVISIONS

REV	SYM	DRAFTER	CHECKER	DATE
1		X.H.GU	G.F.YANG	08/06/10
2		YAN.TANG	G.F.YANG	09/15/10
3				



Section A-A

DWG NO. PQ38-12.6-10P-TH-A-12

PART NO.	MATERIAL (BOBBIN)	MATERIAL (TERMINAL)	TERMINAL (PLATING)	PIN ALLOCATION	NOTE
TBI-216-14011.1206	PM-9820	CP WIRE	Sn	ALL PIN (R) =5.2±0.2	S
TBI-216-14011.1216	PM-9820	CP WIRE	Sn	CUT PIN #4 (R) =5.2±0.2	H
TBI-216-14011.1226	PM-9820	CP WIRE	Sn	ALL PIN (R) =5.5±0.2	
TBI-216-14011.1236	PM-9820	CP WIRE	Sn	ALL PIN (R) =6.0±0.2	
TBI-216-14011.1246	PM-9820	CP WIRE	Sn	CUT PIN #3 (R) =5.2±0.2	

TOLERANCE: 0<L<=4:±0.1 4<L<=16:±0.2 16<L<=63:±0.3

UNIT : m / m

SCALE 1 : 1

Finish: 1. PB wire Immersion Sn on terminal : Thickness:Sn plating,100,5 μm (200 μ inches) min,Base nickel 0.625 μm (25 μ inches) min.
2. CP wire Immersion Sn on terminal : Thickness:Sn plating,100,5 μm (200 μ inches) min.
3. Coplanarity deviation: 0.10 mm (0.004 inches) max.

REV 2