

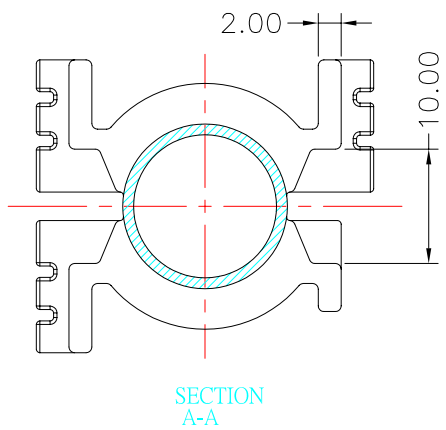
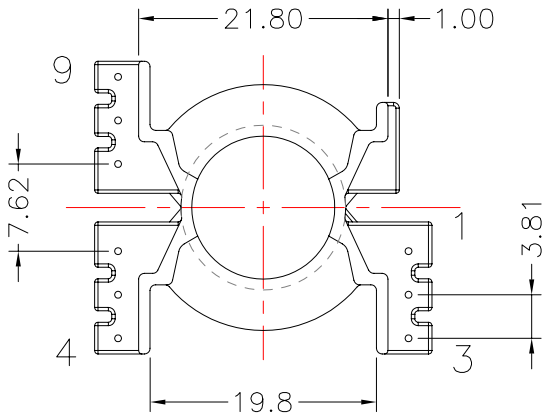
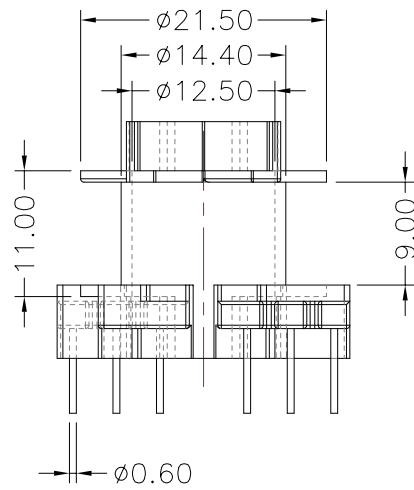
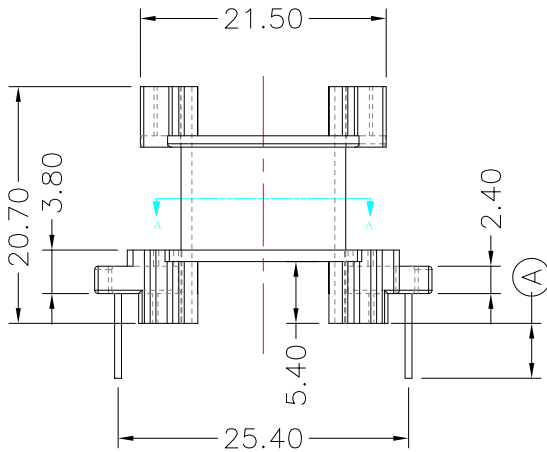
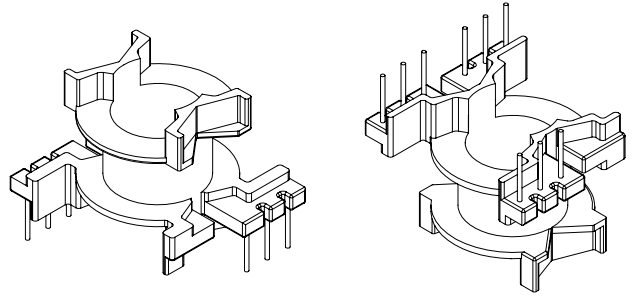
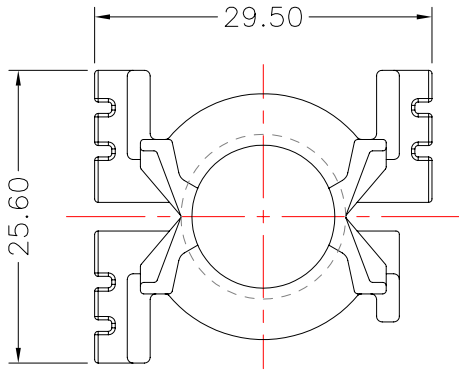


TRANSFORMER BOBBIN  
INDUSTRIAL CO.,LTD.

Tel : 86-769-88789999 Fax : 86-769-88789998  
http:// tbi-tw.com e-mail : tb6688@ms46.hinet.net

REVISIONS

REV	SYM	DRAFTER	CHECKER	DATE
①		X.H.GU	G.F.YANG	12/25/08
②		G.F.YANG	W.H.HSU	01/10/09
③		YAN.TANG	G.F.YANG	12/15/09



DWG NO. PQ2620-9P-TH-3.81-C-12

PART NO. MATERIAL (BOBBIN) MATERIAL (TERMINAL) TERMINAL (PLATING) PIN ALLOCATION NOTE

TBI-216-04031.1206	PM-9820	C.P WIRE	Sn	ALL PIN(A)=4.8±0.2 ③	
TBI-216-04031.1216	PM-9820	C.P WIRE	Sn	CUT PIN#4,6,8(A)=5.0±0.2 ③	
③ TBI-216-04031.1226	PM-9820	C.P WIRE	Sn	CUT PIN#4,6,8(A)=3.0±0.2	

TOLERANCE: .X±0.15 .XX±0.10 .XXX±0.05

UNIT : m / m

SCALE 3 : 2

Finish: 1. Pb wire Immersion Sn on terminal : Thickness:Sn plating,100,5 μm (200 μ inches) min,Base nickel 0.625 μm (25 μ inches) min.  
2. CP wire Immersion Sn on terminal : Thickness:Sn plating,100,5 μm (200 μ inches) min.  
3. Coplanarity deviation: 0.10 mm (0.004 inches) max.

REV 3