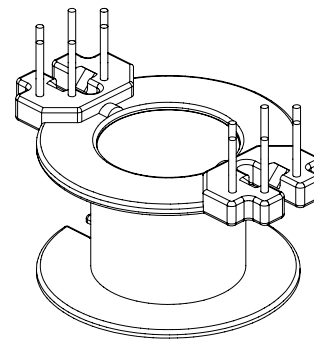
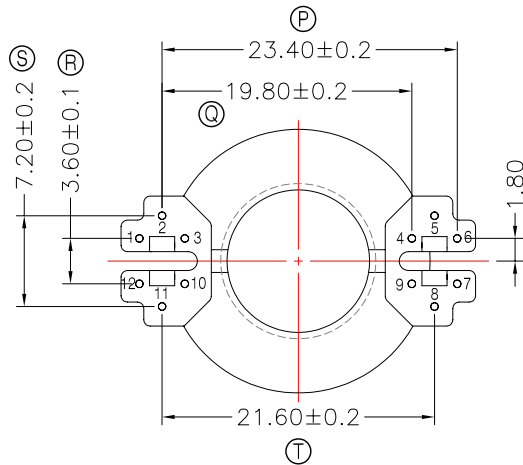
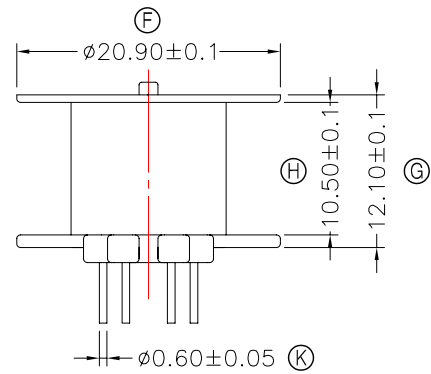
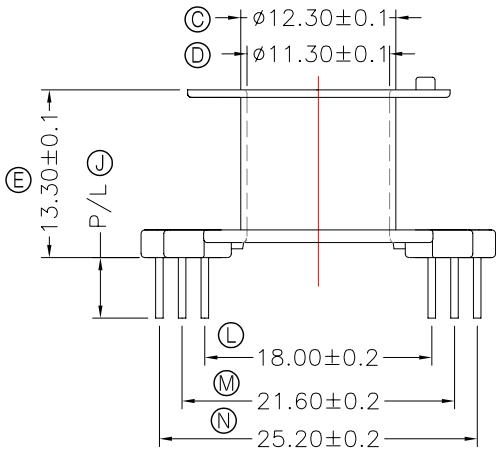
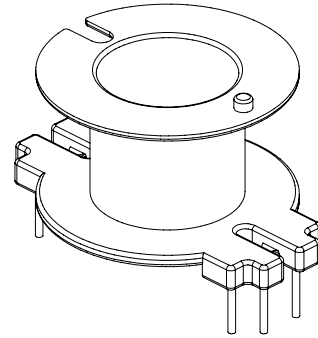
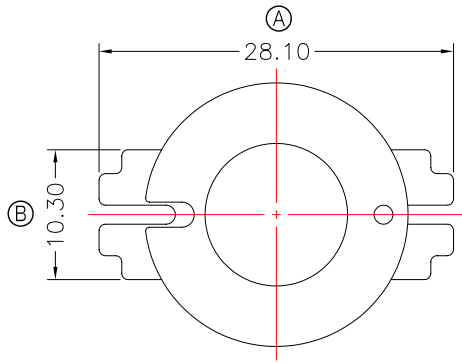




TRANSFORMER BOBBIN
INDUSTRIAL CO.,LTD.

Tel : 86-769-88789999 Fax : 86-769-88789989
http:// tbi-tw.com e-mail : tb6688@ms46.hinet.net

REVISIONS				
REV	SYM	DRAFTER	CHECKER	DATE
①		X.H.GU	G.F.YANG	10/06/16
②				
③				



DWG NO. RM10-12P-TH-F1-11

PART NO.	MATERIAL (BOBBIN)	MATERIAL (TERMINAL)	TERMINAL (PLATING)	PIN ALLOCATION	NOTE
TBI-208-04611.1106	PM-9630	CP WIRE	Sn	ALL PIN P/L=4.8±0.3	070-5680 H
TBI-208-04611.1116	PM-9630	CP WIRE	Sn	CUT PIN 1,3,5,7,9,10,12 P/L=4.8±0.3	070-6593
TBI-208-04611.1126	PM-9630	CP WIRE	Sn	ALL PIN P/L=5.3±0.3	070-6845

TOLERANCE: 0<L<=4:±0.1 4<L<=16:±0.2 16<L<=63:±0.3 UNIT : m / m SCALE 1 : 1

Finish: 1. PB wire Immersion Sn on terminal : Thickness:Sn plating,100%,5 μm (200 μ inches) min,Base nickel 0.625 μm (25 μ inches) min.
2. CP wire Immersion Sn on terminal : Thickness:Sn plating,100%,5 μm (200 μ inches) min.
3. Coplanarity deviation: 0.10 mm (0.004 inches) max.

REV 1