

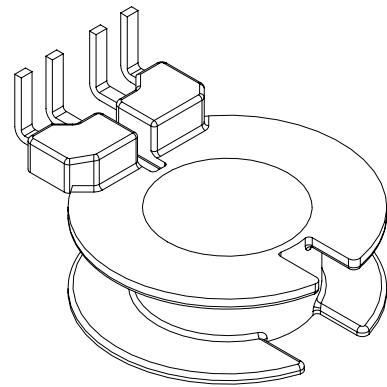
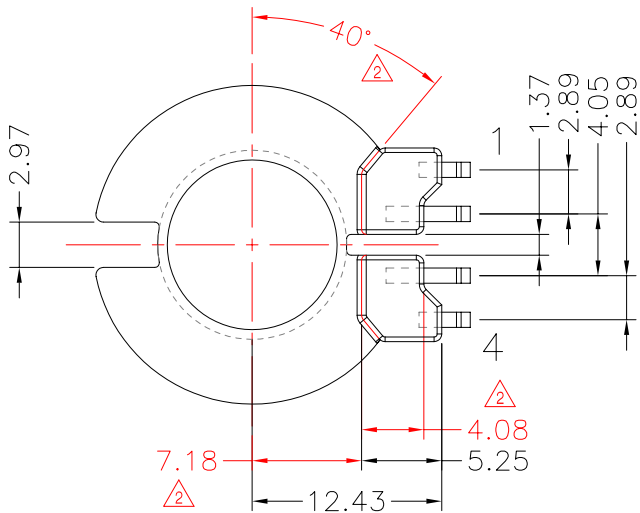
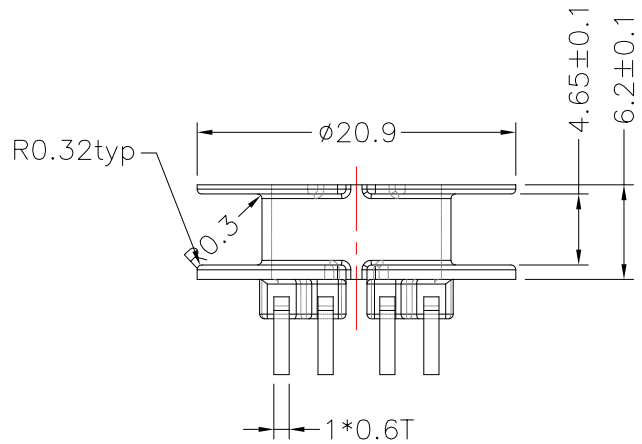
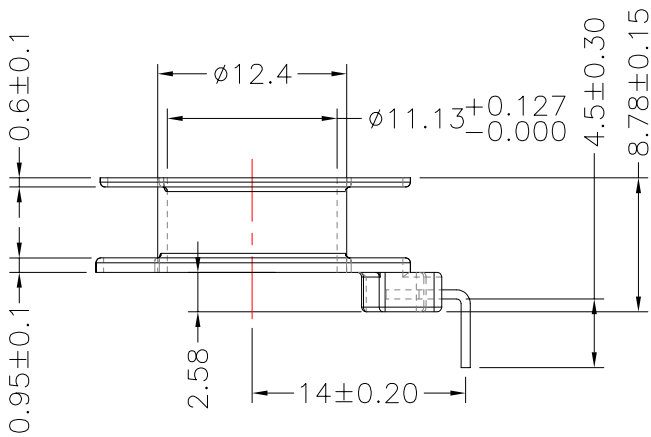
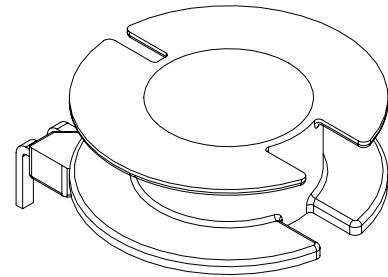
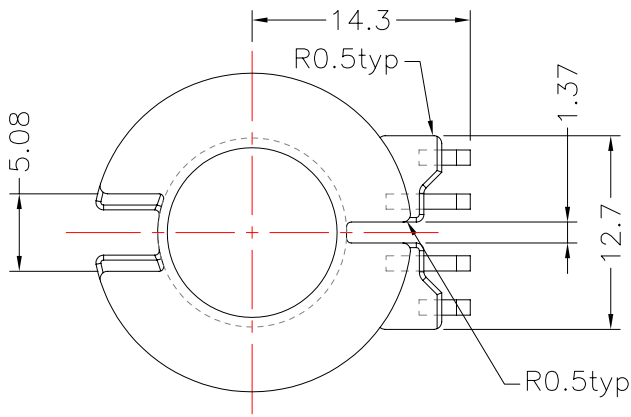


**TRANSFORMER BOBBIN
INDUSTRIAL CO.,LTD.**

Tel : 86-769-88789999 Fax : 86-769-88789989
 http:// tbi-tw.com e-mail : tb6688@ms46.hinet.net

REVISIONS

| REV | SYM | DRAFTER | CHECKER | DATE |
|-----|-----|----------|----------|----------|
| ① | | S.Y.TANG | G.F.YANG | 04/17/09 |
| ② | | S.Y.TANG | G.F.YANG | 07/15/09 |
| ③ | | | | |

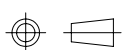


DWG NO. RM10-11-4P-THT-1B-11

| PART NO. | MATERIAL (BOBBIN) | MATERIAL (TERMINAL) | TERMINAL (PLATING) | PIN ALLOCATION | NOTE |
|--------------------|-------------------|---------------------|--------------------|----------------|------|
| TBI-208-04121.1106 | PM-9630 | CP WIRE | Sn | ALL PIN | |

GENERAL TOLERANCES

| LENGTH(mm) | X.X | X.XX | LENGTH(mm) | X.X | X.XX |
|------------|-------|-------|------------|------|-------|
| UNDER 5 | ±0.20 | ±0.10 | ANGLE | ±1° | ±0.5° |
| 5-15 | ±0.25 | ±0.15 | RADIUS | ±10% | ±5% |
| 15-40 | ±0.35 | ±0.20 | | | |



UNIT : m/m

SCALE 2:1

Finish: 1. PB wire Immersion Sn on terminal : Thickness:Sn plating,100,5 μm (200 μ inches) min,Base nickel 0.625 μm (25 μ inches) min.
 2. CP wire Immersion Sn on terminal : Thickness:Sn plating,100,5 μm (200 μ inches) min.
 3. Coplanarity deviation: 0.10 mm (0.004 inches) max.

REV 2