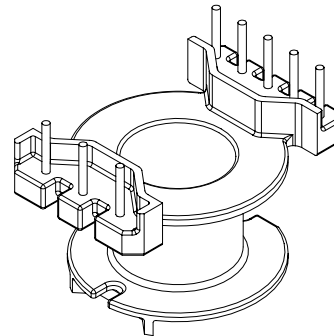
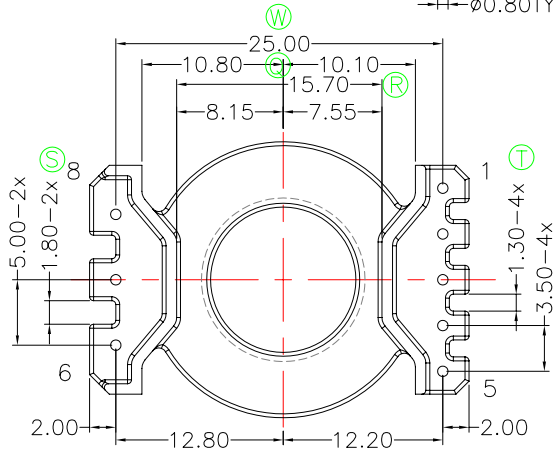
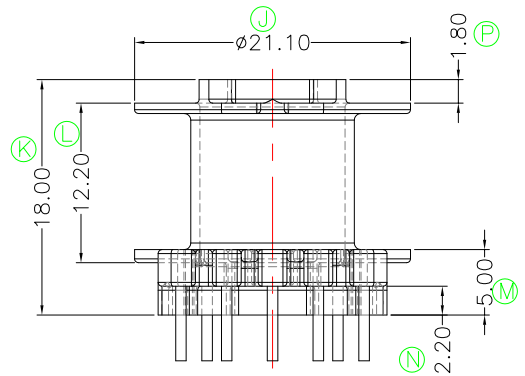
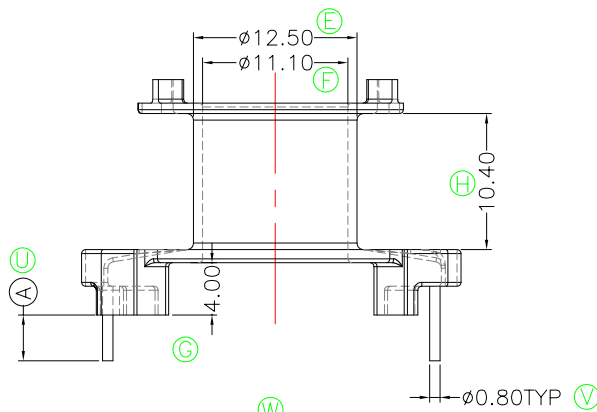
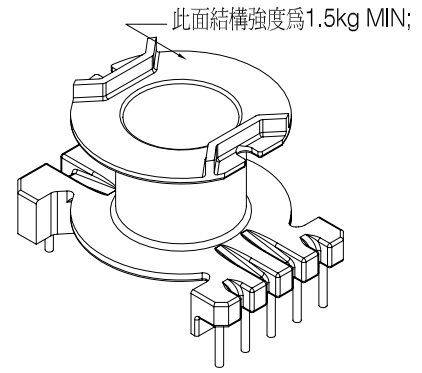
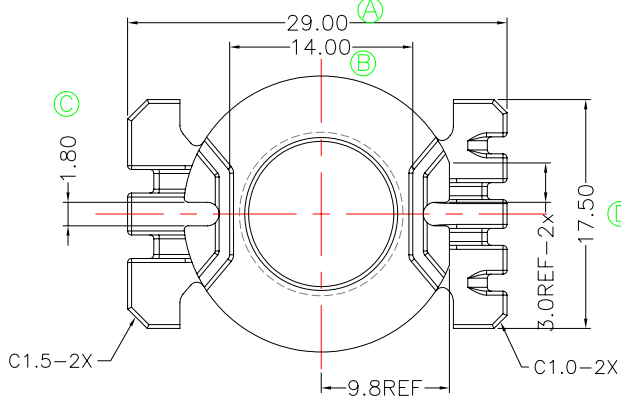




TRANSFORMER BOBBIN INDUSTRIAL CO.,LTD.

Tel : 86-769-88789999 Fax : 86-769-88789989
 http:// tbi-tw.com e-mail : tb6688@ms46.hinet.net

REVISIONS				
REV	SYM	DRAFTER	CHECKER	DATE
△		X.H.GU	G.F.YANG	04/02/09
△		YAN.TANG	G.F.YANG	11/20/09
△				



注: 1. BOBBIN與RM10-18.6 CASE配合使用
 2. 焊錫前拉力: 1.0KG MIN, 焊錫後拉力: 1.5KG MIN

DWG NO.	RM10-18.6-8P-TH-G-12				
PART NO.	MATERIAL (BOBBIN)	MATERIAL (TERMINAL)	TERMINAL (PLATING)	PIN ALLOCATION	NOTE
TBI-208-04071.1206	PM-9820(BK)	CP WIRE	Sn	ALL PIN (A) = 3.5±0.3	
TBI-208-04071.1216	PM-9820(BK)	CP WIRE	Sn	CUT PIN #8 (A) = 2.4±0.2	
TBI-208-04071.1226	PM-9820(BK)	CP WIRE	Sn	CUT PIN #8 (A) = 3.5±0.2 △	
TBI-208-04071.1236	PM-9820(BK)	CP WIRE	Sn	CUT PIN #3,6,8 (A) = 4.0±0.2 △	
TBI-208-04071.1246	PM-9820(BK)	CP WIRE	Sn	CUT PIN #3,6,8 (A) = 2.9±0.2	
TBI-208-04071.1256	PM-9820(BK)	CP WIRE	Sn	CUT PIN #6 (A) = 4.0±0.3	
TBI-208-04071.1266	PM-9820(BK)	CP WIRE	Sn	CUT PIN #8 (A) = 5.0±0.2	
TBI-208-04071.1276	PM-9820(BK)	CP WIRE	Sn	CUT PIN #3,8 (A) = 4.0±0.2	
TBI-208-04071.1286	PM-9820(BK)	CP WIRE	Sn	CUT PIN #1,3,5,7 (A) = 4.0±0.2	
TBI-208-04071.1296	PM-9820(BK)	CP WIRE	Sn	CUT PIN #3,6 (A) = 3.5±0.2	
TBI-208-04071.12A6	PM-9820(BK)	CP WIRE	Sn	CUT PIN #8 (A) = 3.2±0.2	
TBI-208-04071.12B6	PM-9820(BK)	CP WIRE	Sn	CUT PIN #6,7,8 (A) = 5.0±0.5	
TBI-208-04071.12C6	PM-9820(BK)	CP WIRE	Sn	CUT PIN #3,8 (A) = 3.5±0.2	
TBI-208-04071.12D6	PM-9820(BK)	CP WIRE	Sn	CUT PIN #3,8 (A) = 2.6±0.2	

TOLERANCE: 0<L<=4:±0.1 4<L<=16:±0.2 16<L<=63:±0.3 UNIT : m / m SCALE 1 : 1

Finish: 1. PB wire Immersion Sn on terminal : Thickness:Sn plating,100,5 μm (200 μ inches) min,Base nickel 0.625 μm (25 μ inches) min.
 2. CP wire Immersion Sn on terminal : Thickness:Sn plating,100,5 μm (200 μ inches) min.
 3. Coplanarity deviation: 0.10 mm (0.004 inches) max.

REV 2