

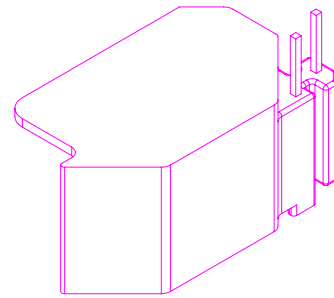
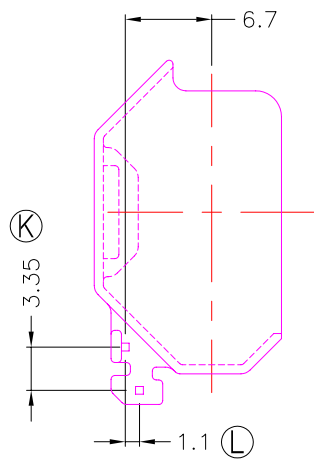
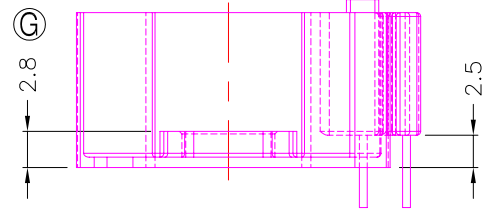
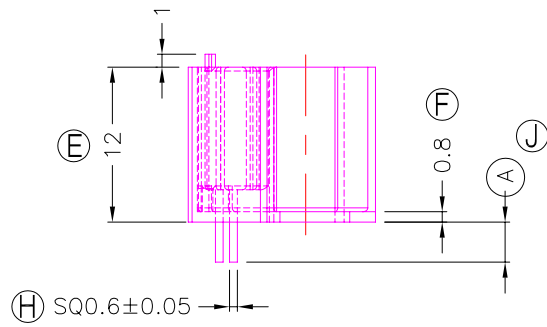
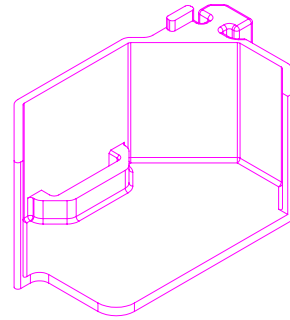
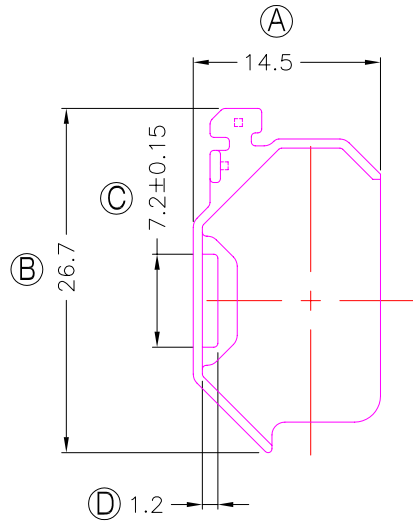


TRANSFORMER BOBBIN
INDUSTRIAL CO.,LTD.

Tel : 86-769-88789999 Fax : 86-769-88789989
http:// tbi-tw.com e-mail : tb6688@ms46.hinet.net

REVISIONS

REV	SYM	DRAFTER	CHECKER	DATE
1		X.H.GU	G.F.YANG	02/19/14
2				
3				



與TBI-208-05361.11XX(RM8-16.7A-6P-TH-C6-11)配套使用;

DWG NO.	RM8-16.7A-2P-CASE-C7-11				
PART NO.	MATERIAL (BOBBIN)	MATERIAL (TERMINAL)	TERMINAL (PLATING)	PIN ALLOCATION	NOTE
TBI-208-05371.1106	PM-9630	CP WIRE	Sn	ALL PIN A=3.1±0.2	S
TBI-208-05371.1116	PM-9630	CP WIRE	Sn	ALL PIN A=4.5±0.2	
TBI-208-05371.1126	PM-9630	CP WIRE	Sn	ALL PIN A=5.0±0.2	
TBI-208-05371.1136	PM-9630	CP WIRE	Sn	ALL PIN A=3.0±0.2	
	TOLERANCE: 0<L<=4:±0.1 4<L<=16:±0.2 16<L<=63:±0.3			UNIT : m / m	SCALE 1 : 1

Finish: 1. PB wire Immersion Sn on terminal : Thickness:Sn plating,100%,5 μm (200 μ inches) min,Base nickel 0.625 μm (25 μ inches) min.
2. CP WIRE Immersion Sn on terminal : Thickness:Sn plating,100%,5 μm (200 μ inches) min.
3. Coplanarity deviation: 0.10 mm (0.004 inches) max.

REV 1