

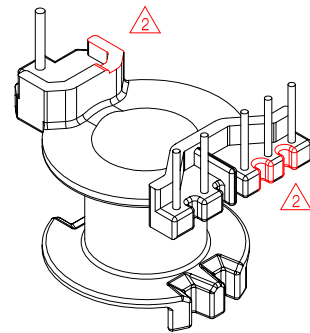
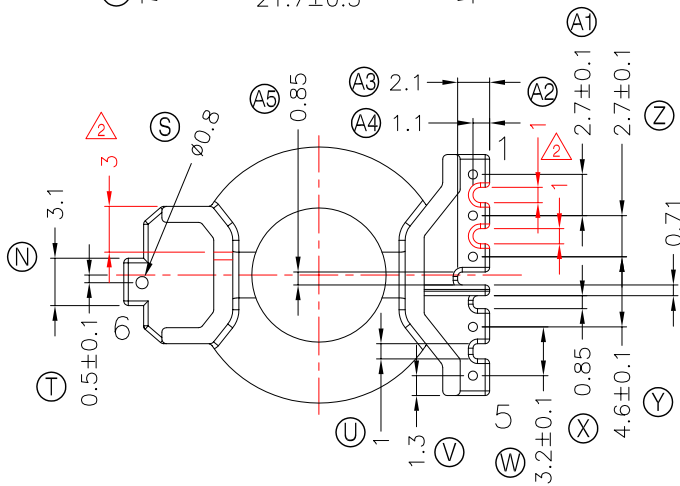
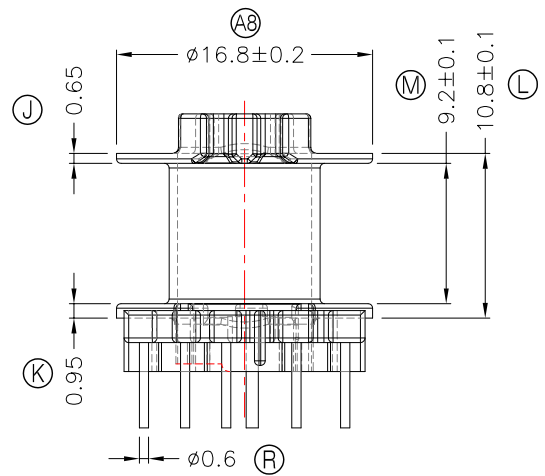
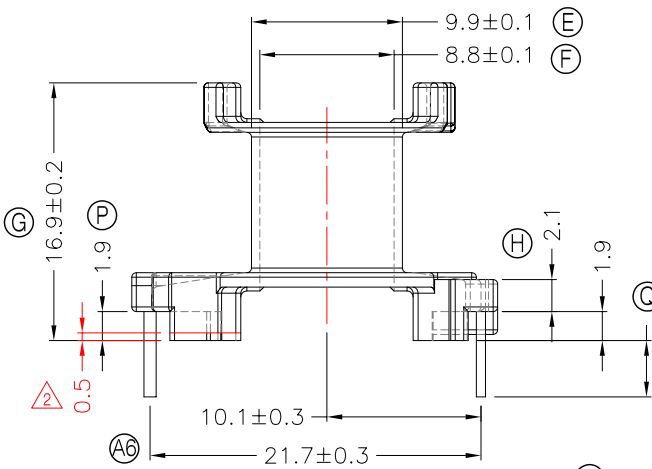
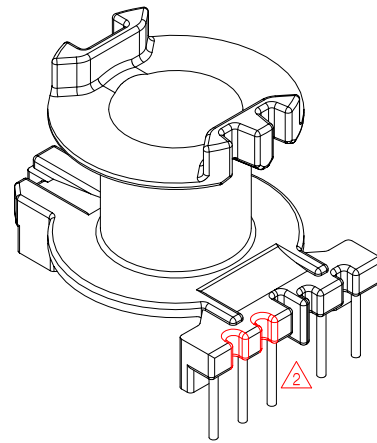
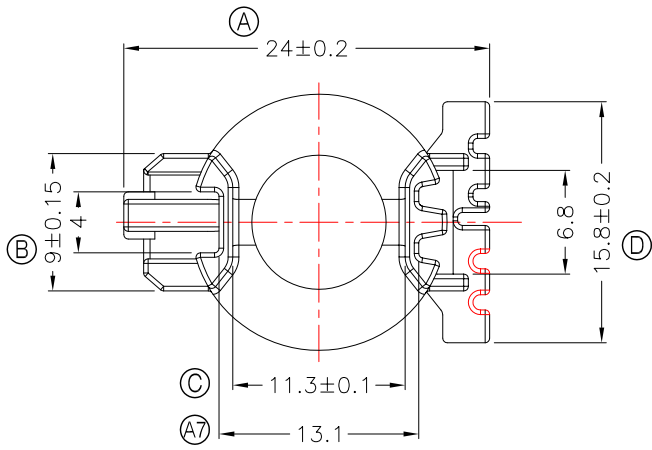


TRANSFORMER BOBBIN INDUSTRIAL CO.,LTD.

Tel : 86-769-88789999 Fax : 86-769-88789989
 http:// tbi-tw.com e-mail : tb6688@ms46.hinet.net

REVISIONS

REV	SYM	DRAFTER	CHECKER	DATE
1		X.H.GU	G.F.YANG	03/13/12
2		G.F.YANG	W.H.HSU	05/07/12
3				



注: 1.任意一點強度須1.5kg MIN
 2.PIN拉力須焊前0.8Kg MIN;焊后1.2Kg MIN.

DWG NO.	RM8-6P-TH-B1-11				
PART NO.	MATERIAL (BOBBIN)	MATERIAL (TERMINAL)	TERMINAL (PLATING)	PIN ALLOCATION	NOTE
TBI-208-05211.1106	PM-9630	CP WIRE	Sn	ALL PIN Q = 3.7+/-0.2	
TBI-208-05211.1116	PM-9630	CP WIRE	Sn	ALL PIN Q = 2.6+/-0.2	
TOLERANCE: 0<L<=4:±0.1 4<L<=16:±0.2 16<L<=63:±0.3					
				UNIT : m / m	SCALE 1 : 1

Finish: 1. PB wire Immersion Sn on terminal : Thickness:Sn plating,100,5 μm (200 μ inches) min,Base nickel 0.625 μm (25 μ inches) min.
 2. CP WIRE Immersion Sn on terminal : Thickness:Sn plating,100,5 μm (200 μ inches) min.
 3. Coplanarity deviation: 0.10 mm (0.004 inches) max.

REV	2
-----	---