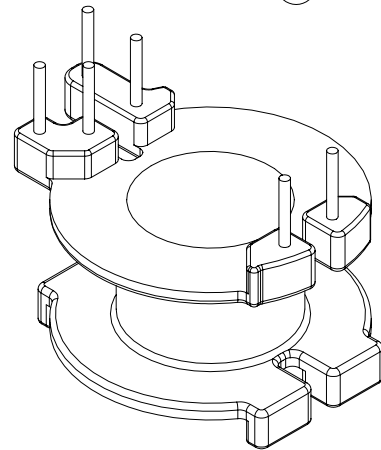
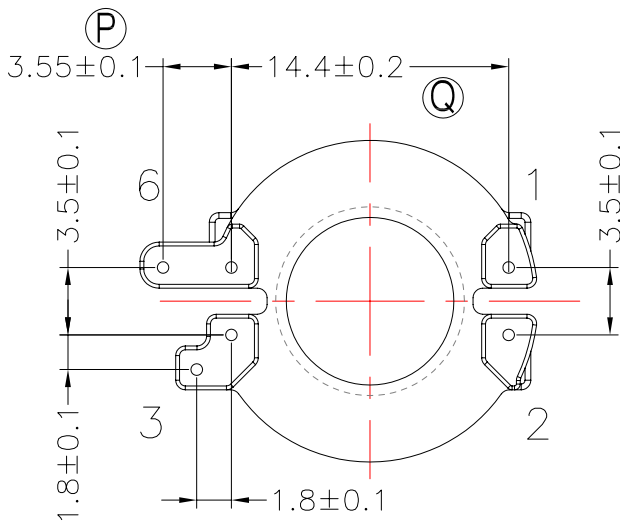
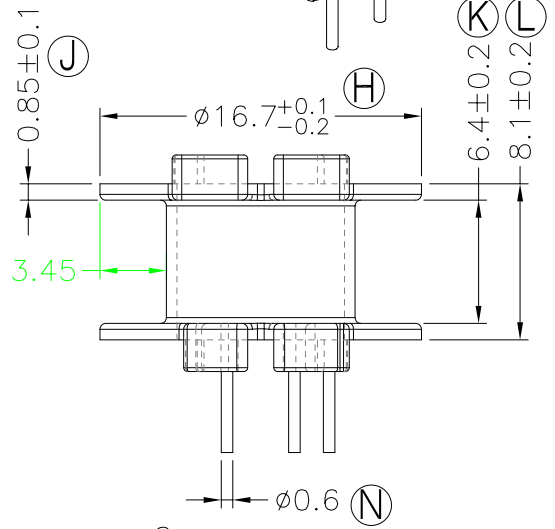
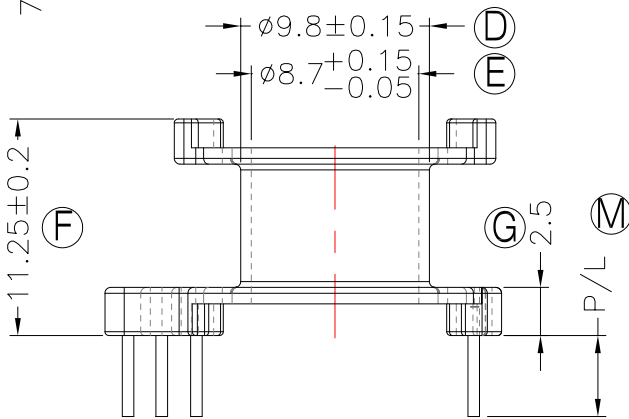
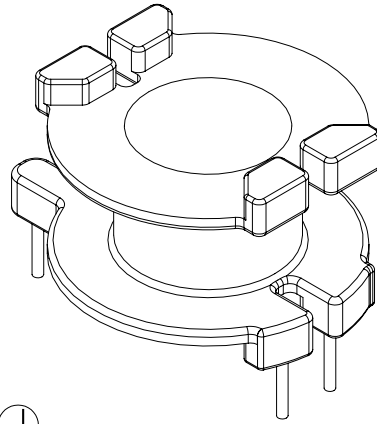
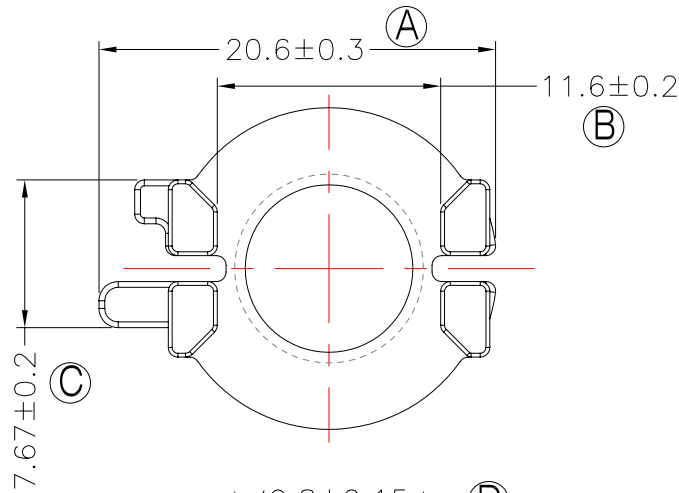




**TRANSFORMER BOBBIN INDUSTRIAL CO.,LTD.**

Tel : 86-769-88789999 Fax : 86-769-88789989  
 http:// tbi-tw.com e-mail : tb6688@ms46.hinet.net

REVISIONS				
REV	SYM	DRAFTER	CHECKER	DATE
△1		X.X.YUAN	G.F.YANG	03/23/16
△2				
△3				



NOTE:  
 WINDING SPACE: 6.4mm\*3.45mm=22.08mm<sup>2</sup>

DWG NO.	RM8-14A-6P-TH-A4-17				
PART NO.	MATERIAL (BOBBIN)	MATERIAL (TERMINAL)	TERMINAL (PLATING)	PIN ALLOCATION	NOTE
TBI-208-05141.1706	PM-9823	CP WIRE	Sn	ALL PIN P/L=4.2±0.2	S
TBI-208-05141.1716	PM-9823	CP WIRE	Sn	NO PIN#1,2 P/L=4.2±0.2	
TOLERANCE: 0<L<=4: ±0.1 4<L<=16: ±0.2 16<L<=63: ±0.3					
			UNIT : m / m	SCALE 1 : 1	

Finish: 1. PB wire Immersion Sn on terminal : Thickness:Sn plating,100%,5 μm (200 μ inches) min,Base nickel 0.625 μm (25 μ inches) min.  
 2. CP wire Immersion Sn on terminal : Thickness:Sn plating,100%,5 μm (200 μ inches) min.  
 3. Coplanarity deviation: 0.10 mm (0.004 inches) max.

REV	1
-----	---