

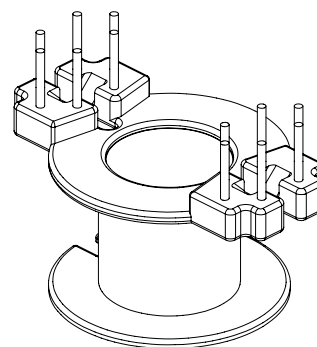
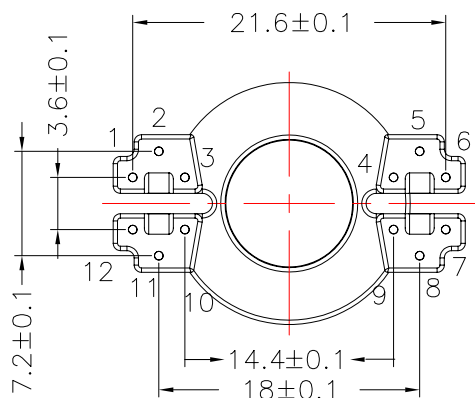
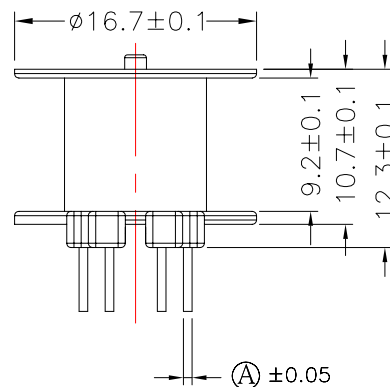
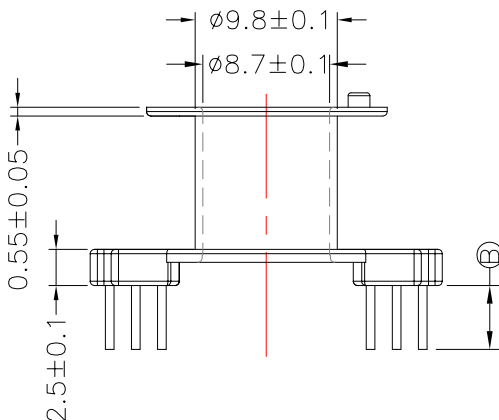
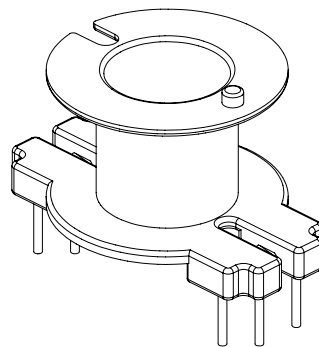
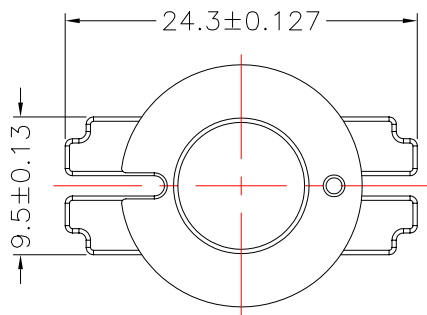


TRANSFORMER BOBBIN INDUSTRIAL CO.,LTD.

Tel : 86-769-88789999 Fax : 86-769-88789989
 http:// tbi-tw.com e-mail : tb6688@ms46.hinet.net

REVISIONS

REV	SYM	DRAFTER	CHECKER	DATE
①		YAN.TANG	G.F.YANG	11/02/09
②				
③				



DWG NO. RM8-12P-TH-A-12

PART NO.	MATERIAL (BOBBIN)	MATERIAL (TERMINAL)	TERMINAL (PLATING)	PIN ALLOCATION	NOTE
TBI-208-05011.1200	PM-9820			NO PIN	
TBI-208-05011.1206	PM-9820	CP WIRE	Sn	ALL PIN A=∅0.6 B=4.4±0.3 pin cut No.3,4,6,7,9,10,12	
TBI-208-05011.1216	PM-9820	CP WIRE	Sn	A=∅0.6 B=5.5±0.3 pin cut No.1,3,4,9,10,12	
TBI-208-05011.1226	PM-9820	CP WIRE	Sn	A=∅0.6 B=4.4±0.3 pin cut No.3,4,9,10	
TBI-208-05011.1236	PM-9820	CP WIRE	Sn	A=∅0.6 B=4.4±0.3 pin cut No.1,3,4,6,7,9,10,12	
TBI-208-05011.1246	PM-9820	CP WIRE	Sn	A=∅0.6 B=7±0.3 pin cut No.3,4,9,10	
TBI-208-05011.1256	PM-9820	CP WIRE	Sn	A=SQ0.5 B=5.5±0.3 pin cut No.3,4,9,10	
TBI-208-05011.1266	PM-9820	CP WIRE	Sn	A=SQ0.5 B=6.2±0.3 pin cut No.3,4,9,10	
TBI-208-05011.1276	PM-9820	CP WIRE	Sn	ALL PIN A=∅0.6 B=5.5±0.3	
TBI-208-05011.1286	PM-9820	CP WIRE	Sn	CUT PIN 1,2,5,6,7,8,11,12 A=∅0.6 B=4.5±0.3	
TBI-208-05011.1296	PM-9820	CP WIRE	Sn	CUT PIN 2,3,4,6,7,9,10,11 A=∅0.6 B=4.5±0.3	
TBI-208-05011.12A6	PM-9820	CP WIRE	Sn	ALL PIN A=SQ0.5 B=6.0±0.3	

TOLERANCE: .X±0.15 .XX±0.10 .XXX±0.05 UNIT : m / m SCALE 2 : 1

Finish: 1. PB wire Immersion Sn on terminal : Thickness:Sn plating,100,5 μm (200 μ inches) min,Base nickel 0.625 μm (25 μ inches) min.
 2. CP WIRE Immersion Sn on terminal : Thickness:Sn plating,100,5 μm (200 μ inches) min.
 3. Coplanarity deviation: 0.10 mm (0.004 inches)max.

REV 1