

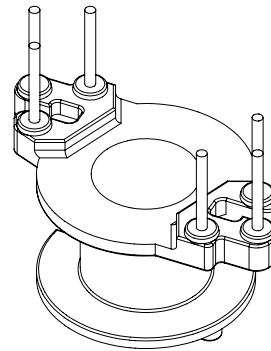
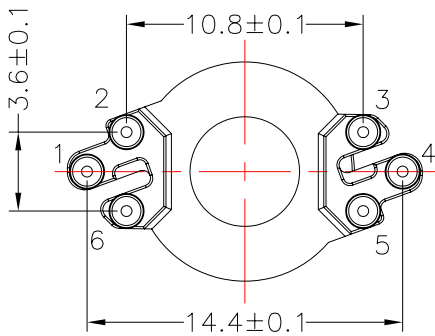
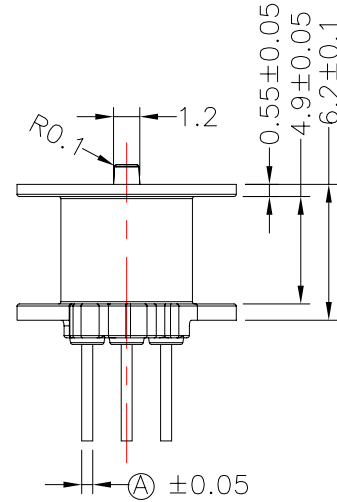
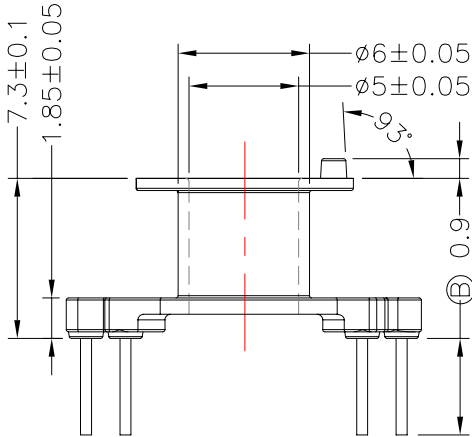
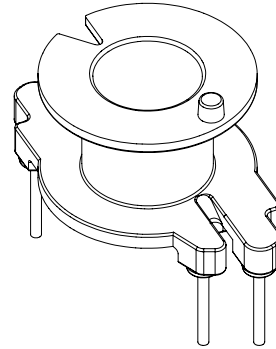
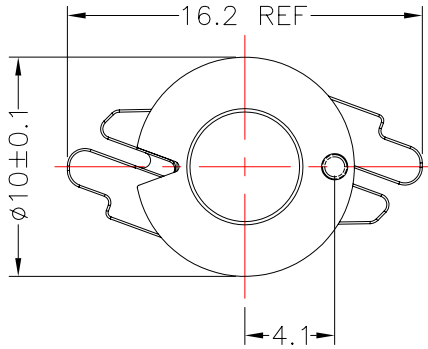


**TRANSFORMER BOBBIN  
INDUSTRIAL CO.,LTD.**

Tel : 86-769-88789999 Fax : 86-769-88789989  
http:// tbi-tw.com e-mail : tb6688@ms46.hinet.net

REVISIONS

REV	SYM	DRAFTER	CHECKER	DATE
△9		Y.G.HSU	W.H.HSU	02/07/07
△8		YAN.TANG	W.H.HSU	04/19/07
△1		YAN.TANG	G.F.YANG	11/15/07



DWG NO. RM5-6P-TH-B-1

PART NO.	MATERIAL (BOBBIN)	MATERIAL (TERMINAL)	TERMINAL (PLATING)	PIN ALLOCATION	NOTE
TBI-208-03021.106	PM-9630	CP WIRE	Sn	ALL PIN (A)= $\varnothing$ 0.5(B)=4.4±0.3	
TBI-208-03021.116	PM-9630	CP WIRE	Sn	CUT PIN #1,4 (A)= $\varnothing$ 0.5(B)=4.4±0.3	
TBI-208-03021.126	PM-9630	CP WIRE	Sn	CUT PIN #4 (A)= $\varnothing$ 0.5(B)=4.4±0.3	
TBI-208-03021.136	PM-9630	CP WIRE	Sn	ALL PIN (A)=SQ0.4 (B)=5.0±0.3	
TBI-208-03021.146	PM-9630	CP WIRE	Sn	CUT PIN #1,4 (A)=SQ0.4(B)=4.4±0.3	
TBI-208-03021.156	PM-9630	CP WIRE	Sn	ALL PIN (A)= $\varnothing$ 0.5 (B)=6.0±0.3	
TBI-208-03021.166	PM-9630	CP WIRE	Sn	ALL PIN (A)= $\varnothing$ 0.5 (B)=5.0±0.3	
TBI-208-03021.176	PM-9630	CP WIRE	Sn	CUT PIN #1 (A)= $\varnothing$ 0.5(B)=4.4±0.3	
TBI-208-03021.186	PM-9630	CP WIRE	Sn	ALL PIN (A)= $\varnothing$ 0.5(B)=4.0±0.2	
TBI-208-03021.196	PM-9630	CP WIRE	Sn	CUT PIN #4 (A)= $\varnothing$ 0.5(B)=4.0±0.2	
TBI-208-03021.1A6	PM-9630	CP WIRE	Sn	ALL PIN (A)= $\varnothing$ 0.5(B)=3.5±0.2	

TOLERANCE: .X±0.15 .XX±0.10 .XXX±0.05 UNIT : m / m SCALE 3 : 1

Finish: 1. Pb wire Immersion Sn on terminal : Thickness:Sn plating,100,5 μm (200 μ inches) min,Base nickel 0.625 μm (25 μ inches) min.  
2. CP wire Immersion Sn on terminal : Thickness:Sn plating,100,5 μm (200 μ inches) min.  
3. Coplanarity deviation: 0.10 mm (0.004 inches )max.

REV 11