

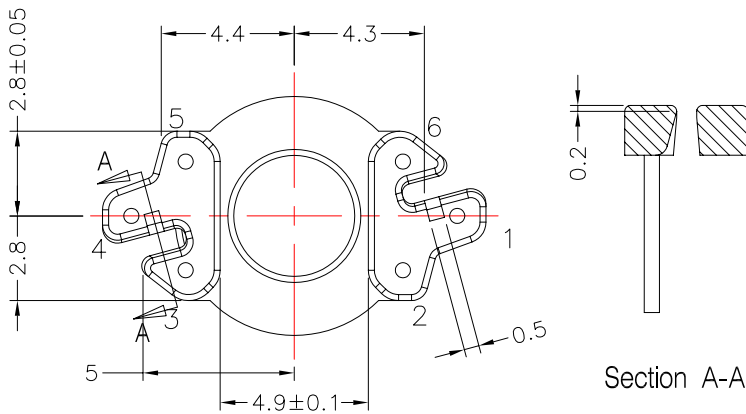
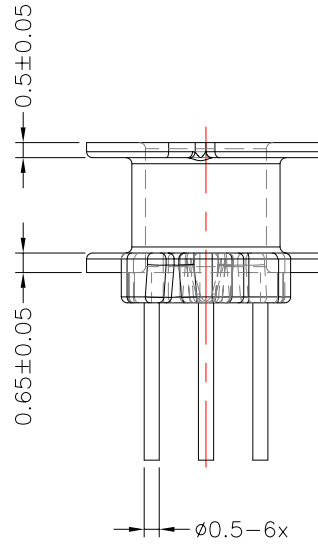
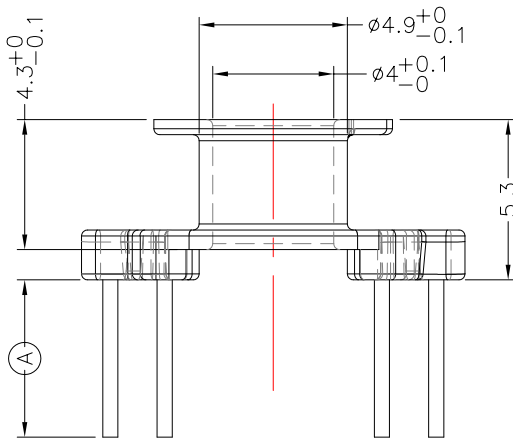
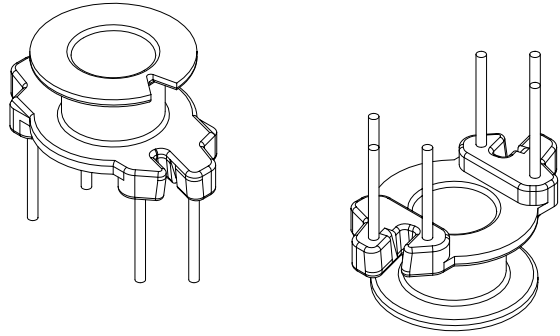
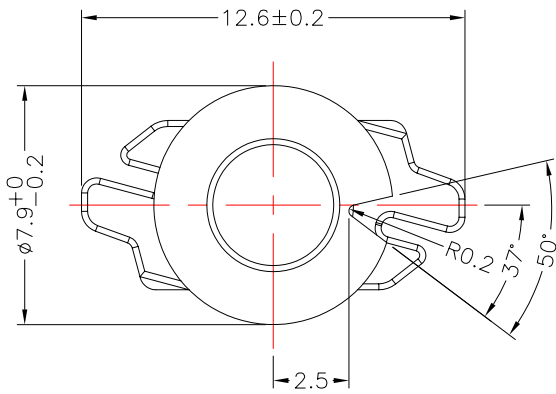


**TRANSFORMER BOBBIN  
INDUSTRIAL CO.,LTD.**

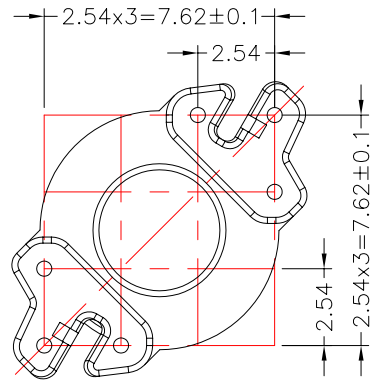
Tel : 86-769-88789999 Fax : 86-769-88789989  
http:// tbi-tw.com e-mail : tb6688@ms46.hinet.net

REVISIONS

REV	SYM	DRAFTER	CHECKER	DATE
1		S.Y.TANG	G.F.YANG	12/14/07
2				
3				



Section A-A



Note : 拉力 1Kg MIN

DWG NO.	RM4LP-6P-TH-C-11				
PART NO.	MATERIAL (BOBBIN)	MATERIAL (TERMINAL)	TERMINAL (PLATING)	PIN ALLOCATION	NOTE
TBI-208-07031.1106	PM-9630	C,P WIRE	Sn	ALL PIN (A) =5.2+0/-0.5	
TBI-208-07031.1116	PM-9630	C,P WIRE	Sn	PIN 5 NO (A) =5.2+0/-0.5	
TBI-208-07031.1126	PM-9630	C,P WIRE	Sn	ALL PIN (A) =3.8+0/-0.5	
TOLERANCE: ±0.10				UNIT : m / m	SCALE 4 : 1
Finish:	1. Pb wire Immersion Sn on terminal : Thickness:Sn plating,100,4-6 μm (160-240 μ inches) min,Base nickel 1-3 μm (40-120 μ inches) min. 2. CP wire Immersion Sn on terminal : Thickness:Sn plating,100,4-6 μm (160-240 μ inches) min. 3. Coplanarity deviation: 0.10 mm (0.004 inches) max.				REV 1