

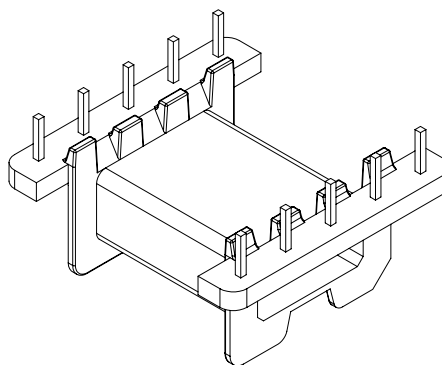
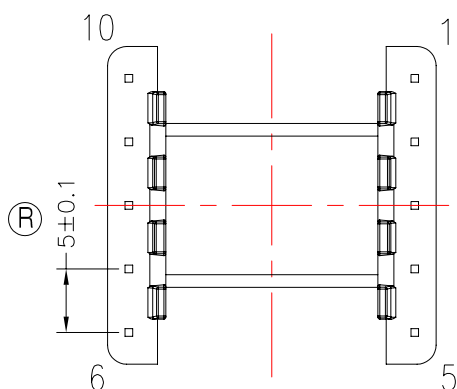
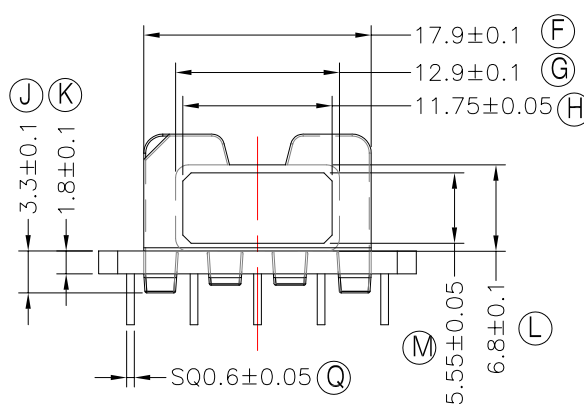
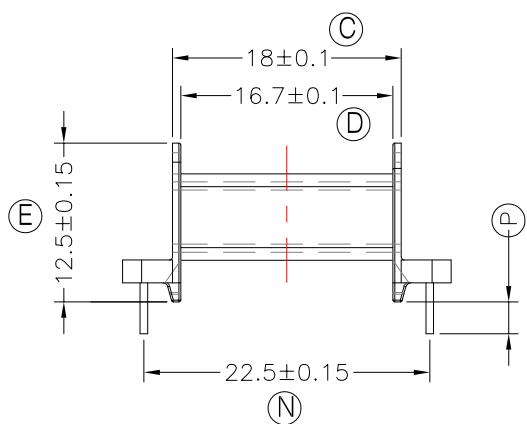
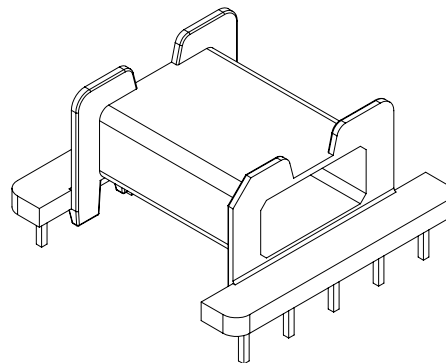
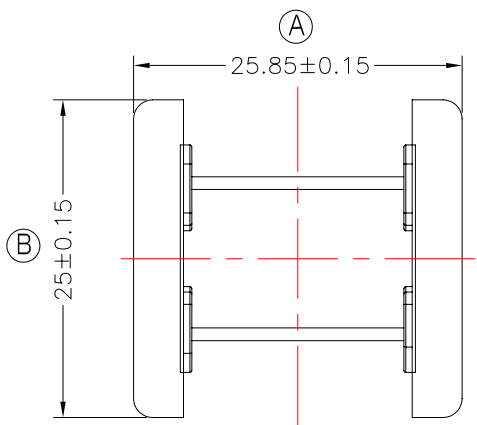


TRANSFORMER BOBBIN  
INDUSTRIAL CO.,LTD.

Tel : 86-769-88789999 Fax : 86-769-88789989  
http:// tbi-tw.com e-mail : tb6688@ms46.hinet.net

REVISIONS

REV	SYM	DRAFTER	CHECKER	DATE
①		H.X.DUAN	W.H.HSU	06/01/10
②				
③				



DWG NO. EFD25-10P-TH-5.0-B5-11

PART NO.	MATERIAL (BOBBIN)	MATERIAL (TERMINAL)	TERMINAL (PLATING)	PIN ALLOCATION	NOTE
TBI-207-02251.1106	PM-9630	CP WIRE	Sn	ALL PIN (P)= $2.5 \pm 0.2$	
TBI-207-02251.1116	PM-9630	CP WIRE	Sn	ALL PIN (P)= $3.05 \pm 0.2$	H
TBI-207-02251.1126	PM-9630	CP WIRE	Sn	CUT PIN #6,7,8,10 (P)= $2.5 \pm 0.2$	

TOLERANCE: .X $\pm 0.15$  .XX $\pm 0.10$  .XXX $\pm 0.05$

UNIT : m / m

SCALE 1 : 1

Finish: 1.PB wire Immersion Sn on terminal : Thickness:Sn plating,100,5 $\mu$ m (200 $\mu$  inches) min,Base nickel 0.625 $\mu$ m (25 $\mu$  inches) min.  
2.CP wire Immersion Sn on terminal : Thickness:Sn plating,100,5 $\mu$ m (200 $\mu$  inches) min.  
3. Coplanarity deviation: 0.10 mm (0.004 inches) max.

REV 1