

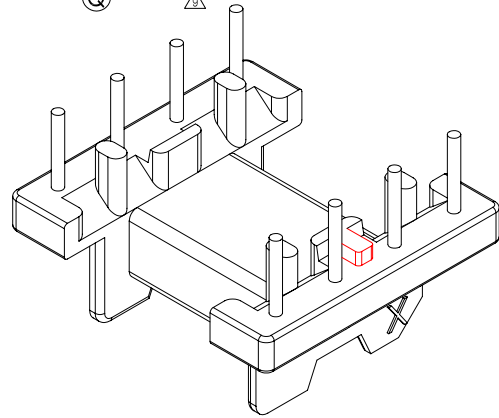
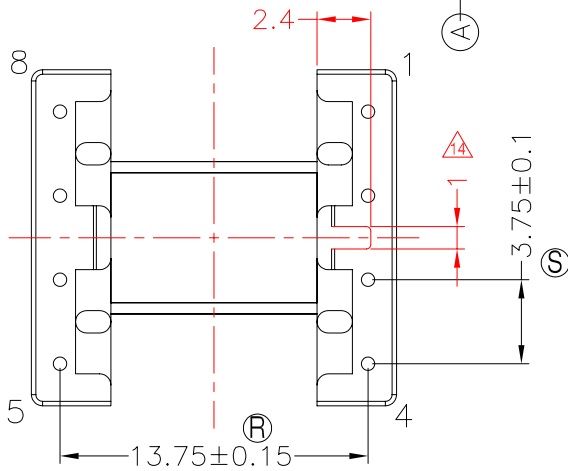
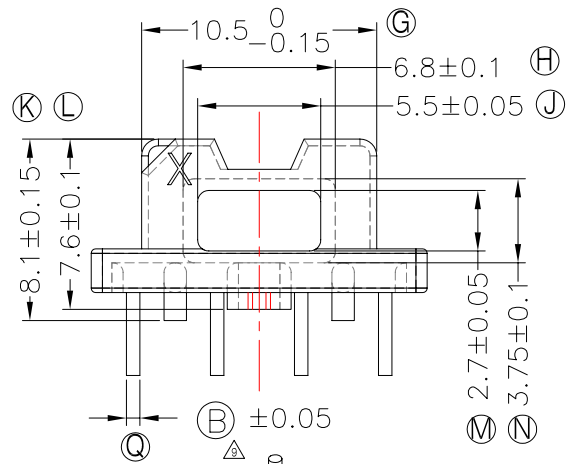
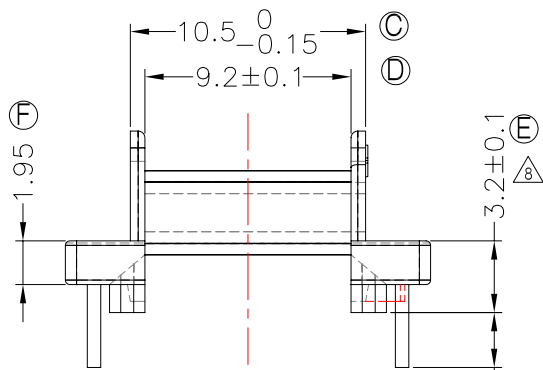
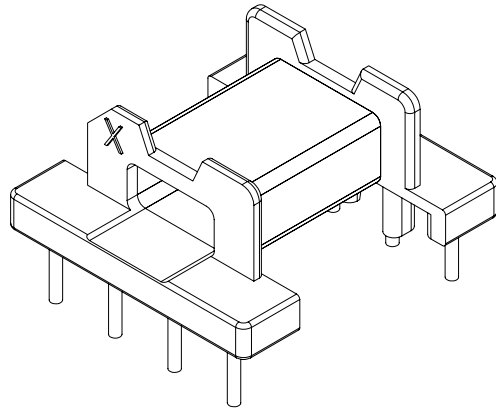
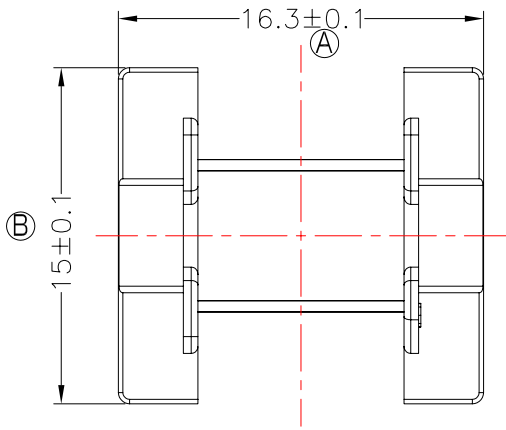


TRANSFORMER BOBBIN
INDUSTRIAL CO.,LTD.

Tel : 86-769-88789999 Fax : 86-769-88789989
http:// tbi-tw.com e-mail : tb6688@ms46.hinet.net

REVISIONS

REV	SYM	DRAFTER	CHECKER	DATE
△2		YAN.TANG	W.H.HSU	09/01/07
△3		YAN.TANG	G.F.YANG	02/22/08
△4		F.LU	G.F.YANG	12/18/10



DWG NO. EFD15-8P-TH-3.75-A-1

PART NO.	MATERIAL (BOBBIN)	MATERIAL (TERMINAL)	TERMINAL (PLATING)	PIN ALLOCATION	NOTE
TBI-207-03011.106	PM-9630	C.P WIRE	Sn	ALL PIN (A)=3.5±0.3 (B)=φ0.6 △	
TBI-207-03011.116	PM-9630	C.P WIRE	Sn	ALL PIN (A)=7.0±0.3 (B)=φ0.6 △	H
TBI-207-03011.126	PM-9630	C.P WIRE	Sn	ALL PIN (A)=3.5±0.3 (B)=SQ 0.485 △	
TBI-207-03011.136	PM-9630	C.P WIRE	Sn	CUT PIN#2,4,5,7 (A)=3.5±0.3 (B)=SQ 0.485 △	
TBI-207-03011.146	PM-9630	C.P WIRE	Sn	CUT PIN#2,3,6,7 (A)=3.5±0.3 (B)=SQ 0.485 △	
TBI-207-03011.156	PM-9630	C.P WIRE	Sn	CUT PIN #4,6,7(A)=7.0±0.3 (B)=φ0.6 △	
TBI-207-03011.166	PM-9630	C.P WIRE	Sn	CUT PIN #4,6,7 PIN1,3(A)=10.2±0.2 PIN2,5,8(A)=4.25±0.25 (B)=φ0.6 △	
TBI-207-03011.176	PM-9630	C.P WIRE	Sn	CUT PIN#2,3,5,6,8(A)=5.0±0.5 (B)=φ0.6	
TBI-207-03011.186	PM-9630	C.P WIRE	Sn	CUT PIN#6,7,8(A)=3.1±0.2 (B)=SQ0.485	
TBI-207-03011.196	PM-9630	C.P WIRE	Sn	CUT PIN#1,2,3,4,5,8(A)=3.5±0.2 (B)=φ0.6	

TOLERANCE: .X±0.15 .XX±0.10 .XXX±0.05 UNIT : m/m SCALE 3 : 1

Finish: 1. Pb wire Immersion Sn on terminal : Thickness:Sn plating,100,5 μm (200 μ inches) min,Base nickel 0.625 μm (25 μ inches) min.
2. CP wire Immersion Sn on terminal : Thickness:Sn plating,100,5 μm (200 μ inches) min.
3. Coplanarity deviation: 0.10 mm (0.004 inches)max.

REV 14