

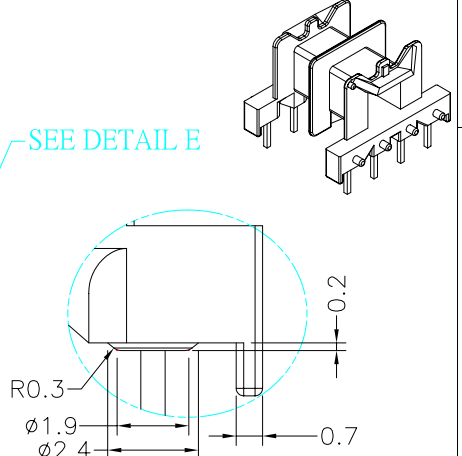
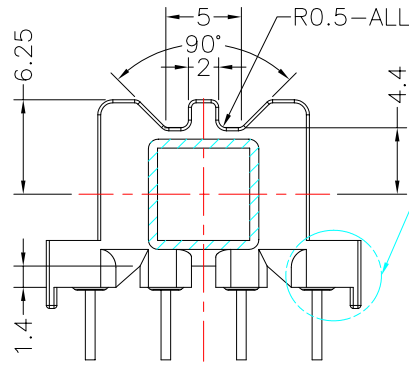
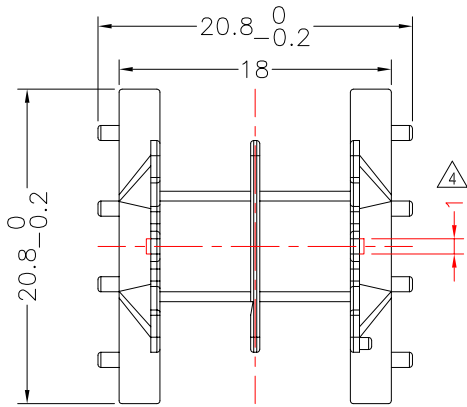


**TRANSFORMER BOBBIN
INDUSTRIAL CO.,LTD.**

Tel : 86-769-88789999 Fax : 86-769-88789989
http:// tbi-tw.com e-mail : tb6688@ms46.hinet.net

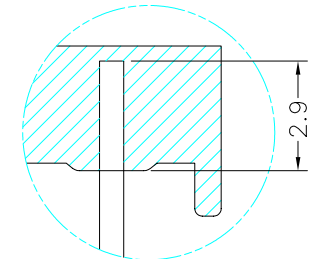
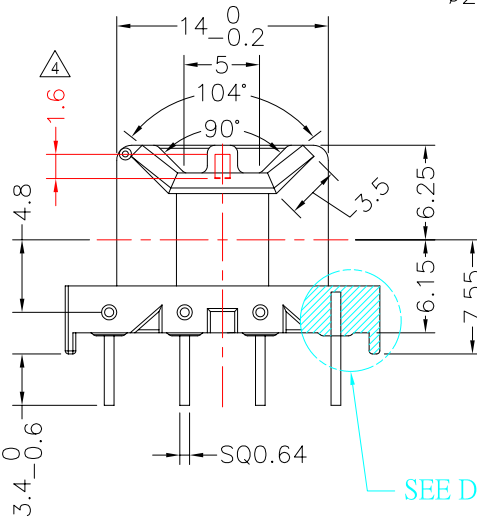
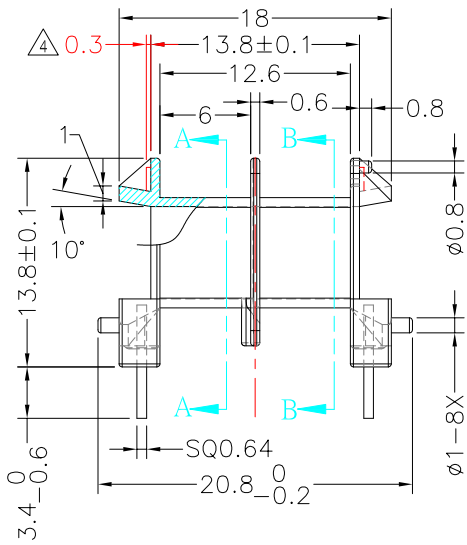
REVISIONS

REV	SYM	DRAFTER	CHECKER	DATE
②		K.F.YANG	W.H.HSU	09/18/07
③		K.F.YANG	W.H.HSU	09/22/07
④		X.H.GU	W.H.HSU	11/10/07



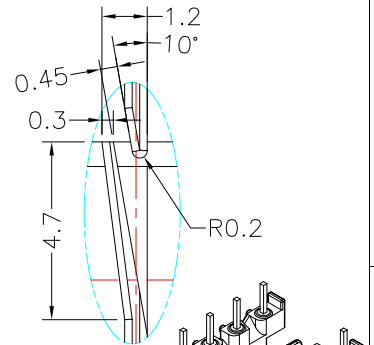
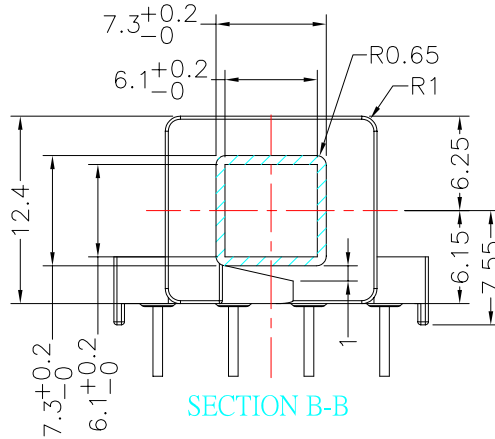
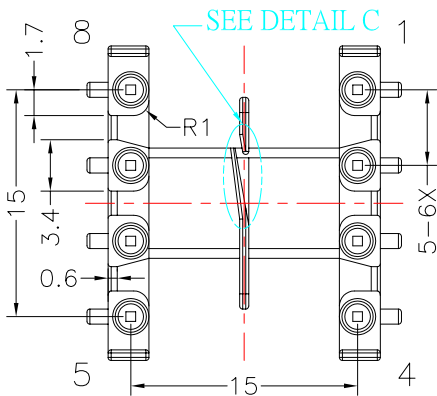
SECTION A-A

SEE DETAIL E
(5:1)



SEE DETAIL D
(5:1)

SEE DETAIL D



SEE DETAIL C
(5:1)

SECTION B-B

DWG NO. EF20-8P-TH-5.0-B4-1-2S

PART NO.	MATERIAL (BOBBIN)	MATERIAL (TERMINAL)	TERMINAL (PLATING)	PIN ALLOCATION	NOTE
TBI-205-03242.106	PM-9820	C.P WIRE	Sn	ALL PIN	
TBI-205-03242.116	PM-9820	C.P WIRE	Sn	PIN 2,5 NO	

TOLERANCE: 0<L<6:±0.1 6<L<30:±0.2 30<L<120:±0.3

UNIT : m / m

SCALE 2 : 1

Finish: 1. Pb wire Immersion Sn on terminal : Thickness:Sn plating,100,5 μm (200 μ inches) min,Base nickel 0.625 μm (25 μ inches) min.
2. CP wire Immersion Sn on terminal : Thickness:Sn plating,100,5 μm (200 μ inches) min.
3. Coplanarity deviation: 0.10 mm (0.004 inches) max.

REV 4