

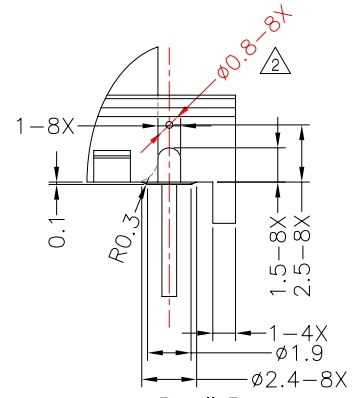
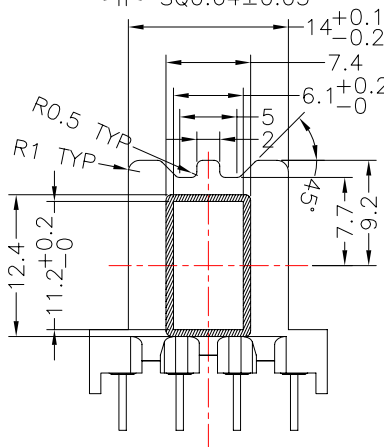
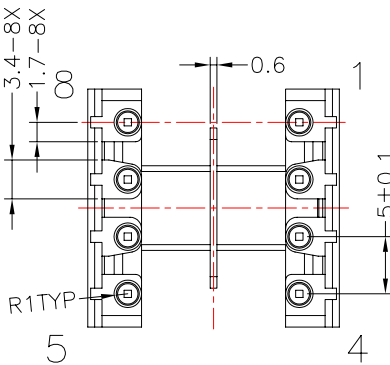
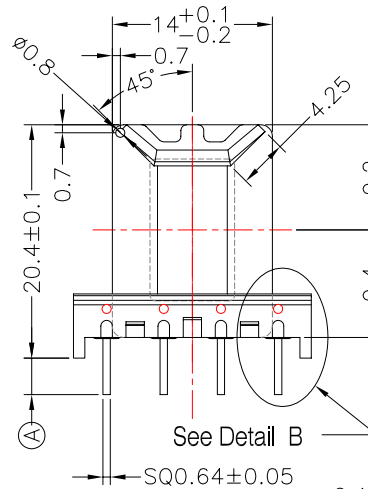
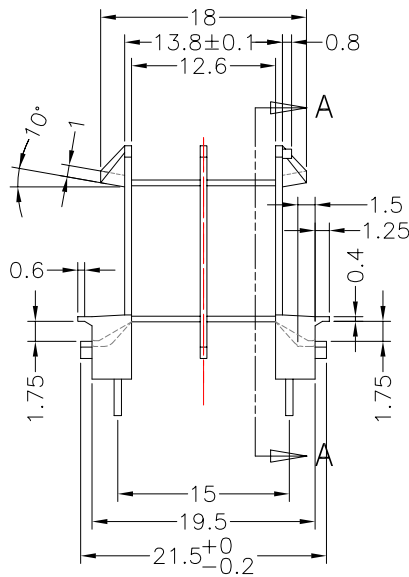
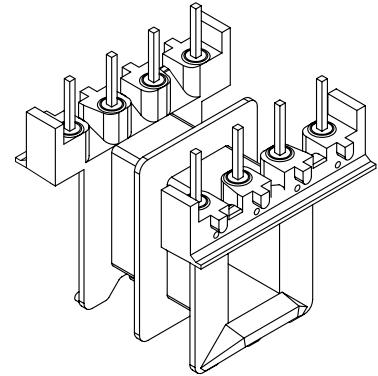
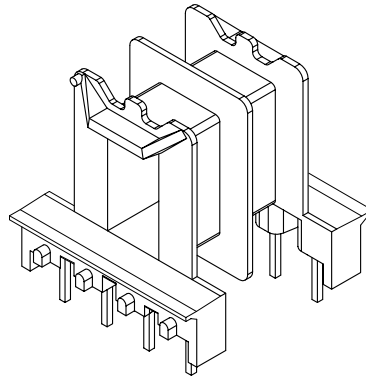
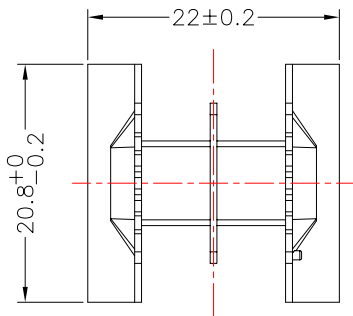


TRANSFORMER BOBBIN
INDUSTRIAL CO.,LTD.

Tel : 86-769-88789999 Fax : 86-769-88789989
http:// tbi-tw.com e-mail : tb6688@ms46.hinet.net

REVISIONS

REV	SYM	DRAFTER	CHECKER	DATE
1		YAN.TANG	G.F.YANG	09/10/09
2		YAN.TANG	G.F.YANG	04/13/10
3				

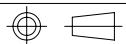


Section A-A

Detail B
Scale 3:1

DWG NO. EF20-8P-TH-5.0-D-91-2S

PART NO.	MATERIAL (BOBBIN)	MATERIAL (TERMINAL)	TERMINAL (PLATING)	PIN ALLOCATION	NOTE
TBI-205-03042.9106	FR-530(WT)	CP WIRE 1/2H	Sn	ALL PIN (A)=3.1±0.2	
TBI-205-03042.9116	FR-530(WT)	CP WIRE 1/2H	Sn	CUT PIN #3 (A)=3.4±0.2	
TBI-205-03042.9126	FR-530(WT)	CP WIRE 1/2H	Sn	CUT PIN #2,3,6,8 (A)=3.4±0.2	
TBI-205-03042.9136	FR-530(WT)	CP WIRE 1/2H	Sn	ALL PIN (A)=3.4±0.2	



TOLERANCE: .X±0.15 .XX±0.10 .XXX±0.05

UNIT : m / m

SCALE 1.5 : 1

Finish: 1. PB wire Immersion Sn on terminal : Thickness:Sn plating,100,5 μm (200 μ inches) min,Base nickel 0.625 μm (25 μ inches) min.
2. CP wire Immersion Sn on terminal : Thickness:Sn plating,100,5 μm (200 μ inches) min.
3. Coplanarity deviation: 0.10 mm (0.004 inches) max.

REV 2