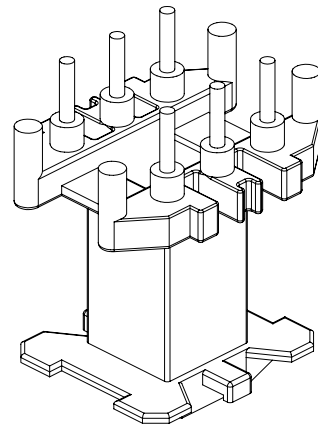
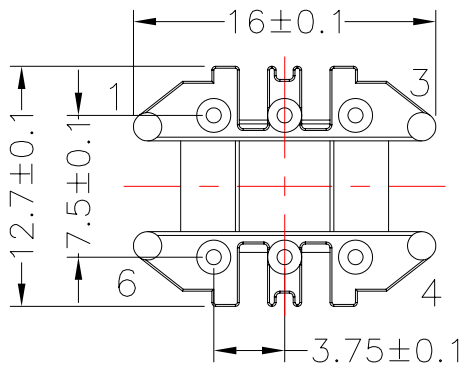
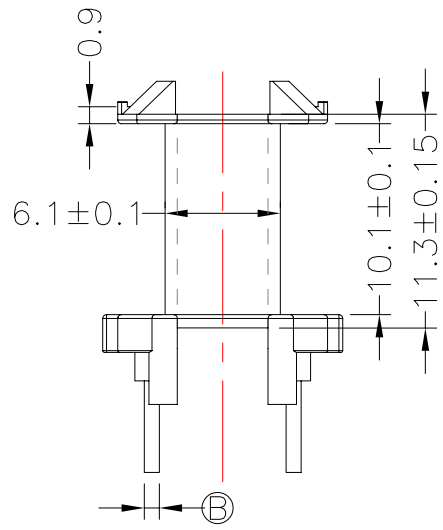
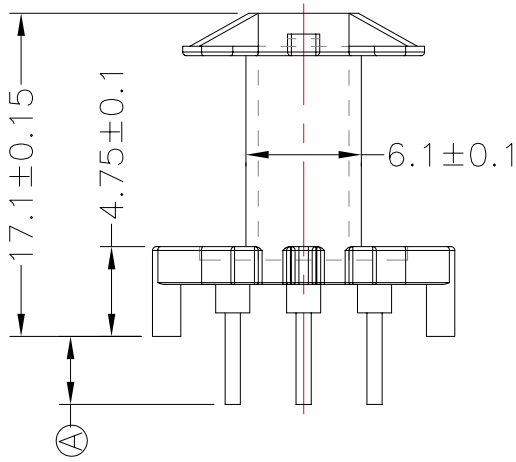
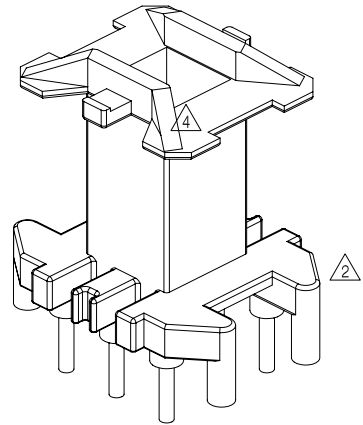
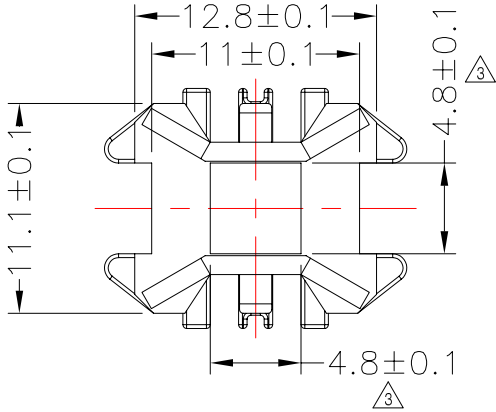




TRANSFORMER BOBBIN INDUSTRIAL CO.,LTD.

Tel : 86-769-88789999 Fax : 86-769-88789989
 http:// tbi-tw.com e-mail : tb6688@ms46.hinet.net

REVISIONS				
REV	SYM	DRAFTER	CHECKER	DATE
△2		S.Y.TANG	G.F.YANG	12/07/07
△3		S.Y.TANG	G.F.YANG	01/19/08
△4		S.Y.TANG	G.F.YANG	07/15/09



DWG NO.	EF16-6P-TH-3.75-A-11				
PART NO.	MATERIAL (BOBBIN)	MATERIAL (TERMINAL)	TERMINAL (PLATING)	PIN ALLOCATION	NOTE
TBI-205-02011.1106	PM-9630	C.P WIRE	Sn	ALL PIN(A)=3.6±0.3 (B)=Φ0.8±0.05	
TBI-205-02011.1116	PM-9630	C.P WIRE	Sn	CUT PIN # 2,5(A)=3.6±0.3 (B)=Φ0.8±0.05	
△3 TBI-205-02011.1126	PM-9630	C.P WIRE	Sn	CUT PIN # 1,5(A)=3.2±0.2 (B)=SQ 0.64±0.05	
△3 TBI-205-02011.1136	PM-9630	C.P WIRE	Sn	CUT PIN # 5(A)=3.2±0.2 (B)=SQ 0.64±0.05	

	TOLERANCE: .X±0.15 .XX±0.10 .XXX±0.05	UNIT : m / m	SCALE 2.5 : 1
--	---------------------------------------	--------------	---------------

Finish:	1.Pb wire Immersion Sn on terminal : Thickness:Sn plating,100,5 μm (200 μ inches) min,Base nickel 0.625 μm (25 μ inches) min. 2.CP wire Immersion Sn on terminal : Thickness:Sn plating,100,5 μm (200 μ inches) min. 3. Coplanarity deviation: 0.10 mm (0.004 inches) max.	REV 4
---------	--	-------