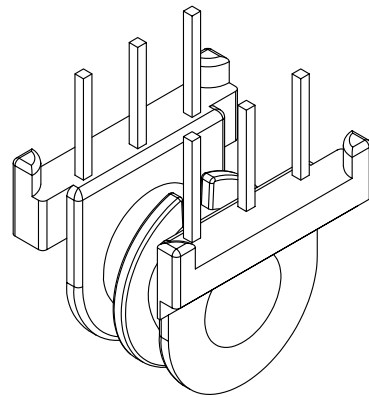
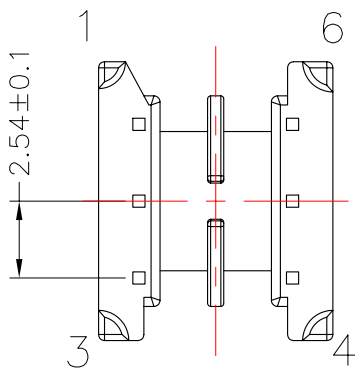
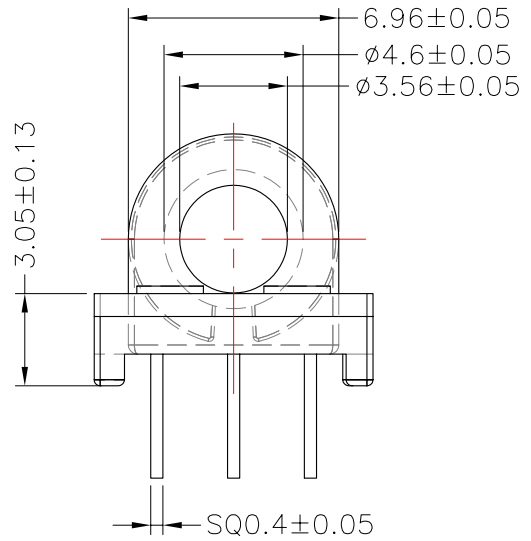
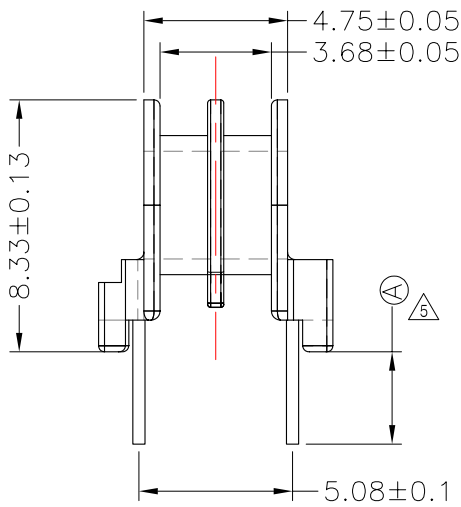
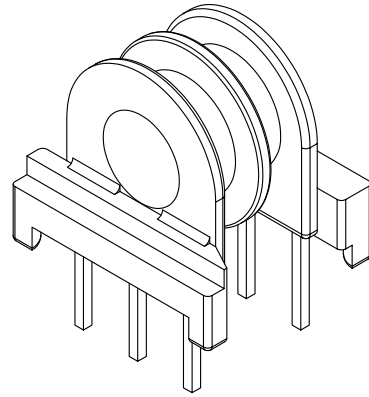
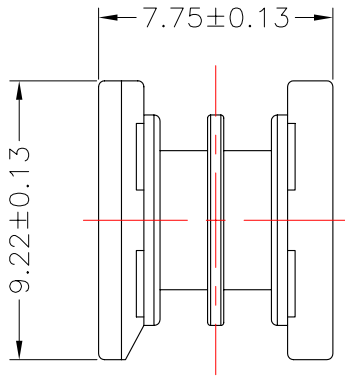




TRANSFORMER BOBBIN INDUSTRIAL CO.,LTD.

Tel : 86-769-88789999 Fax : 86-769-88789989
 http:// tbi-tw.com e-mail : tb6688@ms46.hinet.net

REVISIONS				
REV	SYM	DRAFTER	CHECKER	DATE
△5		S.Y.TANG	W.H.HSU	04/04/07
△6		S.Y.TANG	W.H.HSU	04/21/07
△7		S.Y.TANG	G.F.YANG	06/16/08



DWG NO.	EP7-6P-TH-2.54-B-1-2S				
PART NO.	MATERIAL (BOBBIN)	MATERIAL (TERMINAL)	TERMINAL (PLATING)	PIN ALLOCATION	NOTE
TBI-203-08022.106	PM-9630	C.P WIRE	Sn	ALL PIN (A)=3.05±0.3	
TBI-203-08022.116	PM-9630	C.P WIRE	Sn	CUT PIN#4 (A)=2.75±0.25	
△6 TBI-203-08022.126	PM-9630	C.P WIRE	Sn	CUT PIN#6 (A)=2.75±0.25	
△7 TBI-203-08022.136	PM-9630	C.P WIRE	Sn	CUT PIN#2,5 (A)=3.4±0.2	
△7 TBI-203-08022.146	PM-9630	C.P WIRE	Sn	CUT PIN#5 (A)=3.3±0.2	
	TOLERANCE: .X±0.15 .XX±0.10 .XXX±0.05			UNIT : m / m	SCALE 4 : 1
Finish:	1. Pb wire Immersion Sn on terminal : Thickness:Sn plating,100,5 μm (200 μ inches) min,Base nickel 0.625 μm (25 μ inches) min. 2. CP wire Immersion Sn on terminal : Thickness:Sn plating,100,5 μm (200 μ inches) min. 3. Coplanarity deviation: 0.10 mm (0.004 inches) max.				REV 7