

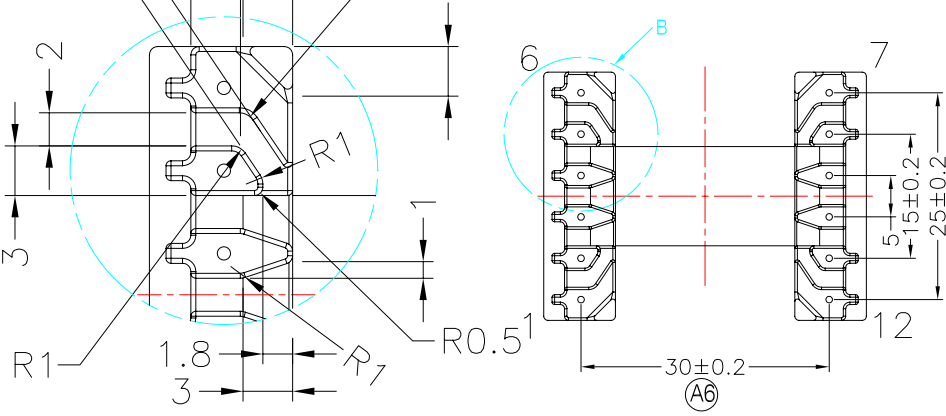
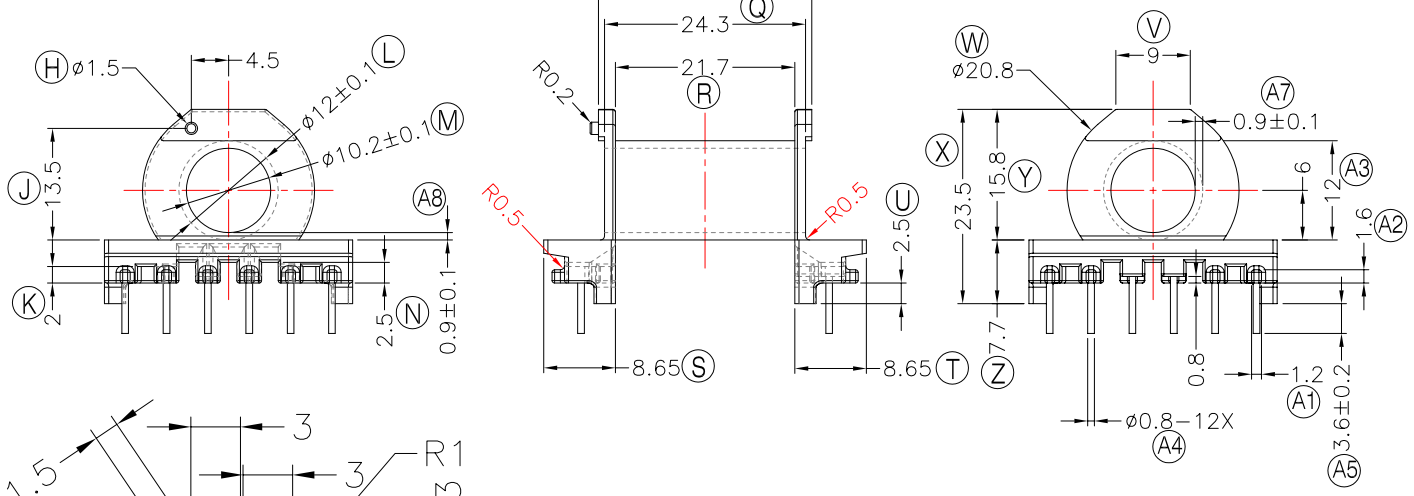
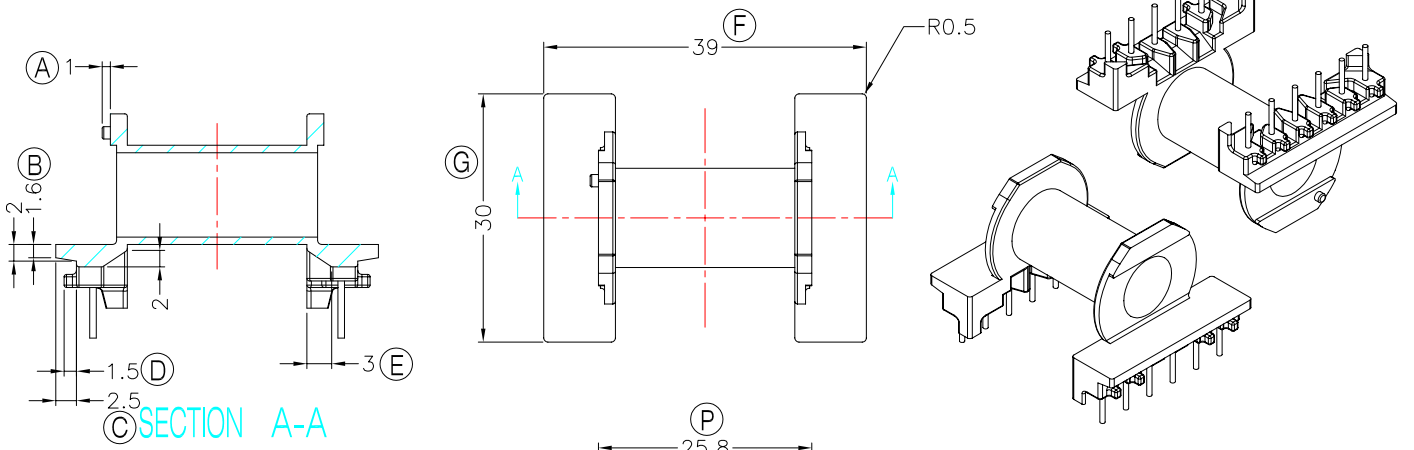


TRANSFORMER BOBBIN  
INDUSTRIAL CO.,LTD.

Tel : 86-769-88789999 Fax : 86-769-88789999  
http://tbi-tw.com e-mail : tb6688@ms46.hinet.net

REVISIONS

REV	SYM	DRAFTER	CHECKER	DATE
1		H.X.DUAN	G.F.YANG	05/28/10
2				
3				



- NOTE:
- 1:澆道切除(runner cutting) 時要注意不可有裂開,缺角情形
  - 2:澆口(Gate),EP等成型位置交由廠商決定
  - 3:模號刻印位置由廠商決定
  - 4:不可翹起,變形
  - 5:無指示脫模角為尺寸公差內
  - 6:無指示轉角為0.3mm
  - 7:各部份最低肉厚確保0.64mm以上
  - 8:端子拉拔力為25N以上

DETAIL B (2:1)

DWG NO.	ER2839-12P-TH-5.0-D-12				
PART NO.	MATERIAL (BOBBIN)	MATERIAL (TERMINAL)	TERMINAL (PLATING)	PIN ALLOCATION	NOTE
TBI-204-02041.1206	PM-9820	CP WIRE	Sn	ALL PIN	
TBI-204-02041.1216	PM-9820	CP WIRE	Sn	CUT PIN #4	H
TBI-204-02041.1226	PM-9820	CP WIRE	Sn	CUT PIN #3	
TBI-204-02041.1236	PM-9820	CP WIRE	Sn	CUT PIN #7	
	TOLERANCE: 0<L<=4:±0.1 4<L<=16:±0.15 16<L<=63:±0.2 63<L<=250:±0.3			UNIT : m / m	SCALE 1 : 1

Finish: 1. PB wire Immersion Sn on terminal : Thickness:Sn plating,100,5 μm (200 μ inches) min,Base nickel 0.625 μm (25 μ inches) min.  
2. CP wire Immersion Sn on terminal : Thickness:Sn plating,100,5 μm (200 μ inches) min.  
3. Coplanarity deviation: 0.10 mm (0.004 inches) max.

REV	1
-----	---