

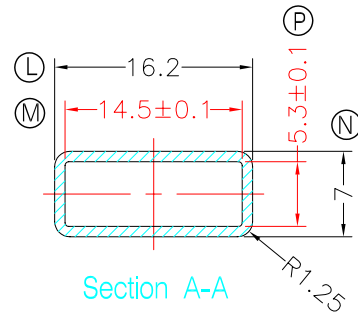
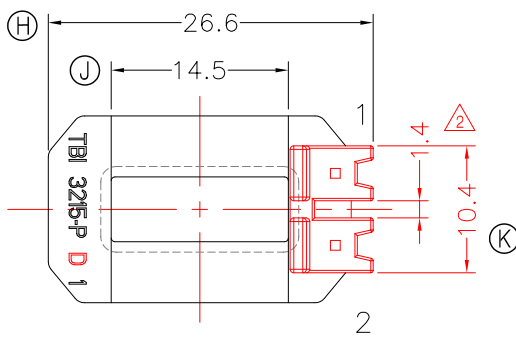
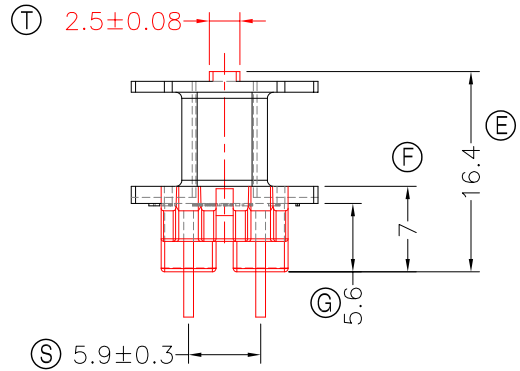
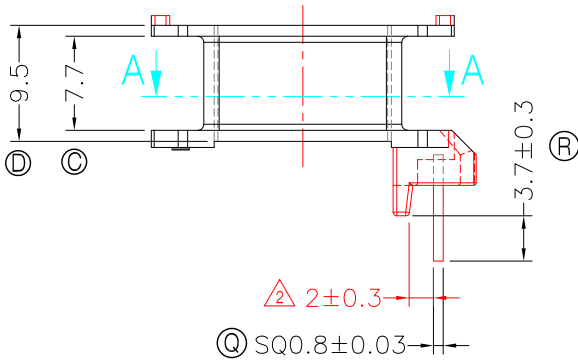
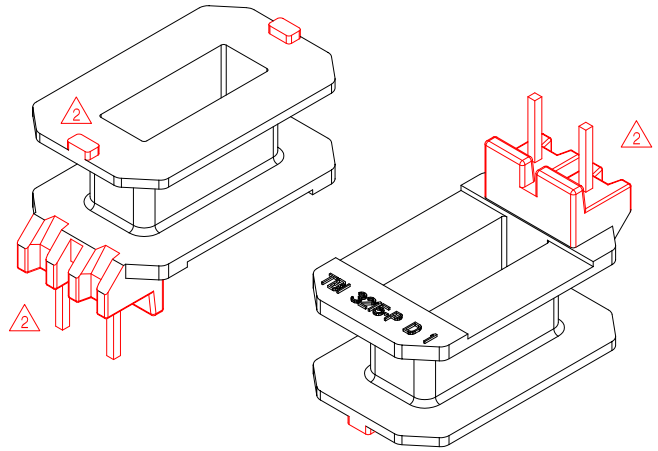
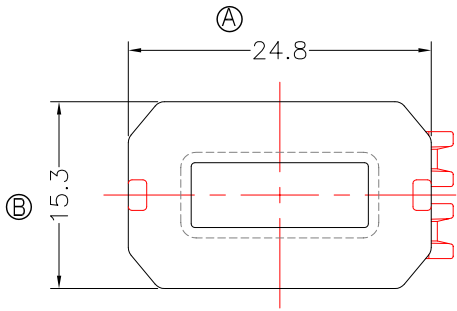


TRANSFORMER BOBBIN  
INDUSTRIAL CO.,LTD.

Tel : 86-769-88789999 Fax : 86-769-88789989  
http:// tbi-tw.com e-mail : tb6688@ms46.hinet.net

REVISIONS

REV	SYM	DRAFTER	CHECKER	DATE
1		F.LU	G.F.YANG	09/22/11
2		F.LU	G.F.YANG	10/08/11
3				



Section A-A

Notes:

- 1. Max permissible flash are 0.1mm.
  - 2. Max flash in winding area are 0.05mm.
- PIN TENSION LOAD: 1.0kg Min

DWG NO.	EE32-15D-2P-TH-5.9-B-12 $\triangle$				
PART NO.	MATERIAL (BOBBIN)	MATERIAL (TERMINAL)	TERMINAL (PLATING)	PIN ALLOCATION	NOTE
TBI-201-29021.1206	PM-9820	CP WIRE	Sn	ALL PIN	EE 3215 D 2PIN-P
					S
					H
TOLERANCES: ±0.2			UNIT : m / m	SCALE	1 : 1

Finish: 1. PB wire Immersion Sn on terminal : Thickness:Sn plating,100,5 μm (200 μ inches) min,Base nickel 0.625 μm (25 μ inches) min.  
2. CP wire Immersion Sn on terminal : Thickness:Sn plating,100,5 μm (200 μ inches) min.  
3. Coplanarity deviation: 0.10 mm (0.004 inches) max.

REV	2
-----	---