

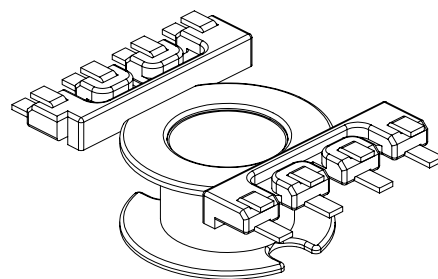
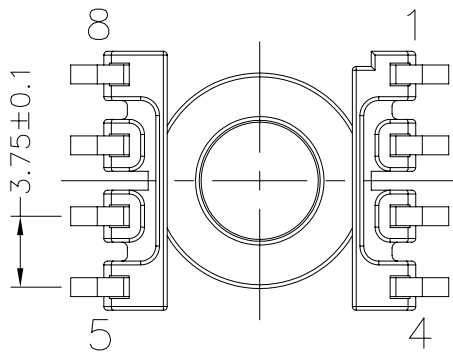
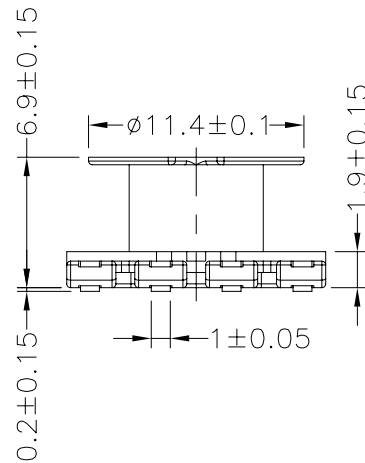
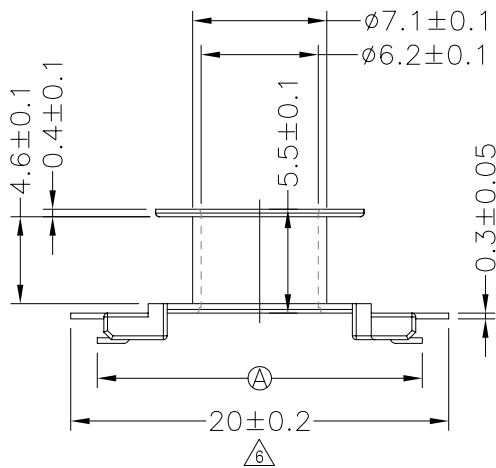
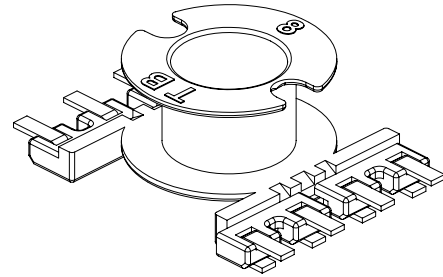
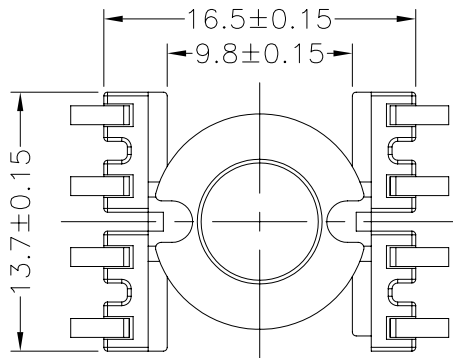


**TRANSFORMER BOBBIN INDUSTRIAL CO.,LTD.**

Tel : 86-769-88789999 Fax : 86-769-88789989  
 http:// tbi-tw.com e-mail : tb6688@ms46.hinet.net

REVISIONS

REV	SYM	DRAFTER	CHECKER	DATE
△5		T.S.LII	W.H.HSU	07/25/06
△6		S.Y.TANG	S.M.SHIH	11/09/06
△7		S.Y.TANG	G.F.YANG	03/05/08



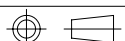
DWG NO. CUT14X8-8P-J-3.75-A-3

PART NO.	MATERIAL (BOBBIN)	MATERIAL (TERMINAL)	TERMINAL (PLATING)	PIN ALLOCATION	NOTE
----------	-------------------	---------------------	--------------------	----------------	------

TBI-110-01011.306	LCP	C.P WIRE	Sn	ALL PIN (A)=17.2±0.3	
-------------------	-----	----------	----	----------------------	--

△ TBI-110-01011.316	LCP	C.P WIRE	Sn	ALL PIN (A)=18.2±0.3	H
---------------------	-----	----------	----	----------------------	---

TBI-110-01011.326	LCP	C.P WIRE	Sn	CUT PIN#1 (A)=17.2±0.3	
-------------------	-----	----------	----	------------------------	--



TOLERANCE: .X±0.15 .XX±0.10 .XXX±0.05

UNIT : m / m

SCALE 2.5 : 1

Finish: 1. Pb wire Immersion Sn on terminal : Thickness:Sn plating,100,5 μ m (200 μ inches) min,Base nickel 0.625 μ m (25 μ inches) min.  
 2. CP wire Immersion Sn on terminal : Thickness:Sn plating,100,5 μ m (200 μ inches) min.  
 3. Coplanarity deviation: 0.10 mm (0.004 inches) max.

REV 7