

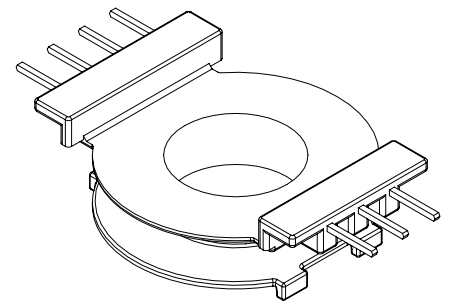
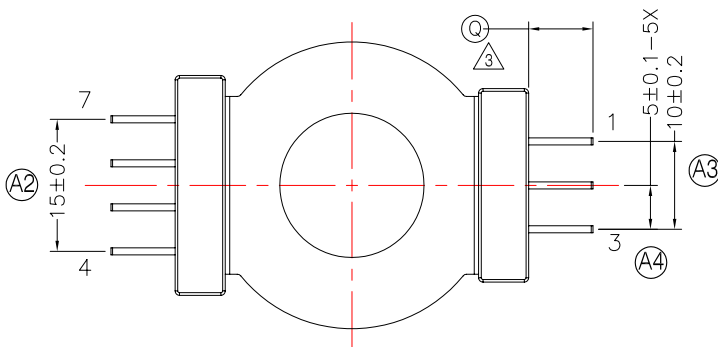
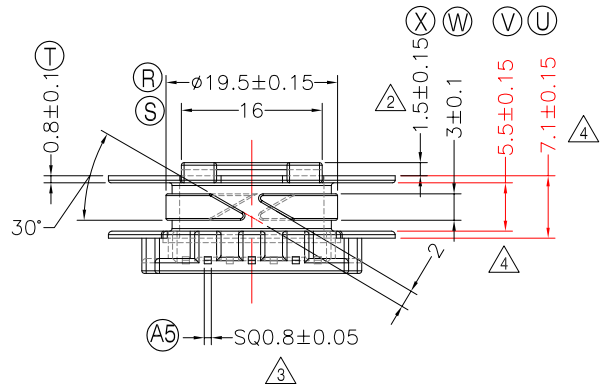
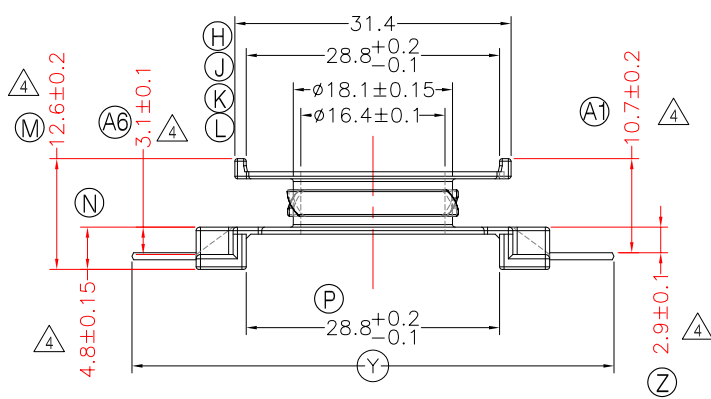
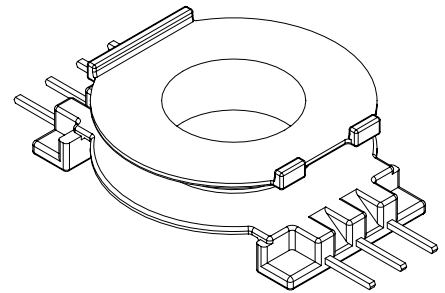
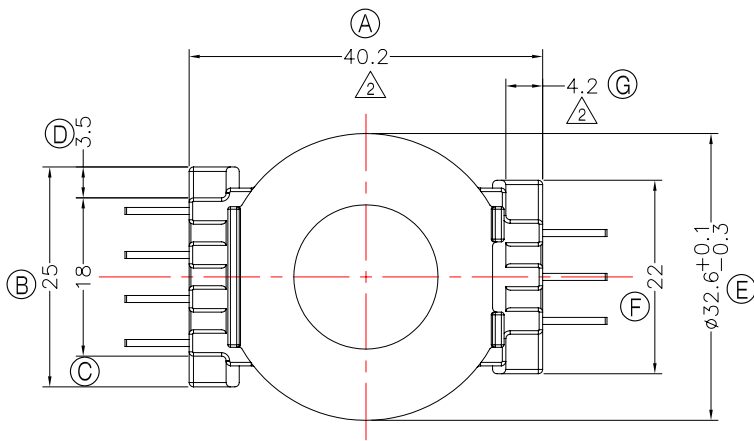


**TRANSFORMER BOBBIN  
INDUSTRIAL CO.,LTD.**

Tel : 86-769-88789999 Fax : 86-769-88789989  
http:// tbi-tw.com e-mail : tb6688@ms46.hinet.net

REVISIONS

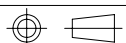
REV	SYM	DRAFTER	CHECKER	DATE
2		YAN.TANG	G.F.YANG	09/21/09
3		X.H.GU	G.F.YANG	10/06/09
4		X.H.GU	G.F.YANG	01/02/10



焊錫前拉力:1.5KG MIN  
焊錫後拉力:2.04KG MIN  
任意一點強度須1.5kg MIN;  
SMD PIN平整度(焊前<=0.1;焊後<=0.12)  
切斷面需100%上錫;

DWG NO. CC40-13.5A-7P-GW-5.0-0A-12

PART NO.	MATERIAL (BOBBIN)	MATERIAL (TERMINAL)	TERMINAL (PLATING)	PIN ALLOCATION	NOTE
TBI-139-01011.1206	PM-9820 $\triangle$	CP WIRE	Sn	ALL PIN $\odot$ =7.3±0.2 $\odot$ =54.8±0.3	S
TBI-139-01011.1216	PM-9820 $\triangle$	CP WIRE	Sn	ALL PIN $\odot$ =6.8±0.2 $\odot$ =53.8±0.3	H



TOLERANCE: 0<L<=4:±0.1 4<L<=16:±0.2 16<L<=63:±0.3

UNIT : m / m

SCALE 1 : 1

Finish: 1. PB wire Immersion Sn on terminal : Thickness:Sn plating,100,5  $\mu$ m (200  $\mu$  inches) min,Base nickel 0.625  $\mu$ m (25  $\mu$  inches) min.  
2. CP wire Immersion Sn on terminal : Thickness:Sn plating,100,5  $\mu$ m (200  $\mu$  inches) min.  
3. Coplanarity deviation: 0.10 mm (0.004 inches) max.

REV 4