

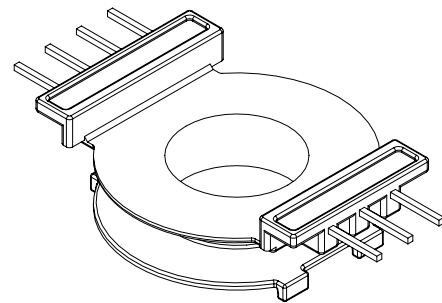
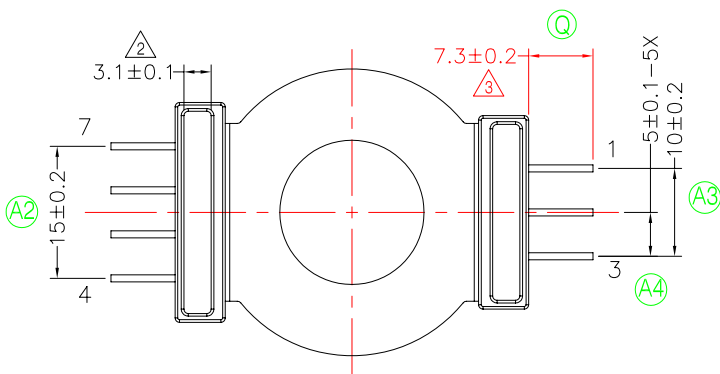
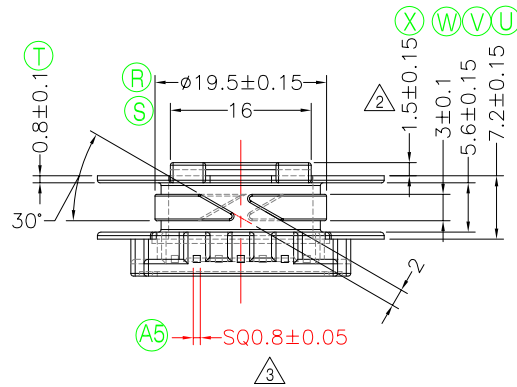
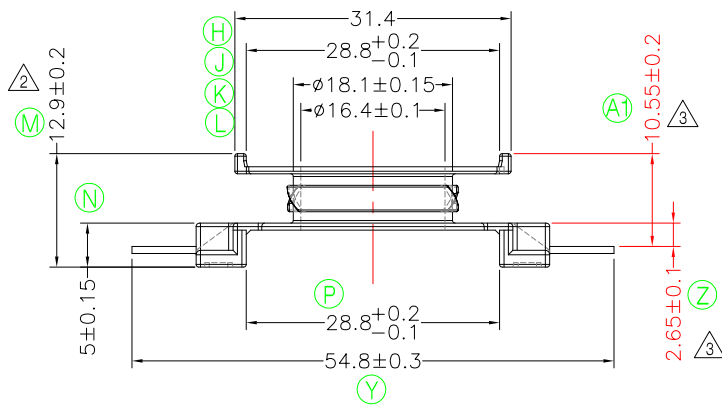
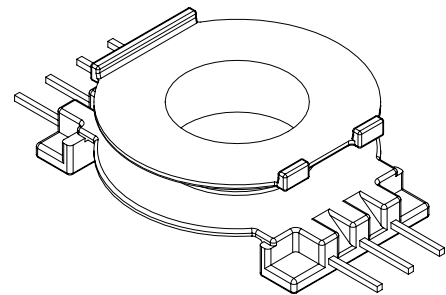
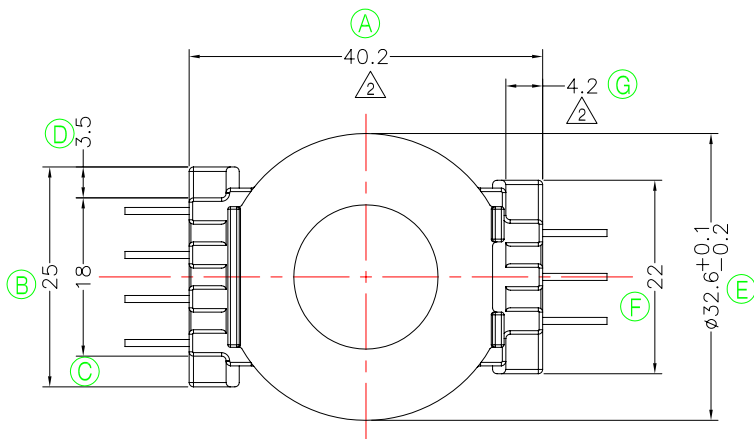


TRANSFORMER BOBBIN
INDUSTRIAL CO.,LTD.

Tel : 86-769-88789999 Fax : 86-769-88789989
http:// tbi-tw.com e-mail : tb6688@ms46.hinet.net

REVISIONS

REV	SYM	DRAFTER	CHECKER	DATE
1		YAN.TANG	G.F.YANG	07/16/09
2		YAN.TANG	G.F.YANG	09/21/09
3		X.H.GU	G.F.YANG	10/06/09



焊錫前拉力:1.5KG MIN
焊錫後拉力:2.04KG MIN
任意一點強度須3.0kg MIN;
SMD PIN平整度(焊前<=0.1;焊後<=0.12)

DWG NO. CC40-13.5A-7P-GW-5.0-0A-11

PART NO.	MATERIAL (BOBBIN)	MATERIAL (TERMINAL)	TERMINAL (PLATING)	PIN ALLOCATION	NOTE
TBI-139-01011.1106	PM-9630	CP WIRE	Sn	ALL PIN	

TOLERANCE: 0<L<=4:±0.1 4<L<=16:±0.2 16<L<=63:±0.3

UNIT : m / m

SCALE 1 : 1

Finish: 1. PB wire Immersion Sn on terminal : Thickness:Sn plating,100,5 μm (200 μ inches) min,Base nickel 0.625 μm (25 μ inches) min.
2. CP wire Immersion Sn on terminal : Thickness:Sn plating,100,5 μm (200 μ inches) min.
3. Coplanarity deviation: 0.10 mm (0.004 inches) max.

REV 3