

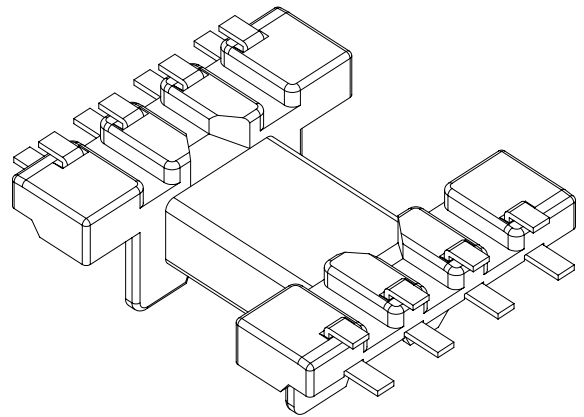
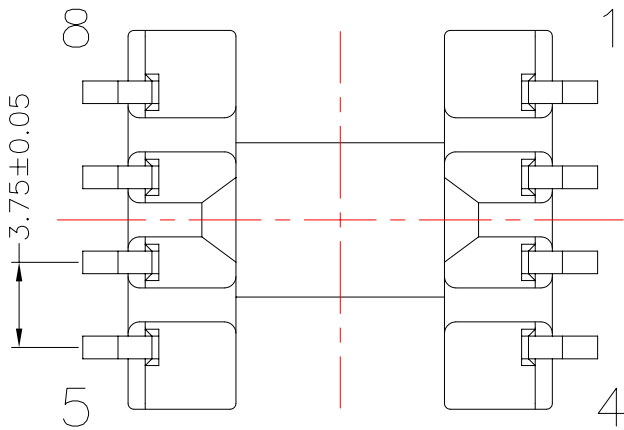
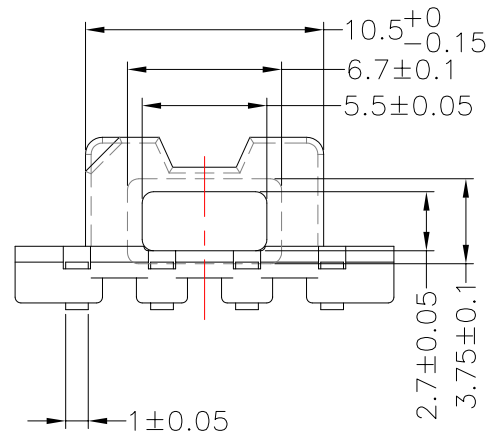
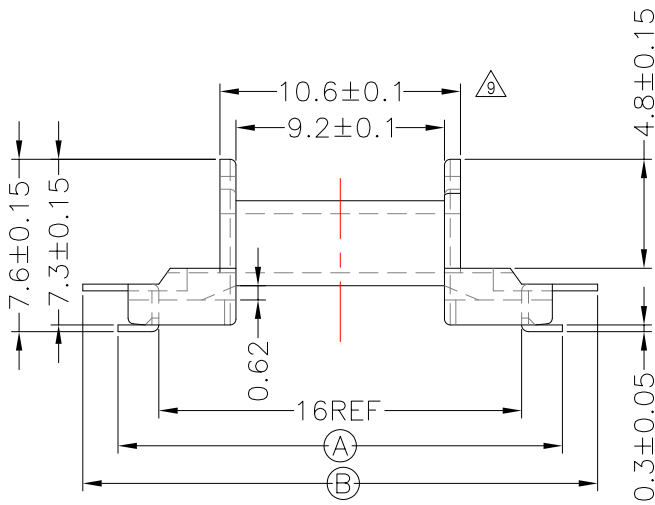
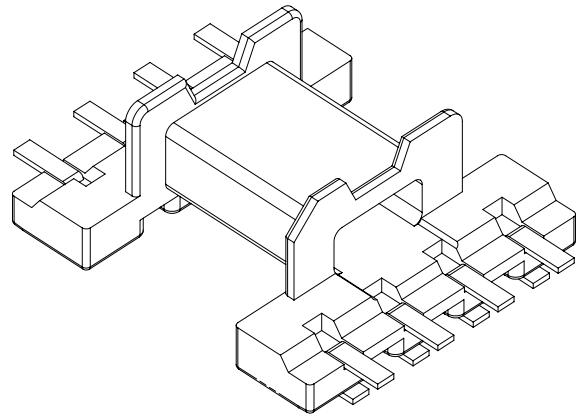
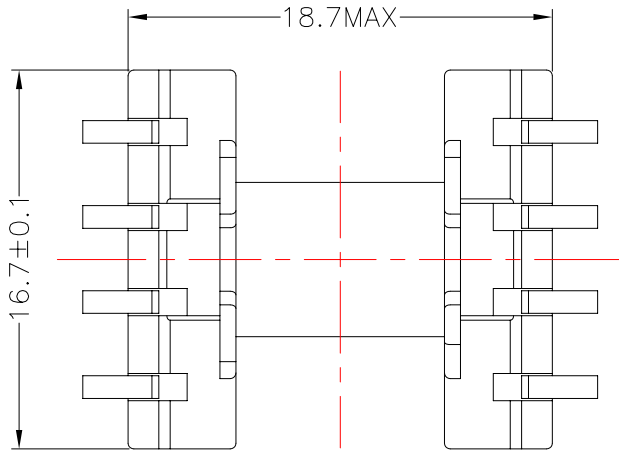


TRANSFORMER BOBBIN INDUSTRIAL CO.,LTD.

Tel : 86-769-88789999 Fax : 86-769-88789989
 http:// tbi-tw.com e-mail : tb6688@ms46.hinet.net

REVISIONS

REV	SYM	DRAFTER	CHECKER	DATE
7		T.S.LII	W.H.HSU	08/13/04
8		T.S.LII	W.H.HSU	07/25/06
9		YAN.TANG	S.M.SHIH	10/19/06



DWG NO. EFD15-8P-J-3.75-A-1

PART NO.	MATERIAL (BOBBIN)	MATERIAL (TERMINAL)	TERMINAL (PLATING)	PIN ALLOCATION	NOTE
TBI-107-03011.103	PM-9630JT	PB	Sn	ALL PIN (A)=19.6±0.2 (B)=22.7±0.2	
TBI-107-03011.113	PM-9630JT	PB	Sn	ALL PIN (A)=19.3±0.3 (B)=22.7±0.2	H
TBI-107-03011.123	PM-9630JT	PB	Sn	ALL PIN (A)=19.3±0.3 (B)=22.4±0.2	

TOLERANCE: .X±0.15 .XX±0.10 .XXX±0.05 UNIT : m / m SCALE 3 : 1

Finish: 1. PB wire Immersion Sn on terminal : Thickness:Sn plating,100,5 μm (200 μ inches) min,Base nickel 0.625 μm (25 μ inches) min.
 2. CP wire Immersion Sn on terminal : Thickness:Sn plating,100,5 μm (200 μ inches) min.
 3. Coplanarity deviation: 0.10 mm (0.004 inches) max.

REV 9