

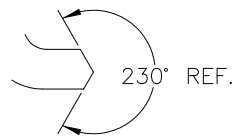
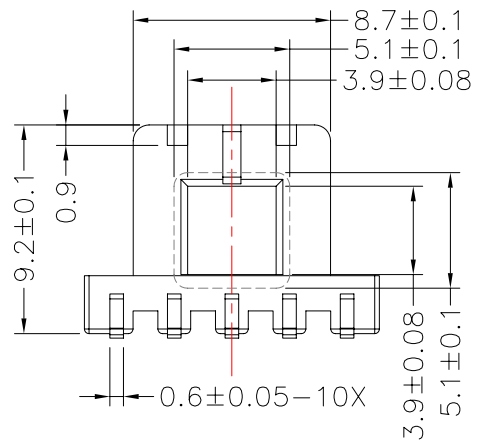
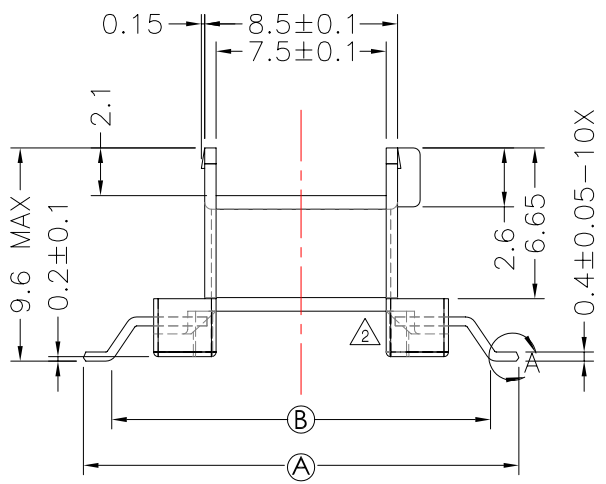
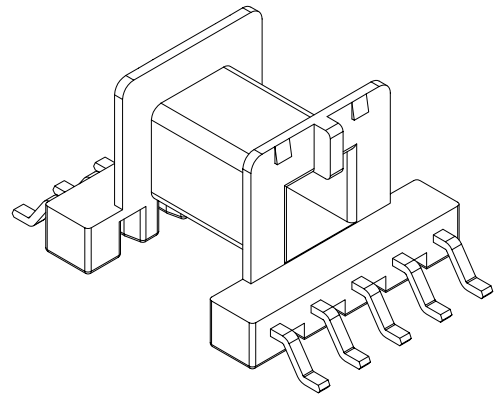
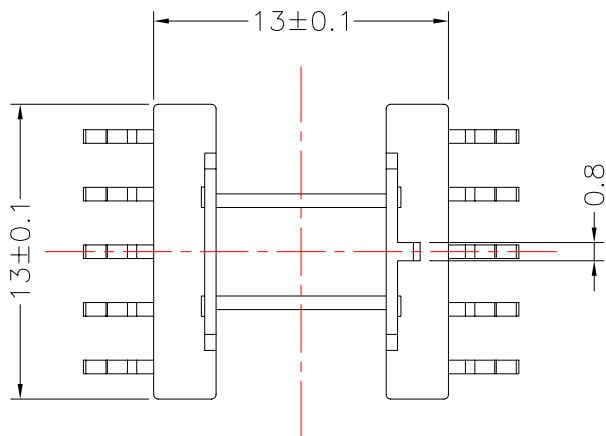


**TRANSFORMER BOBBIN INDUSTRIAL CO.,LTD.**

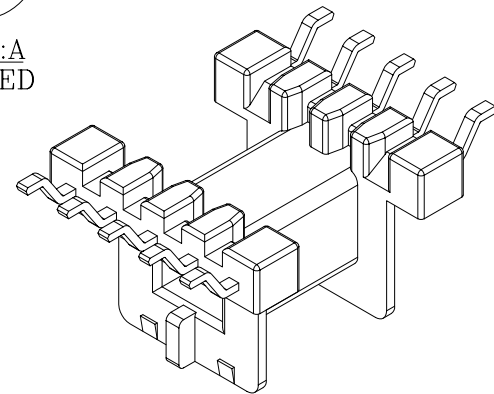
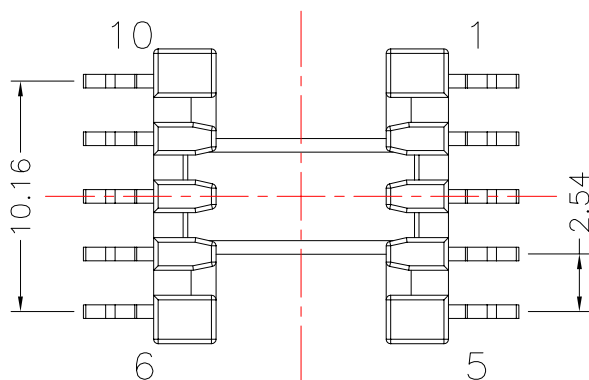
Tel : 86-769-88789999 Fax : 86-769-88789989  
http:// tbi-tw.com e-mail : tb6688@ms46.hinet.net

REVISIONS

REV	SYM	DRAFTER	CHECKER	DATE
①		S.Y.TANG	W.H.HSU	07/02/07
②		S.Y.TANG	G.F.YANG	11/15/07
③				

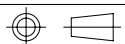


DETAIL:A  
PATENTED



DWG NO. EF12.6-10P-GW-2.54-G-3

PART NO.	MATERIAL (BOBBIN)	MATERIAL (TERMINAL)	TERMINAL (PLATING)	PIN ALLOCATION	NOTE
TBI-105-01071.303	LCP	P.B	Sn	ALL PIN; Ⓐ=19.2±0.2; Ⓑ=16.7 Ref.	
TBI-105-01071.313	LCP	P.B	Sn	ALL PIN; Ⓐ=17.2±0.2; Ⓑ=15.1 Ref.	



TOLERANCE: .X±0.15 .XX±0.10 .XXX±0.05

UNIT : m / m

SCALE 3 : 1

Finish: 1. Pb wire Immersion Sn on terminal : Thickness:Sn plating,100,5 μm (200 μ inches) min,Base nickel 0.625 μm (25 μ inches) min.  
2. CP wire Immersion Sn on terminal : Thickness:Sn plating,100,5 μm (200 μ inches) min.  
3. Coplanarity deviation: 0.10 mm (0.004 inches) max.

REV 2