

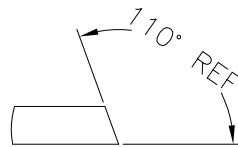
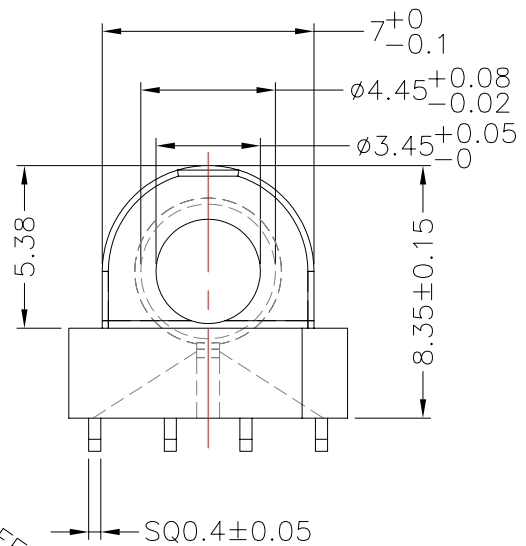
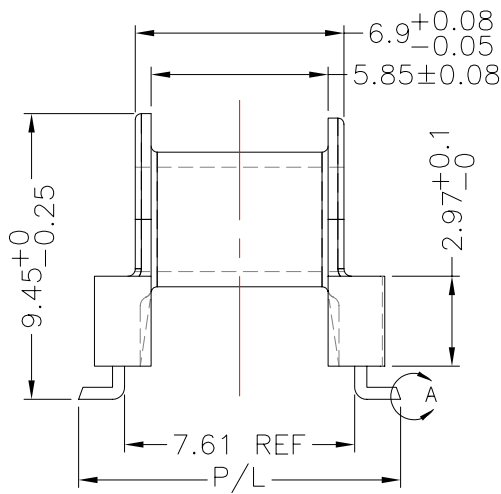
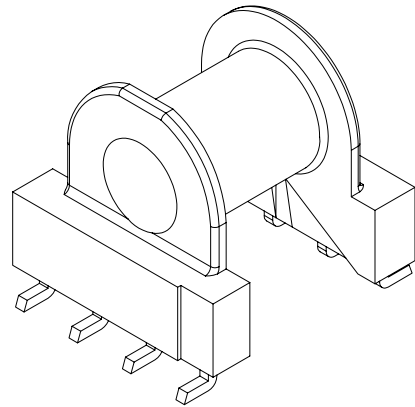
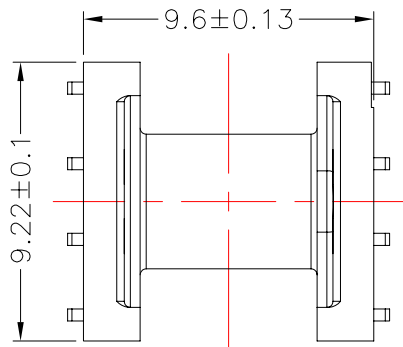


TRANSFORMER BOBBIN  
INDUSTRIAL CO.,LTD.

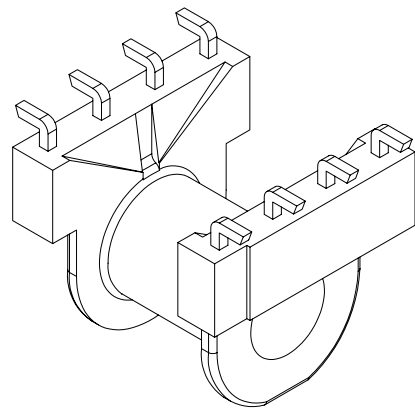
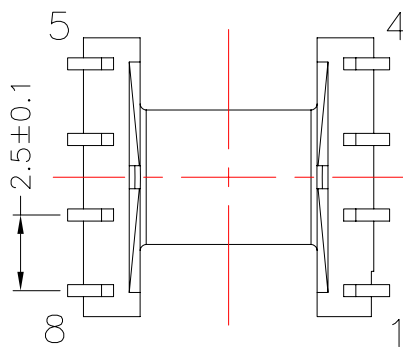
Tel : 86-769-88789999 Fax : 86-769-88789989  
http:// tbi-tw.com e-mail : tb6688@ms46.hinet.net

REVISIONS

REV	SYM	DRAFTER	CHECKER	DATE
1		YAN.TANG	W.H.HSU	10/19/07
2				
3				

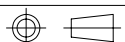


DETAIL:A  
PATENTED



DWG NO. EP7L-8P-L-2.5V-D3-1

PART NO.	MATERIAL (BOBBIN)	MATERIAL (TERMINAL)	TERMINAL (PLATING)	PIN ALLOCATION	NOTE
TBI-103-08431.103	PM-9630	PB	Sn	ALL PIN P/L=10.65±0.15	S
TBI-103-08431.113	PM-9630	PB	Sn	ALL PIN P/L=12.5±0.15	H
TBI-103-08431.123	PM-9630	PB	Sn	ALL PIN P/L=12±0.15	



TOLERANCE: .X±0.15 .XX±0.10 .XXX±0.05

UNIT : m / m

SCALE 4 : 1

Finish: 1. PB wire Immersion Sn on terminal : Thickness:Sn plating,100,5μm (200μinches) min.Base nickel 1-2.5μm (40-100μ inches) min.  
2. CP wire Immersion Sn on terminal : Thickness:Sn plating,100,5μm (200μinches) min.  
3. Coplanarity deviation: 0.10 mm (0.004 inches) max.  
4.Pin pull strenght = 1.0 kg (min) .

REV 1