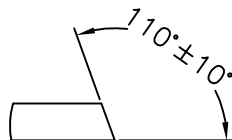
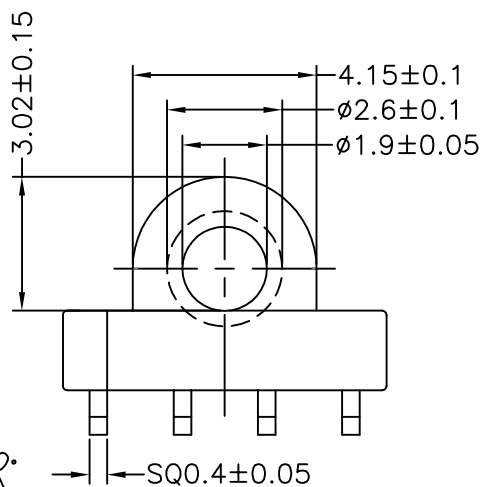
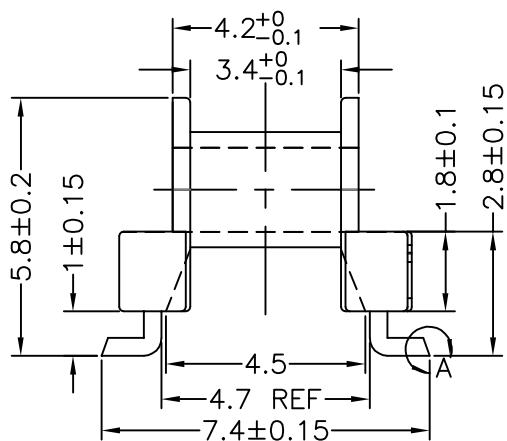
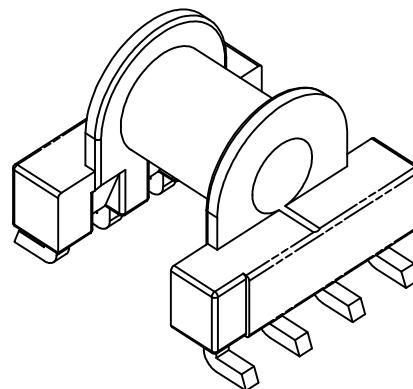
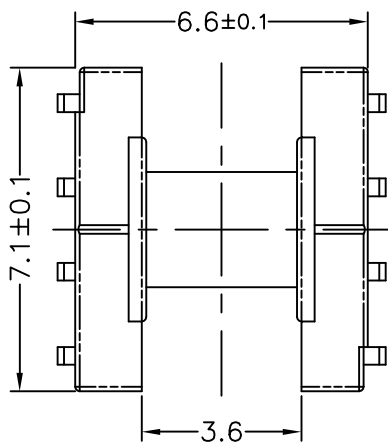


**TBI** TRANSFORMER BOBBIN INDUSTRIAL CO., LTD.

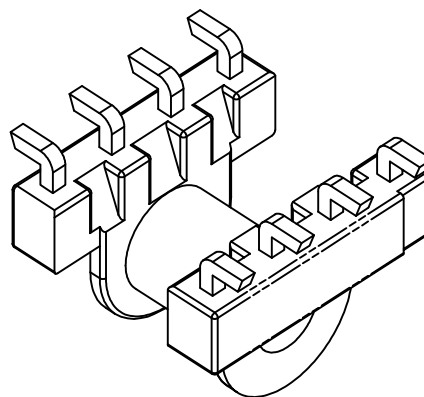
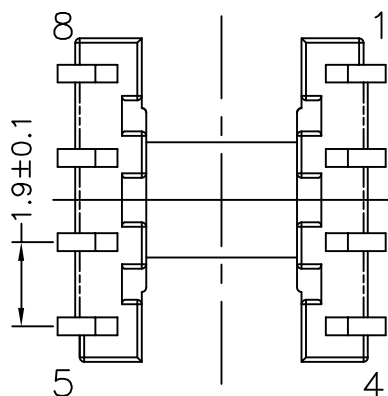
Phone 886-2-22929999 Fax 886-2-22925236  
E-MAIL: tb6688@ms46.hinet.net

REVISIONS

REV	SYM	DRAFTER	CHECKER	DATE
△		T.S.LII	W.H.HSU	02/03/04
△				
△				



DETAIL:A  
PATENTED  
△ 01/22/03



PART NO. EP6-8P-L-1.9-F-1

DWG NO. TBI-103-07061.1XX

TBI NO. MATERIAL (BOBBIN) MATERIAL (TERMINAL) TERMINAL (PLATING)

103-07061.103 PM-9630 P.B Sn

- Finish:
- 1-1. Immersion gold on terminal.  
Thickness gold 0.075  $\mu$ m (3  $\mu$  inches) min,  
Base nickel 0.625  $\mu$ m (25  $\mu$  inches) min.
  - 1-2. Immersion Sn on terminal.  
Terminal: Sn plating, 100, 5  $\mu$ m (200  $\mu$  inches) min  
Base nickel 0.625  $\mu$ m (25  $\mu$  inches) min.
  - 1-3. Immersion Sn/Pb on terminal.  
Terminal: Sn/Pb plating, 90/10, 5  $\mu$ m (200  $\mu$  inches) min  
Base nickel 0.625  $\mu$ m (25  $\mu$  inches) min. (for pin GW type)
  2. Coplanarity deviation: 0.004 inches max.

.103

ALL PIN

PART NO.

REV

MODE NO

PIN LOCATION

TOLERANCE

.X  $\pm$  0.15  
.XX  $\pm$  0.10  
.XXX  $\pm$  0.05

UNIT

m/m

SCALE

6 : 1

REV

1