

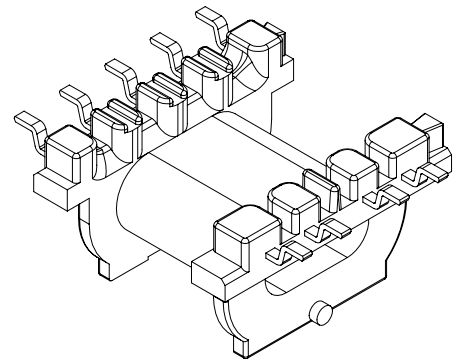
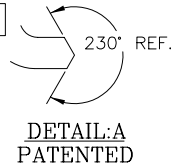
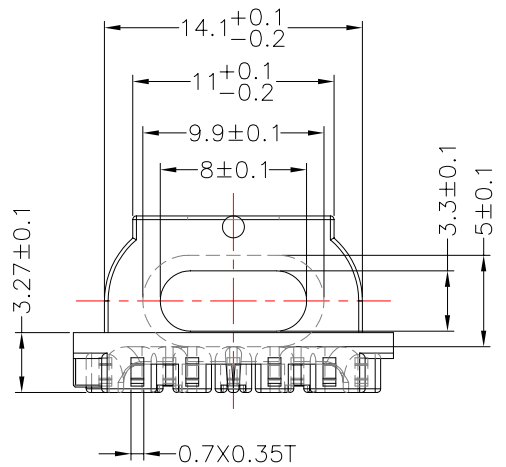
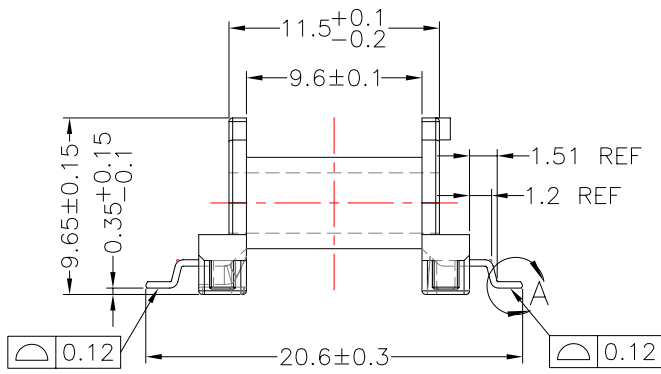
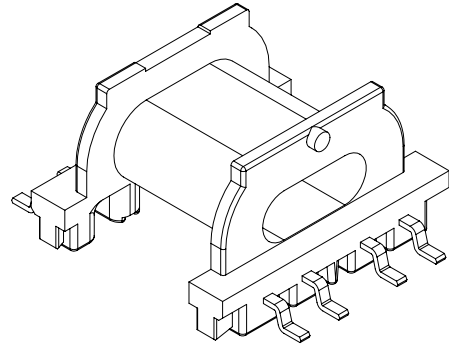
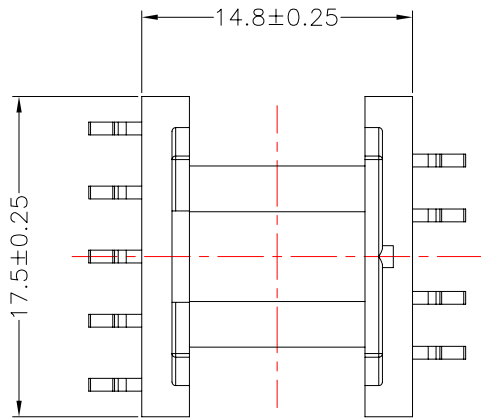


TRANSFORMER BOBBIN
INDUSTRIAL CO.,LTD.

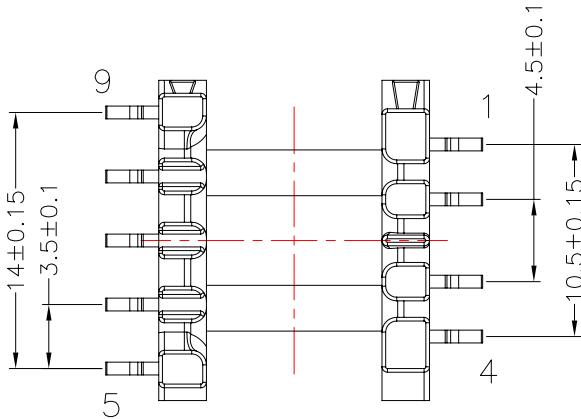
Tel : 86-769-88789999 Fax : 86-769-88789999
http:// tbi-tw.com e-mail : tb6688@ms46.hinet.net

REVISIONS

REV	SYM	DRAFTER	CHECKER	DATE
△1		H.X.DUAN	G.F.YANG	05/12/11
△2				
△3				



NOTE:
所有合模線位置有
0.05~0.08MM錯位與毛邊
拉力 1.0kg Min



DWG NO. EPC17-9P-GW-0F-11

PART NO.	MATERIAL (BOBBIN)	MATERIAL (TERMINAL)	TERMINAL (PLATING)	PIN ALLOCATION	NOTE
TBI-106-01061.1106	PM-9630	PB	Sn	ALL PIN	S
TBI-106-01061.1116	PM-9630	PB	Sn	CUT PIN #1,2,3,4	
TBI-106-01061.1126	PM-9630	PB	Sn	CUT PIN #5,6,7,8,9	

TOLERANCE: 0<L<=4:±0.1 4<L<=16:±0.2 16<L<=63:±0.3 UNIT : m / m SCALE 1 : 1

Finish: 1. PB wire Immersion Sn on terminal : Thickness:Sn plating,100,5 μm (200 μ inches) min,Base nickel 0.625 μm (25 μ inches) min.

2. CP wire Immersion Sn on terminal : Thickness:Sn plating,100,5 μm (200 μ inches) min.

3. Coplanarity deviation: 0.10 mm (0.004 inches) max.

REV 1