

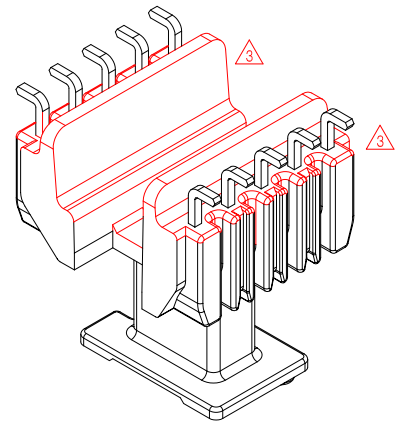
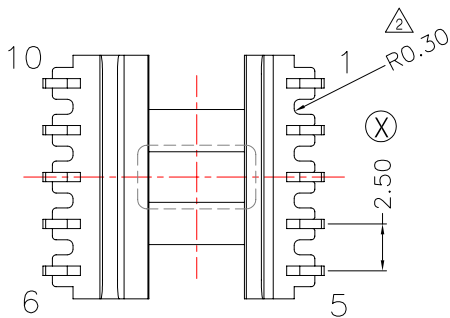
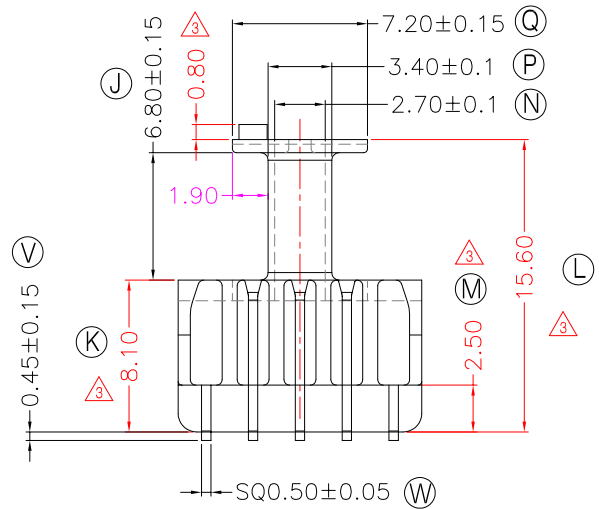
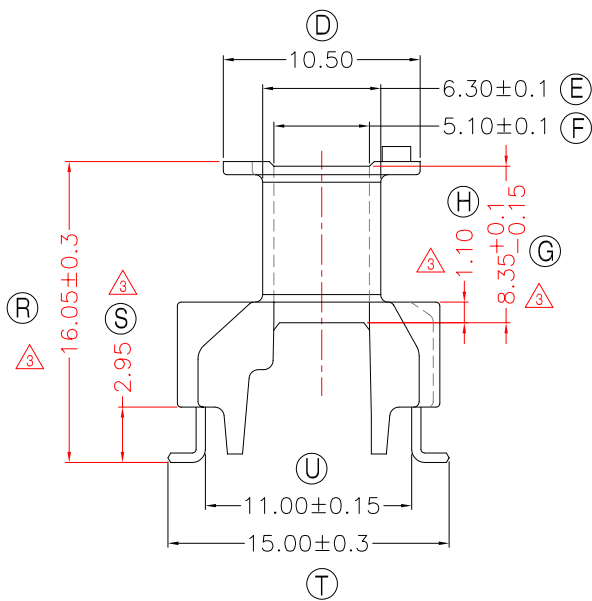
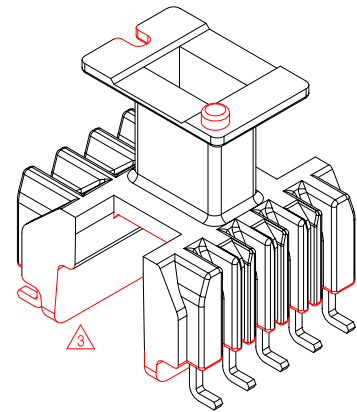
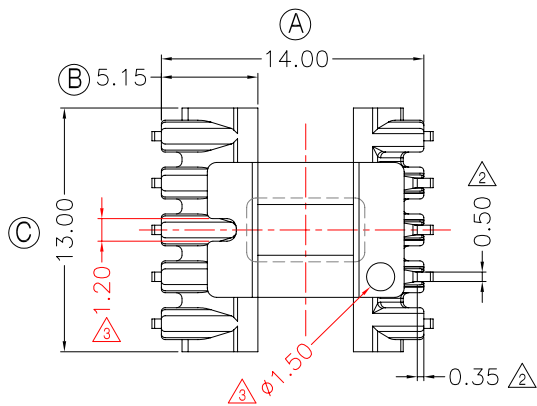


**TRANSFORMER BOBBIN
INDUSTRIAL CO.,LTD.**

Tel : 86-769-88789999 Fax : 86-769-88789989
 http:// tbi-tw.com e-mail : tb6688@ms46.hinet.net

REVISIONS

REV	SYM	DRAFTER	CHECKER	DATE
①		X.H.GU	G.F.YANG	08/23/12
②		X.H.GU	G.F.YANG	02/05/13
③		X.H.GU	G.F.YANG	05/20/13



DWG NO. EE10-11-10P-L-B-11

PART NO.	MATERIAL (BOBBIN)	MATERIAL (TERMINAL)	TERMINAL (PLATING)	PIN ALLOCATION	NOTE
TBI-101-15021.1103	PM-9630	PB	Sn	ALL PIN	S
TBI-101-15021.1113	PM-9630	PB	Sn	CUT PIN #6,8,9	H
TBI-101-15021.1123	PM-9630	PB	Sn	CUT PIN #6,7,10	
TBI-101-15021.1133	PM-9630	PB	Sn	CUT PIN #5,6	
TBI-101-15021.1143	PM-9630	PB	Sn	CUT PIN #6,9,10	
TBI-101-15021.1153	PM-9630	PB	Sn	CUT PIN #5,6,7	

TOLERANCE: 0<L<4:±0.1 4<L<16:±0.2 16<L<63:±0.3 UNIT : m / m SCALE 1 : 1

Finish: 1. PB wire Immersion Sn on terminal : Thickness:Sn plating,100,5 μm (200 μ inches) min,Base nickel 0.625 μm (25 μ inches) min.
 2. CP wire Immersion Sn on terminal : Thickness:Sn plating,100,5 μm (200 μ inches) min.
 3. Coplanarity deviation: 0.10 mm (0.004 inches) max.

REV 3