

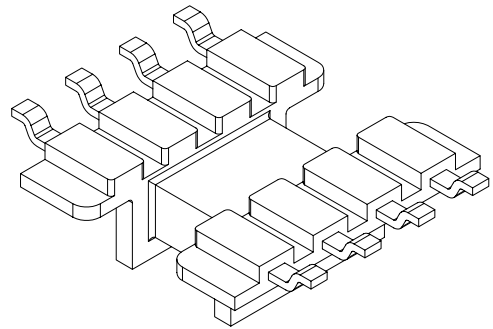
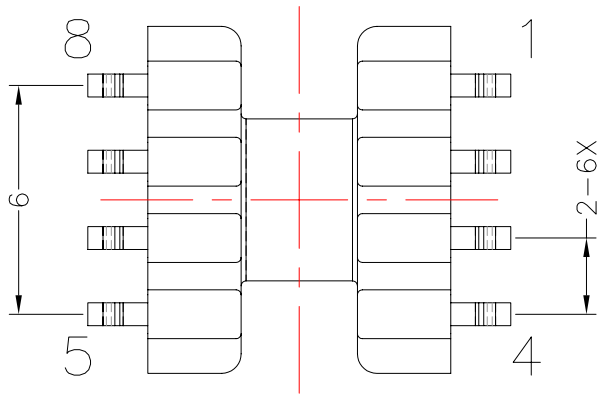
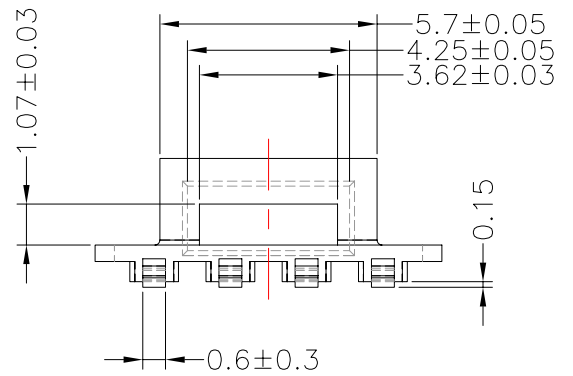
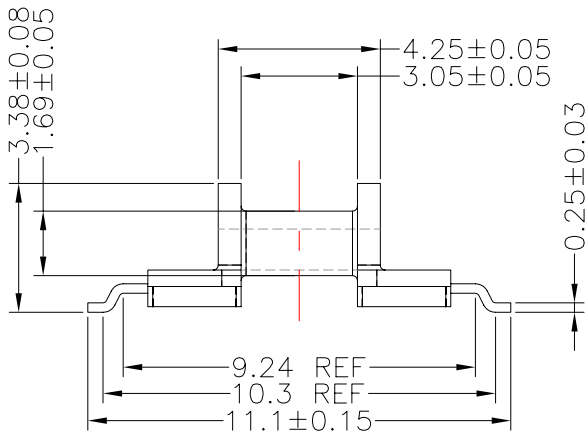
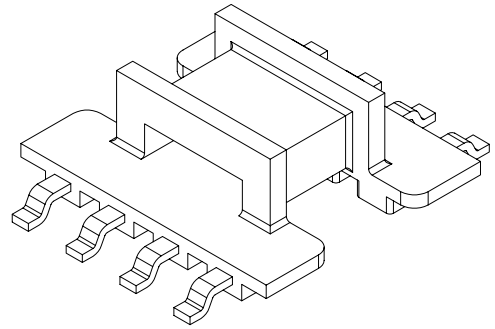
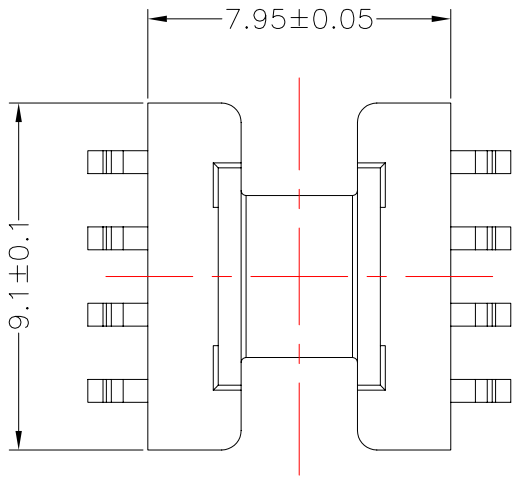


**TRANSFORMER BOBBIN
INDUSTRIAL CO.,LTD.**

Tel : 86-769-88789999 Fax : 86-769-88789989
 http:// tbi-tw.com e-mail : tb6688@ms46.hinet.net

REVISIONS

REV	SYM	DRAFTER	CHECKER	DATE
1		T.S.LII	W.H.HSU	06/30/06
2		T.S.LII	W.H.HSU	07/24/06
3		T.S.LII	W.H.HSU	04/02/07



DWG NO. EEM8.8-8P-GW-2-D-1

PART NO.	MATERIAL (BOBBIN)	MATERIAL (TERMINAL)	TERMINAL (PLATING)	PIN ALLOCATION	NOTE
TBI-101-03041.103	PM-9630	PB	Sn	ALL PIN	
TBI-101-03041.113	PM-9630	PB	Sn	CUT PIN #8	H
TBI-101-03041.123	PM-9630	PB	Sn	CUT PIN #6,8	

TBI-101-03041.103

PM-9630

PB

Sn

ALL PIN

TBI-101-03041.113

PM-9630

PB

Sn

CUT PIN #8

H

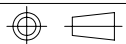
TBI-101-03041.123

PM-9630

PB

Sn

CUT PIN #6,8



TOLERANCE: .X±0.15 .XX±0.10 .XXX±0.05

UNIT : m / m

SCALE 5 : 1

Finish: 1. PB wire Immersion Sn on terminal : Thickness:Sn plating,100,5 μm (200 μ inches) min,Base nickel 0.625 μm (25 μ inches) min.
 2. CP wire Immersion Sn on terminal : Thickness:Sn plating,100,5 μm (200 μ inches) min.
 3. Coplanarity deviation: 0.10 mm (0.004 inches) max.

REV 3